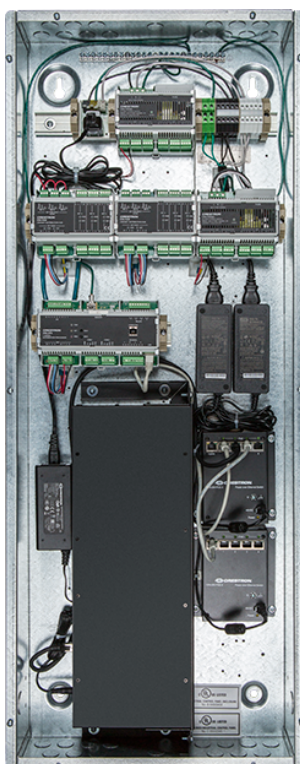


Zūm® Lighting Control Processor Panel, Expanded



Specifications

Power

Main Power 120VAC, 60 Hz

Environmental

Temperature 41° to 104° F (5° to 40° C)

Humidity 10% to 90% RH (non-condensing)

Dimensions

Height 39.63 in. (1007 mm)

Width 16.13 in. (409 mm)

Depth 4.44 in. (113 mm)

Model

ZUML-HUB4-CN-PAK

Zūm® Lighting Control Processor Panel, Expanded

Included Accessories

ZUM-HUB4

4-Series™ Control Processor for Zūm® Lighting Control System

PW-2420RU

Desktop Power Pack, 24VDC, 2.5A, 2.1 mm

DIN-EN-6X18

Enclosure for DIN Rail Devices, 6 DIN Rails, 18 M Wide

DIN-AP4

4-Series™ DIN Rail Control System

DIN-HUB

DIN Rail Cresnet Distribution Hub (x2)

DIN-PWS60

DIN Rail 60 Watt Cresnet® Power Supply (x2)

CEN-SW-POE-5

5-Port PoE Switch (x2)

Available Accessories

For a list of available accessories, visit the [ZUML-HUB4-CN-PAK](#) product page.

- Facilitates quick setup of a centrally managed Zūm light control system
- Convenient preassembled lighting control cabinet
- Contains a ZUM-HUB4 Zūm hub, PW-2420RU power pack, DIN-EN-6X18 wall mount enclosure, DIN-AP4 control processor, two CEN-SW-POE-5 switches, two DIN-HUB Cresnet hubs, and two DIN-PWS60 power supplies for the DIN-HUB

The Crestron® [ZUML-HUB4-CN-PAK](#) is a preassembled lighting control cabinet for use with a Crestron Zūm® lighting system. It contains a [ZUM-HUB4](#) Zūm hub, [PW-2420RU](#) power pack, [DIN-AP4](#) 4-series™ control processor, two [DIN-HUB](#) Cresnet® distribution hubs, two [DIN-PWS60](#) 60W Cresnet power supplies, and two [CEN-SW-POE-5](#) 5-port PoE switches, all mounted in a [DIN-EN-6X18](#) wall mount enclosure. It provides a convenient solution for commercial lighting applications that combine the Zūm platform with other Crestron systems and devices.

For additional details and specifications, refer to the [ZUM-HUB4](#), [PW-2420RU](#), [DIN-AP4](#), [DIN-HUB](#), [DIN-PWS60](#), [CEN-SW-POE-5](#), and [DIN-EN-6X18](#) product pages.

Zūm® Lighting Control Processor Panel, Expanded

This product may be purchased from select authorized Crestron dealers and distributors. To find a dealer or distributor, please contact the Crestron sales representative for your area. A list of sales representatives is available online at www.crestron.com/How-To-Buy/Find-a-Representative or by calling 855-263-8754.

This product is covered under the Crestron standard limited warranty. Refer to www.crestron.com/warranty for full details.

The specific patents that cover Crestron products are listed online at patents.crestron.com.

Certain Crestron products contain open source software. For specific information, please visit www.crestron.com/opensource.

Crestron, the Crestron logo, 4-Series, Cresnet, and Zūm are either trademarks or registered trademarks of Crestron Electronics, Inc. in the United States and/or other countries. Other trademarks, registered trademarks, and trade names may be used in this document to refer to either the entities claiming the marks and names or their products. Crestron disclaims any proprietary interest in the marks and names of others. Crestron is not responsible for errors in typography or photography.

Specifications are subject to change without notice.

©2021 Crestron Electronics, Inc.

Rev 10/18/21