

KB-RFUSB

Wireless Keyboard with Mousepad

The KB-RFUSB is a companion product of the ADMS Intermedia Delivery System™, the TPMC-8X touchpanel, and other touchpanels.

1 Check Contents

Package includes:

- Keyboard; White or Black
- USB Receiver
- 2- AAA Batteries
- Double-face tape for mounting the receiver
- Quickstart Guide (this guide)
- Compliance / Warranty document

USB RECEIVER



For detailed information about the keyboard's mouse and special function keys, refer to the latest version of the ADMS Installation & Operations Guide (Doc.6854) which is available from the Crestron website (www.crestron.com/manuals). If you are using the TPMC-8X or other touchpanel as a companion product, refer to the latest version of the guide for that product.

2 Insert Batteries

Open the battery compartment on the rear of the keyboard, observe the battery orientation embossed on the bottom of the compartment, and insert the two supplied AAA batteries.

3 Position Receiver

The receiver cable is approximately 5' (1.5 m) long. Place the receiver in a convenient location. Use the supplied double-faced tape to secure the receiver in position.

4 Connections/Pairing

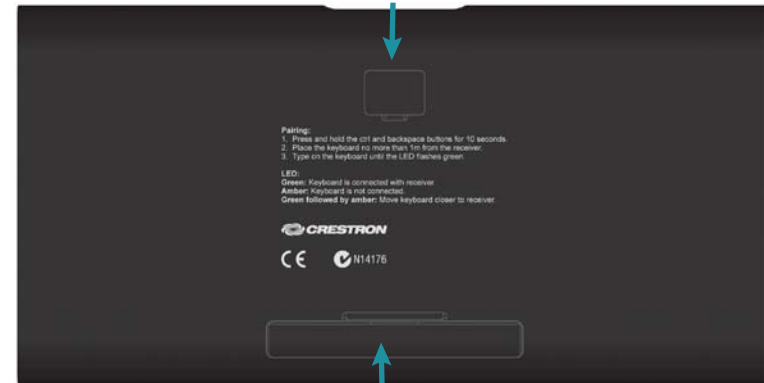
To connect the keyboard with the system, first plug the receiver's USB connector into your system, then pair the keyboard and receiver as follows:

1. Position the keyboard close to the receiver (within 40" (1m)).
2. Press and hold the **Ctrl** and **←** (backspace) keys for 10 seconds.
3. Type on the keyboard until the LED flashes green.
4. Once the system responds to keyboard commands, the keyboard may be used from other locations. Actual range for the keyboard will be determined by local conditions.

KB-RFUSB



(For factory use only)



Keyboard Hints

Right Click = Shift Left Click	
F1 = Fn + 1	- = Fn + p
etc.	{ = Fn + h
F10 = Fn + 0	[= Fn + j
F11 = EXIT] = Fn + k
F12 = MENU	} = Fn + l
` = Fn + q	\ = Fn + z
~ = Fn + w	= Fn + x
_ = Fn + o	

For Regulatory Compliance information, refer to the latest version of Doc. 6913.

QUICKSTART DOC. 6912A (2027120) 12.09

www.crestron.com
©2009 Specifications subject to change without notice.

888.273.7876 | 201.767.3400
All brand names, product names, and trademarks are the property of their respective owners.

