

# CSS-ARCH-MOTOR-SINGLE

## Architectural Motorized Shades, Single Roll

Versatile motorized shade series for ceiling, wall, or jamb mounting

Mounting hardware and brackets are modular in design

Curved or square fascias with matching end caps come in a variety of finishes

Universal mounting bracket is adjustable for flexible installation

**NOTE: "CSS-ARCH-MOTOR-SINGLE" is sold as part of a custom-configured product and orders are placed via the Crestron® Design Tool for Crestron Shading Solutions. This specifications page is for informational purposes and shows the available parts of an Architectural Motorized Shade, Single Roll. To configure shades or order shading parts and accessories, please use the Crestron Design Tool for Crestron Shading Solutions or call 1-855-53-S-H-A-D-E (537-4233) for support.**

Designed for use in situations where concealing the roller shade is desirable, an Architectural Motorized Shade offers design and installation options that make it one of the most versatile and commonly utilized shade types in Crestron® shading solutions.

A QMT™ motor fits inside the roller shade tubing, quietly and precisely controlling the movement of the shade. Each QMT motor features either Cresnet® or inINET EX® technology for communication, making it possible to integrate into a Crestron control system.

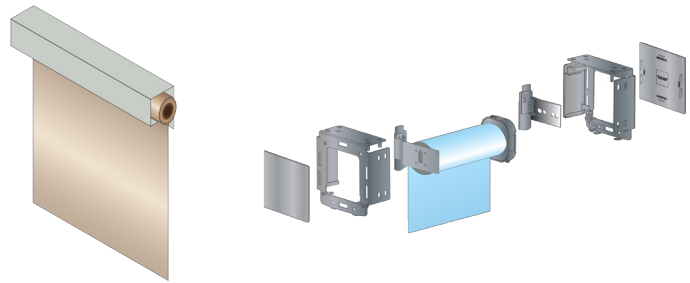
### Brackets & Coupler

Architectural mounting brackets come in a pair and can be adjusted in three dimensions for unique on-site applications: left to right, up and down, front and back. The brackets can be used for a single roller in an inside, outside, coupled, or pocket mount application. They have mounting considerations for ceiling, wall, or jamb and can include decorative fascia to hide the bracket when surface mounted. An Architectural coupler can be used to link up to 6 shades on one QMT motor.

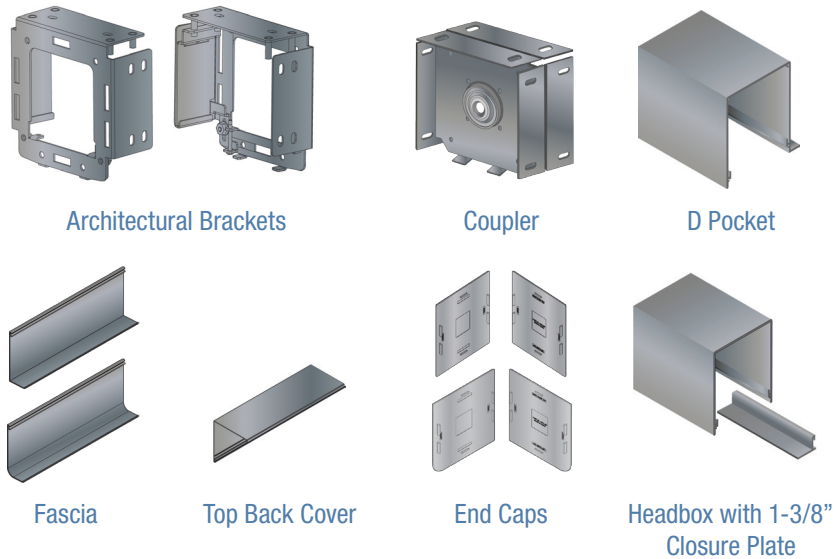
### Fascia & Top Back Cover

The Architectural fascia can be square or curved and fits on

## ARCHITECTURAL MOTORIZED SHADE, SINGLE ROLL



## MOUNTING HARDWARE & ACCESSORIES



## SPECIFICATIONS

ITEM	HEIGHT	WIDTH	LENGTH	FINISH
<b>Architectural Brackets</b>	4 1/2" (114 mm)	4 1/2" (114 mm)	1 5/8" (42 mm)	Metal; White, Ivory, Clear Anodized, Black, Bronze
<b>Coupler</b>	4 1/2" (114 mm)	4 1/2" (114 mm)	1 5/8" (42 mm)	Metal
<b>Square Fascia</b>	4 1/2" (114 mm)	1 5/8" (42 mm)	Maximum 192" (4877 mm)	Metal; White, Ivory, Clear Anodized, Black, Bronze
<b>Curved Fascia</b>	4 1/2" (114 mm)	1 5/8" (42 mm)	Maximum 192" (4877 mm)	Metal; White, Ivory, Clear Anodized, Black, Bronze
<b>Square/Curved End Caps</b>	Designed to match fascia and fit with architectural bracket			Plastic; White, Ivory, Clear Anodized, Black, Bronze
<b>Top Back Cover</b>	4 11/16" (119 mm)	4 1/2" (114 mm)	Maximum 192" (4877 mm)	Metal; White, Ivory, Clear Anodized, Black, Bronze
<b>Headbox w/ 1-3/8" Closure Plate</b>	4 11/16" (119 mm) headbox 1/2" (13 mm) closure plate	4 11/16" (119 mm) headbox 1 3/8" (35 mm) closure plate	Maximum 192" (4877 mm)	Metal; White, Ivory, Clear Anodized, Black, Bronze
<b>Headbox Caps</b>	Designed to match headbox and fit with architectural bracket			Plastic; White, Ivory, Clear Anodized, Black, Bronze
<b>D Pocket</b>	5 3/8" (137 mm)	5" (127 mm)	Maximum 144" (3658 mm)	Metal; White
<b>D Pocket Caps</b>	Screws directly into corresponding holes on D pocket			Metal; White

NOTE: Actual maximum shade size is dependent on fabric chosen.

# CSS-ARCH-MOTOR-SINGLE Architectural Motorized Shades, Single Roll

the Architectural bracket. It both camouflages the roller shade and allows access for adjustment and maintenance. The top and bottom of the fascia are tensioned fit and snap tightly into place. A top back cover is available with the fascia as part of a two-piece assembly and is suitable for surface mounting to a header, jamb, or wall. End caps are curved or square to match the fascia design and fit on the Architectural bracket.

The stock length for fascia is 192". They can be ordered individually and specified to certain lengths, but are also cut to match shade size when ordered as an accessory.

**NOTE:** If fascia is ordered as part of a window, end caps must be installed with housing to ensure fascia fits properly. Otherwise, a gap in the fascia will be present. The end caps come automatically in order with fascia, but may not be used during an inside mount.

## Headbox

Intended for a header or ceiling surface mount application, this extrusion consists of a front, top, and back cover to help conceal the shade assembly from view. It is not intended for a direct wall mount application. The housing does not include a tile lip for acoustical ceiling tile integration (see D pocket for this application type).

When configured as part of a shade, the headbox automatically comes with a 1-3/8" closure plate, which helps to conceal the underside of the roller shade when surface mounted. If the headbox is ordered as an accessory, the closure plate does not automatically come with it and must be ordered as an accessory if needed.

The headbox accommodates both standard and reverse roll shades. To achieve this, simply install the headbox so that the position of the closure plate allows the shade fabric to move freely. The closure plate is designed to install on only one side of the headbox, so it's important to make sure the headbox is facing the correct direction before mounting.

## D Pocket

The 5" D pocket is intended for recessed mounting applications and comes in a white finish only. All D pockets currently come with a tile lip to support an acoustical ceiling tile. D pockets may use 1.5" or 3" closure plates, which are sold separately. (5" closure plates are not appropriate for D pockets.) The closure plates are universal mounting and can be mounted to the front or back of the D pocket for either standard roll or reverse roll applications. D pockets are suitable to be mounted to the ceiling, not a direct wall application.

## AVAILABLE MODELS

CSA-BRKT-ARCH-FR-LG: Architectural Bracket, 2  
CSA-FASCIA-SQR: Square Fascia  
CSA-FASCIA-SQR-LG-EC: Square Fascia End Caps, 2  
CSA-FASCIA-CRV: Curved Fascia  
CSA-FASCIA-RAD-LG-EC: Curved Fascia End Caps, 2  
CSA-FASCIA-TBC: Top Back Cover  
CSA-HB-LG: Headbox  
CSA-HB-LG-EC: Headbox Caps, 2  
CSA-HB-COVER-FRONT: Headbox Closure Plate 1 3/8"  
CSA-CHNL-POCKET-W: D Pocket Channel  
CSA-CHNL-POCKET-EC-WHT: D Pocket Caps  
Architectural Coupler

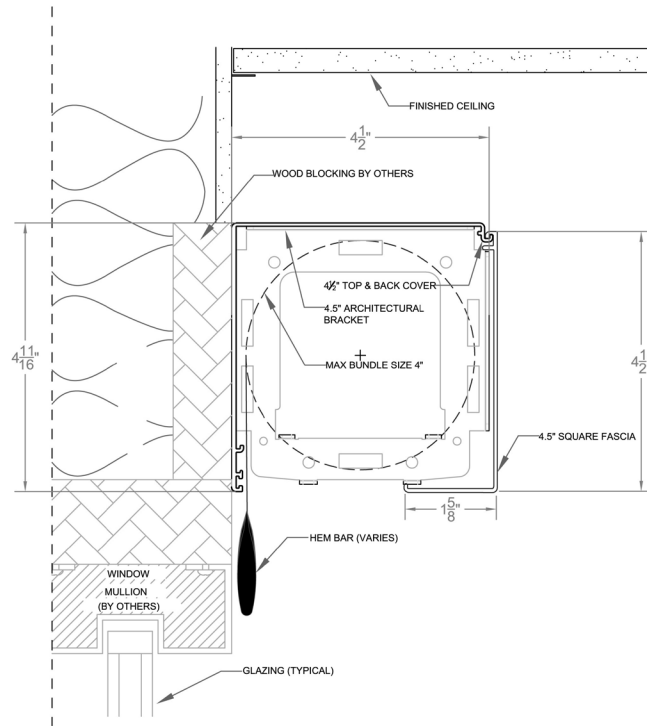
Notes: The specific patents that cover Crestron products are listed online at: [patents.crestron.com](http://patents.crestron.com).

Crestron, the Crestron Logo, Cresnet, infiNET EX, and Quiet Motor Technology (QMT) are either trademarks or registered trademarks of Crestron Electronics, Inc. in the United States and/or other countries. Other trademarks, registered trademarks, and trade names may be used in this document to refer to either the entities claiming the marks and names or their products. Crestron disclaims proprietary interest in the marks and names of others. Crestron is not responsible for errors in typography or photography. Specifications are subject to change without notice. ©2014 Crestron Electronics, Inc.

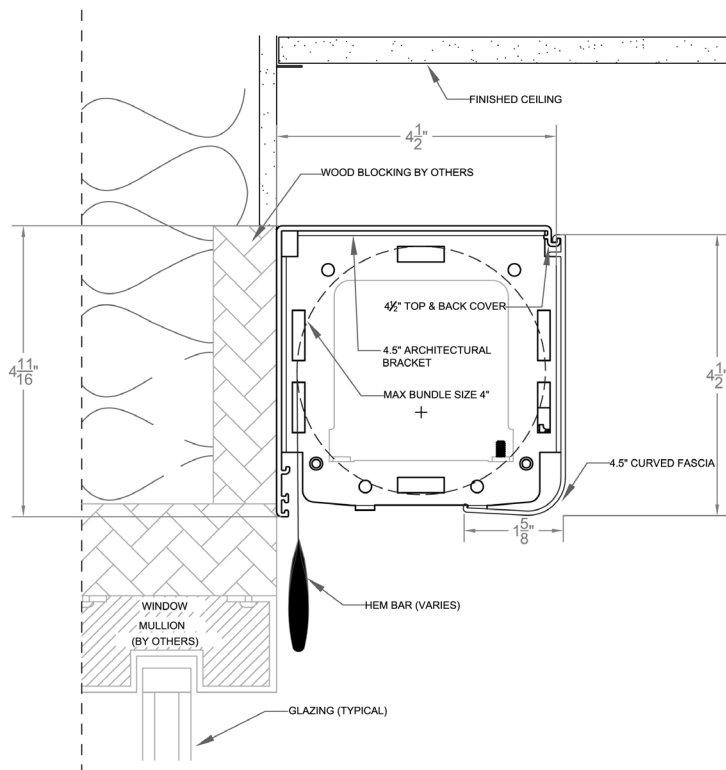
# CSS-ARCH-MOTOR-SINGLE Architectural Motorized Shades, Single Roll

## MOUNTING CONDITIONS

### Square Fascia with Top Back Cover



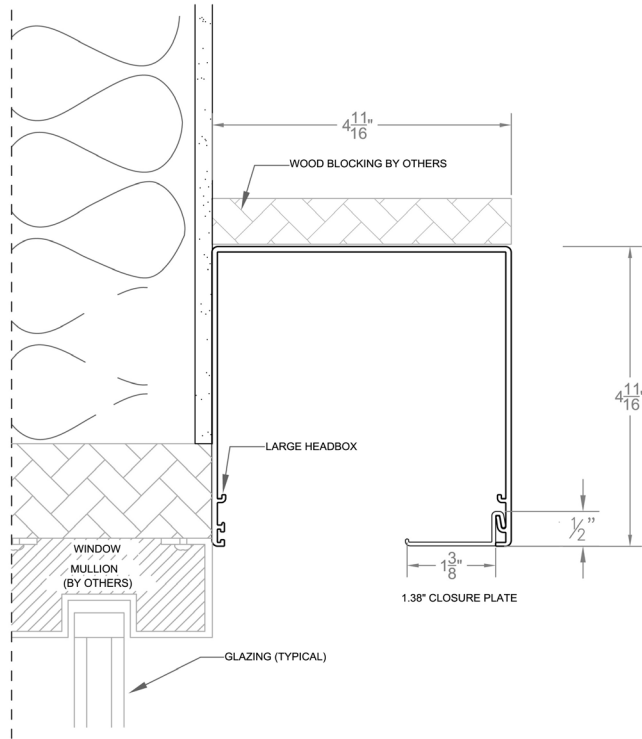
### Curved Fascia with Top Back Cover



# CSS-ARCH-MOTOR-SINGLE Architectural Motorized Shades, Single Roll

## MOUNTING CONDITIONS

### Headbox with 1 3/8" Closure Plate



### D Pocket with 3" Closure Plate

