

CCS-UC-200 KIT

Crestron RL® 2 Integrator Kit

Crestron RL® 2 advanced group-collaboration solution for conference rooms and huddle spaces combines Crestron® hardware with Microsoft® Skype® for Business software. Skype for Business offers an enterprise-ready unified communications platform capable of delivering presence, instant messaging, voice, and video across the network or Internet using computers and mobile devices. Crestron RL 2 extends the Skype for Business experience to the conference room so that groups can communicate and collaborate in real time from multiple locations. Crestron RL 2 combines the intuitive room control solutions of Crestron with the unified communication and collaboration features of Skype for Business.

1 Preparation

Verify Contents

Before starting the installation, check the system's package contents. Included items are listed in the following table. Retain all documents and parts supplied for the installation process.

DESCRIPTION	PART NUMBER	QTY
CODEC	CCS-UC-CODEC-200	1
TOUCH SCREEN, COLOR, 10"	TS-1051-C-B-S	1
RACK MOUNT KIT	CCS-BRKT-200-RMK	1
UNDER TABLE KIT	CCS-BRKT-200-UTK	1

Tools Required

A #1 or #2 Phillips screwdriver is required for installation.

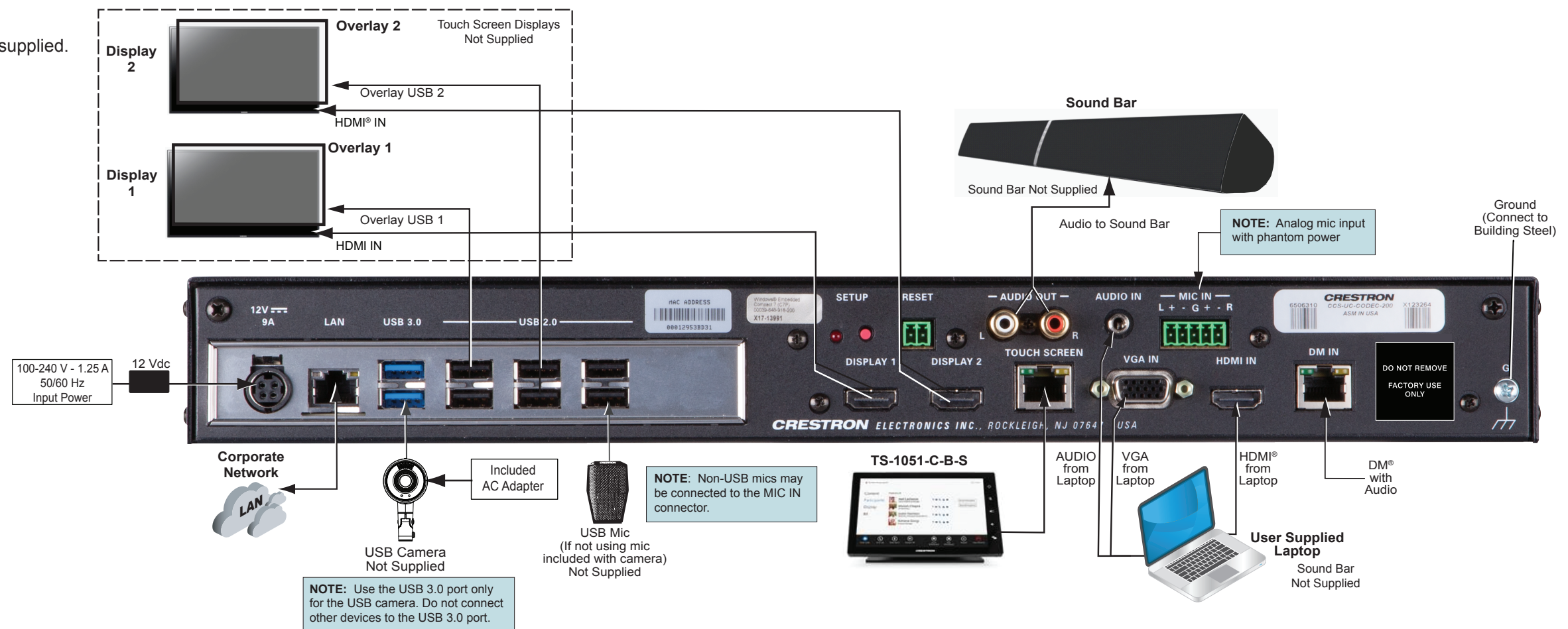
Codec Mounting and Placement Options

The codec may be placed on a flat surface, mounted into a rack, or mounted under a table using the following supplied items:

- The codec may be placed on a shelf or other flat surface using the four supplied rubber feet.
- The supplied CCS-BRKT-200-RMK Rack Mount Kit provides a 2U rack mounting option.
- The supplied CCS-BRKT-200-UTK Under Table Kit provides an under-table mounting option.

2 Hookup (Typical)

Connecting cables are not supplied.



3

Initial Setup

Prerequisite Items Provided by the Skype for Business System Administrator

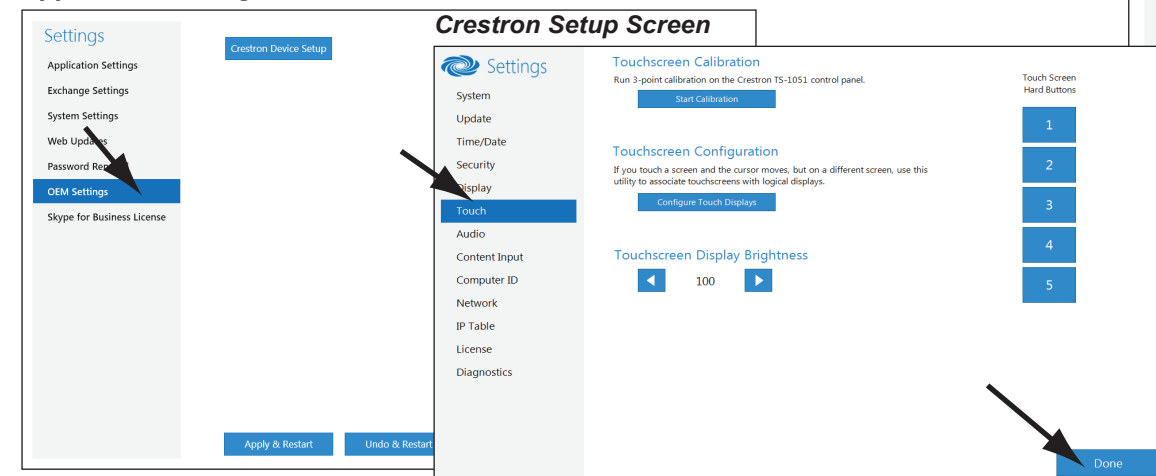
- A working Office 365® Skype for Business account that has been tested with a non-domain attached PC to be used as the Skype for Business room system's account
- A USB flash drive with a valid root certificate for the Skype for Business network (e.g., root.cer)
- A USB keyboard and mouse (for setup only)
- (Optional) A valid Outlook® Web Access (OWA) account for non-domain attached PCs (This may not need to be used but should be on hand.)

Configuration

Once the hardware is installed and all appropriate hookup connections are completed, including a USB keyboard and mouse for setup procedures, apply power to the system and perform the following steps.

1. On the TS-1051-C-B-S login screen, enter the default administrator username **Administrator** and password **Crestron12345678#** to log in.
2. Tap **Accept** on the End User License Agreement (EULA) screen that appears. A second EULA is displayed. Tap **Accept** on this screen to close it.
3. When the Application Configuration screen appears, tap **OEM Settings**, and then tap **Crestron Device Setup** to display the **Crestron Settings** screen.
4. Tap **Time/Date**, select the proper time zone from the drop-down menu, and then set the time and date of the installation. The Skype for Business server does not allow the client to authenticate if the time zone is incorrect.
5. Tap **Touch**, and then tap **Configure Touch Displays** to run the Windows® touch screen setup utility. Follow the on-screen instructions. Upon completion, touch control is functional on the TS-1051-C-B-S and any other touch displays attached to the system.

Application Configuration Screen



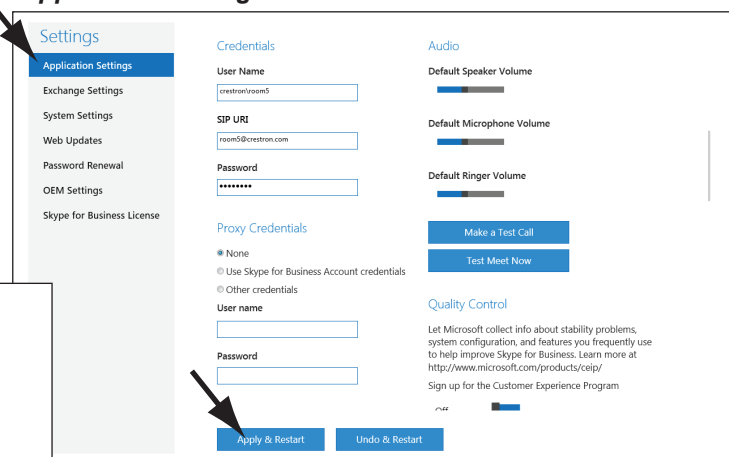
6. Install the USB flash drive containing the root certificate for the Skype for Business network into a USB 2.0 port on the rear of the codec. Tap **Security**, and then tap **Import**. A standard Windows dialog box is displayed. Navigate to the certificate on the USB flash drive, select it, and tap **Open**. A message appears indicating that the import was successful. Tap **Done** on the bottom of the screen. The display returns to the Application Configuration screen.

Alternatively, if the codec is attached to a domain, tap **Computer ID**, tap **Domain**, enter the domain name, and then tap **Join**.

7. Tap **Application Settings**. Enter the Skype for Business credential information provided by the site's IT department and enter it into the **User Name**, **SIP URI**, and **Password** fields. The user name is in the format *domain\username*, and the SIP URI is in the format *username@domain.com*. If the codec is not attached to a domain, enter the user name and password only.
8. Tap **Apply & Restart** at the bottom of the screen. The system reboots to the Application Configuration screen, and all displays should have the correct information. (This may take 30 to 40 seconds.)
9. If it is necessary to change any settings, tap **Options** in the lower right corner of the TS-1051-C-B-S, and then tap **Settings**.
10. On the authentication screen that appears, enter the administrator user name and password for the system, and then tap **Authenticate**. The system reboots and a login screen appears on the TS-1051-C-B-S.
11. Repeat steps 3 through 8 as necessary.

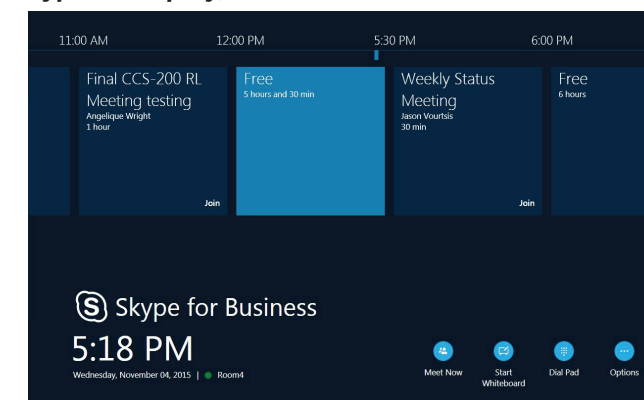
For additional information, refer to the Crestron True Blue Online Help ([Answer ID 5394](#)).

Application Configuration Screen

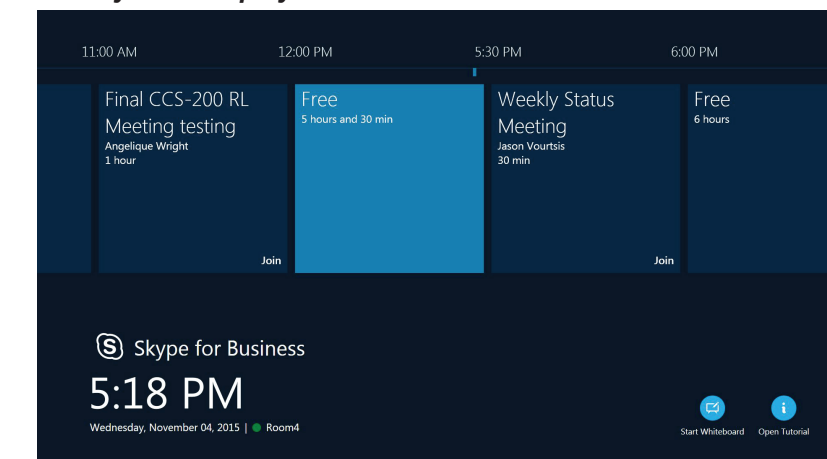


NOTE: Whenever a display change is made, repeat step 5 to ensure that the touch inputs are properly configured. Otherwise, it is possible for touch inputs from both the large screen and the control display to control the cursor on the control display.

Typical Display, 10" Touch Screen



Main System Display



Product warranty can be found at www.crestron.com/warranty.
 The specific patents that cover Crestron products are listed at patents.crestron.com.
 Certain Crestron products contain open source software. For specific information, please visit www.crestron.com/opensource.
 Crestron, the Crestron logo, Crestron RL, and DM are either trademarks or registered trademarks of Crestron Electronics, Inc. in the United States and/or other countries. Microsoft, Office 365, Outlook, Skype, the Skype logo, and Windows are either trademarks or registered trademarks of Microsoft Corporation in the United States and/or other countries. HDMI is either a trademark or registered trademark of HDMI Licensing LLC in the United States and/or other countries. Other trademarks, registered trademarks, and trade names may be used in this document to refer to either the entities claiming the marks and names or their products. Crestron disclaims any proprietary interest in the marks and names of others. Crestron is not responsible for errors in typography or photography.
 This document was written by the Technical Publications department at Crestron.
 ©2016 Crestron Electronics, Inc.