

CSS-ARCH-MOTOR-SLIM

Architectural Slim Motorized Shades

Motorized shade, slim hardware design

Ideal for mounting between window jambs or inside smaller pockets

Square or curved fascia with matching end caps come in a variety of finishes

Optional coupler to link multiple shades on one QMT™ Motor

NOTE: "CSS-ARCH-MOTOR-SLIM" is sold as part of a custom-configured product and orders are placed via the Crestron® Design Tool for Crestron Shading Solutions. This specifications page is for informational purposes and shows the available parts of an Architectural Slim Motorized Shade. To configure shades or order shading parts and accessories, please use the Crestron Design Tool for Crestron Shading Solutions or call 1-855-53-S-H-A-D-E (537-4233) for support.

Architectural Slim Motorized Shades from Crestron® are suitable for wall and ceiling mounting, but are ideal for installing between window jambs or inside smaller pockets because of their compact mounting brackets and hardware. A QMT30 or QMT50 motor fits inside the roller shade tubing, quietly and precisely controlling the movement of the shade. The QMT™ motor features either Cresnet® or infinET EX® technology for communication, making it possible to integrate into a Crestron control system.

Available extrusions include square or curved fascia, with an optional top back cover. In addition, matching end caps come with the order of a fascia.

Slim Brackets & Coupler

Slim mounting brackets come in pairs and hold the shade motor in place as it sits inside the roller tube. In each pair, there is a bracket for the idler end of the motor and a bracket for the motor end. For easy drilling and mounting, the brackets have slotted sides. Slim couplers are used to link individual slim roller shades together, allowing one motor to control multiple shades.

Fascia & Top Back Cover

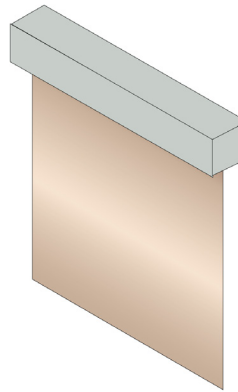
Fascia can be square or curved and is tensioned fit to snap onto the slim brackets. It both camouflages the roller shade and allows access for adjustment and maintenance. A top back cover is available with fascia as part of a two-piece assembly and is suitable for surface mounting to a header, jamb, or wall. End caps are curved or square to match fascia design and come automatically when fascia is ordered.

SPECIFICATIONS

ITEM	HEIGHT	WIDTH	LENGTH	FINISH
Slim Brackets	3 3/4" (95 mm)	3 1/4" (83 mm)	11/16" (17 mm)	Metal; White, Ivory, Clear Anodized, Black, Bronze
Slim Coupler	3 3/4" (95 mm)	3 1/4" (83 mm)	1 3/8" (35 mm)	Metal
Slim Square Fascia	3 13/16" (97 mm)	1 3/16" (31 mm)	Maximum 192" (4877 mm)	Metal; White, Ivory, Clear Anodized, Black, Bronze
Slim Curved Fascia	3 3/4" (96 mm)	1 3/16" (31 mm)	Maximum 192" (4877 mm)	Metal; White, Ivory, Clear Anodized, Black, Bronze
Slim Square/Curved End Caps	Designed to match fascia			Plastic; White, Ivory, Clear Anodized, Black, Bronze
Slim Top Back Cover	3 15/16" (100 mm)	3 5/16" (85 mm)	Maximum 192" (4877 mm)	Metal; White, Ivory, Clear Anodized, Black, Bronze

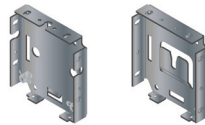
NOTE: Actual maximum shade size is dependent on fabric chosen.

ARCHITECTURAL SLIM MOTORIZED SHADE

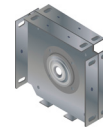


Pictured: Architectural Slim Motorized Shade with Fascia, Top Back Cover, and End Caps

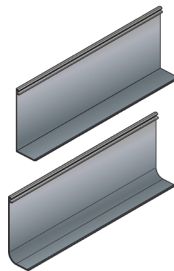
MOUNTING HARDWARE & ACCESSORIES



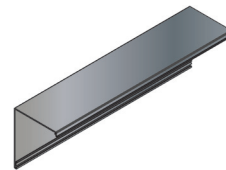
Slim Brackets



Slim Coupler



Curved or Square Fascia



Top Back Cover



Square or Curved End Caps

CSS-ARCH-MOTOR-SLIM Architectural Slim Motorized Shades

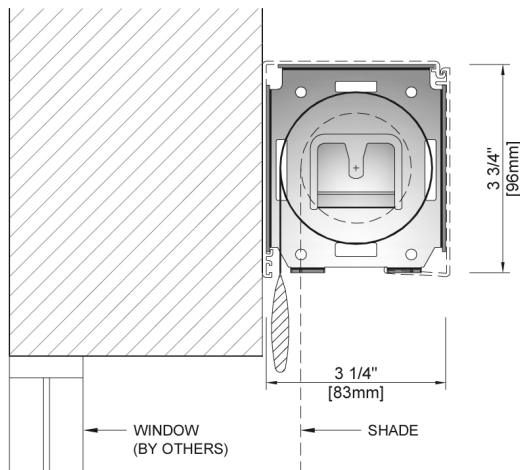
AVAILABLE MODELS

CSA-BRKT-ARCH-SM: Slim Bracket
CSA-FASCIA-SM-SQR: Slim Square Fascia
CSA-FASCIA-SM-SQR-EC: Slim Square Fascia End Caps
CSA-FASCIA-SM-CRV: Slim Curved Fascia
CSA-FASCIA-SM-CRV-EC: Slim Curved Fascia End Caps
CSA-FASCIA-SM-TBC: Slim Top Back Cover
Slim Coupler

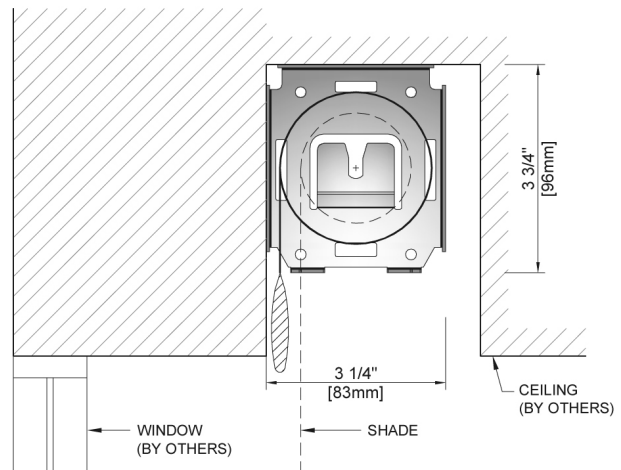
Notes: The specific patents that cover Crestron products are listed online at: patents.crestron.com.

Crestron, the Crestron logo, Cresnet, infiNET EX, and Quiet Motor Technology (QMT) are either trademarks or registered trademarks of Crestron Electronics, Inc. in the United States and/or other countries. Other trademarks, registered trademarks, and trade names may be used in this document to refer to either the entities claiming the marks and names or their products. Crestron disclaims proprietary interest in the marks and names of others. Crestron is not responsible for errors in typography or photography. Specifications are subject to change without notice. ©2014 Crestron Electronics, Inc.

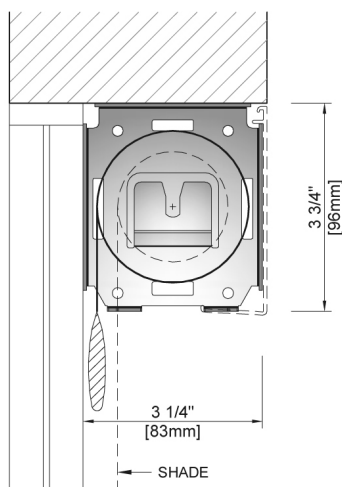
MOUNTING CONDITIONS



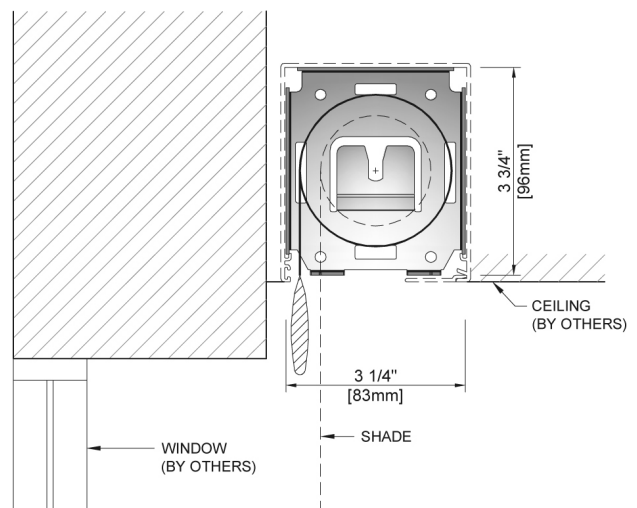
WALL MOUNT



CEILING MOUNT



INSIDE FRAME MOUNT



POCKET MOUNT