

## Remote Asset Management Software

- > Monitor, manage, and schedule meeting in rooms enterprise-wide
- > Streamline the help desk with chat and real-time room status
- > Provide remote assistance – control the display, source, volume and more
- > Track and analyze room usage with robust reporting using built-in templates
- > Receive instant e-mail notifications for scheduled maintenance or when a display is offline
- > Schedule rooms via Microsoft® Outlook®, IBM® Notes®, CollegeNET® 25Live® (R25®), and Google Calendar™
- > View room status and book rooms ad-hoc via the touch screen
- > Use instant messaging to communicate through the room's touch screen
- > Auto-discover assets upon deployment for improved tracking
- > Take advantage of powerful administrative tools
- > Manage media for Crestron® CaptureLiveHD® [2]
- > Supports MS Exchange and Office 365® cloud-based applications
- > Enable automated hotel room setup upon guest check in with popular hotel and hospitality application integration
- > Develop custom applications to interface with Fusion RV® with the Crestron Fusion® API provided web service
- > Schedule end-of-day shutdown for AV equipment

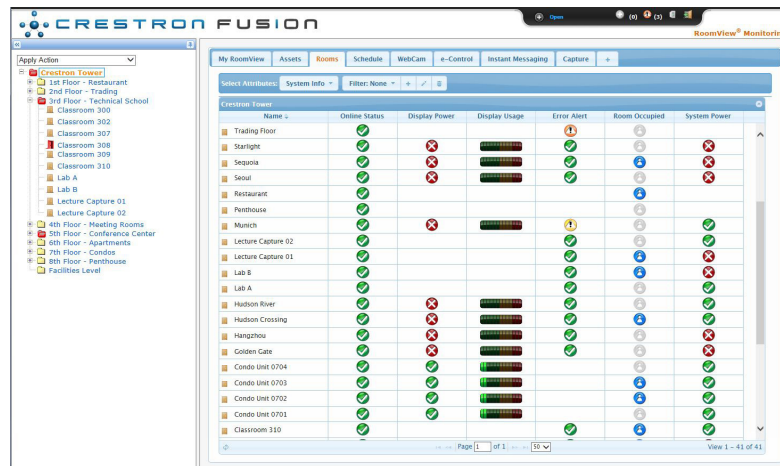
Seamlessly monitor and manage boardrooms, classrooms, lecture halls, video conferencing rooms, and more with Fusion RV®. View room and device statuses from the web-based user interface; remotely control and chat with rooms via the built-in help desk; view reports showing room usage; receive email alerts when a display is offline. With resource management, the Fusion RV room-scheduling engine seamlessly books rooms via Outlook®, IBM® Notes®, CollegeNET® 25Live® (R25®), and Google Calendar™ – or right from the touch screen outside the room!

For CaptureLiveHD™ meeting and lecture capture, see “Media Services” below.

For energy management software, see [Fusion EM®](#).

### Scalable and Redundant Architecture

Built on industry-leading RoomView® Server Edition software, Fusion RV ups the ante with a scalable, redundant architecture. As your room database expands, add additional Fusion RV servers to balance the load. Using multiple servers also provides failover in the event that a server goes down. When deploying Fusion RV across a number of campuses, the network communication between room hardware and Fusion RV remains localized to provide faster performance. Seamlessly link Fusion RV servers from every office around the globe.



### Enhanced Deployment and Asset Management

Fusion RV makes it easy to auto-discover AV assets. During system configuration and programming, any asset can be added to the system symbol. When Fusion RV searches for nearby rooms, it picks up these assets and automatically adds them to the database for tracking and maintenance.

### Fast, Intuitive User Interface

The Fusion RV web-based user interface is extremely easy to navigate. Tabbed-type navigation makes it easy to quickly jump from one management area to the next. Fusion RV also allows for additional tabs with custom URLs to be created. Easily customize your view with sorting, groups, and filtering. Add documents, floor plans, and other images to rooms and assets. Control any room via the virtual touch screen and view activity in real time via a webcam. Send instant messages to discretely communicate with the presenter.

### Reporting

One of the most powerful features of Crestron Fusion is reporting. Analyzing what rooms get used the most, how often, for how long, by whom, and what your return is on technology investments based on the actual equipment used are just a few data points that are invaluable for planning and justifying budgets, building new or renovating existing facilities, and forecasting staffing needs. Built-in templates make it easy to run reports quickly and add new reports dynamically.

Custom reports may be added upon request. Scheduled reporting automatically sends any report to a group of recipients on a regular basis. Furthermore, Crestron Fusion can pull in meeting statistics from past meetings before it was even installed, providing full historical meeting reporting – even for new environments.

### Scheduling

Not only can Fusion RV schedule events like end-of-day shutdown, it can also schedule rooms – based on the room's location, capacity, and assets – via the built-in scheduler, Microsoft® Exchange, Microsoft Office 365®, IBM Notes®, CollegeNET 25Live (R25), Google Calendar, and any other

# SW-FUSION-RV Remote Asset Management Software

providers that have a RESTful API service (custom development required). Schedule via the web-based Fusion RV interface or use the convenient RoomView Add-in for Outlook. Take advantage of new email notifications for meetings with message templates.

## Administration

Fusion RV provides an intuitive user interface to make database administration easier. Use the fast search to find rooms, assets, attributes, and other database objects. The server configuration screens make managing multiple servers simple. Best of all, application settings don't require a server restart when changes are made.

## Preconfigured Server Option

For quick and easy implementation, Crestron offers the [CEN-FUSION-RVS-R320](#) Fusion RV Server System.<sup>[1]</sup> The CEN-FUSION-RVS-R320 is preconfigured with all the necessary software required for Fusion RV, including a full Fusion RV user license.

## Media Services

Media Services is a component of Fusion RV that works with the [Capture HD](#) High-Definition Capture Recorder to manage and process media files as part of a complete [CaptureLiveHD](#) system. It is included in the purchase of a Fusion RV license at no additional charge.<sup>[2]</sup>

## SPECIFICATIONS

### Minimum Client Requirements

**Platform & Operating System:** Mac® running OS X®; or PC running Windows® XP SP2, Windows Vista®, or Windows 7 or later

**Memory (RAM):** 512 MB RAM (2 GB recommended)

**Network Interface:** 10/100 Ethernet

**Screen Resolution:** 1024 x 768

### Minimum Server Requirements<sup>[1]</sup>

**Operating System:** Microsoft® Windows Server® versions 2008 R2, 2012, or 2012 R2

**Processors:** (2) Dual-Core Intel® Xeon® 2.8 GHz

**Memory (RAM):** 8 GB

**Disk Drive:** 200 GB or as recommended by Microsoft for the chosen operating system

**Network Interface:** Gigabit Ethernet

### Minimum SQL Server® Requirements<sup>[3]</sup>

**Operating System:** Windows Server versions 2008 R2, 2012, or 2012 R2

**SQL Server Version:** SQL Server 2008 R2

**Processor:** (1) Quad-Core 3 GHz

**Memory (RAM):** 16 GB

### Control System Compatibility

Crestron® 3-Series® or 2-Series with Ethernet interface

## Room Support

Fusion RV® supports up to 750 connected rooms on one server

## Language Support

Chinese (Simplified);  
Chinese (Traditional);  
Danish;  
Dutch (Netherlands);  
English (US);  
English (UK);  
French;  
German;  
Hebrew;  
Italian;  
Japanese;  
Korean;  
Norwegian;  
Portuguese;  
Russian;  
Spanish;  
Swedish

## MODELS & ACCESSORIES

### Available Models

**SW-FUSION-RV:** Fusion RV® Remote Asset Management Software

### Available Accessories

**CEN-FUSION-RVS-R320:** Pre-configured Fusion RV® Server System

**CEN-FUSION-RVEMS-R320:** Pre-configured Fusion RV® & Fusion EM® Server System

**TPMC-3SM-B-S:** 2.8" Room Scheduling Touch Screen, Black Smooth

**TPMC-3SM-W-S:** 2.8" Room Scheduling Touch Screen, White Smooth

**TPMC-4SM-B-S:** 4.3" Room Scheduling Touch Screen, Black Smooth

**TPMC-4SM-W-S:** 4.3" Room Scheduling Touch Screen, White Smooth

**TPMC-4SM-FD-B-S:** 4.3" Room Scheduling Touch Screen w/Full Duplex Audio, Black Smooth

**TPMC-4SM-FD-W-S:** 4.3" Room Scheduling Touch Screen w/Full Duplex Audio, White Smooth

**TSW-730-B-S:** 7" Room Scheduling Touch Screen, Black Smooth

**TSW-730-W-S:** 7" Room Scheduling Touch Screen, White Smooth

**TSS-752-B-S:** 7" Room Scheduling Touch Screen, Black Smooth

**TSS-752-W-S:** 7" Room Scheduling Touch Screen, White Smooth

# SW-FUSION-RV Remote Asset Management Software

## Notes:

1. The Crestron [CEN-FUSION-RVS-R320](#) server, sold separately, is preconfigured with all necessary software including Fusion RV.
2. Refer to the [Crestron CaptureLiveHD™ Design Guide, Doc. #4552](#) for complete CaptureLiveHD system requirements and design guidelines.
3. The SQL Server must be separate from the Crestron Fusion server.

This product may be purchased from an authorized Crestron dealer. To find a dealer, please contact the Crestron sales representative for your area. A list of sales representatives is available online at [www.crestron.com/salesreps](http://www.crestron.com/salesreps) or by calling 800-237-2041.

The specific patents that cover Crestron products are listed online at: [patents.crestron.com](http://patents.crestron.com).

Crestron, the Crestron logo, 3-Series, Capture HD, CaptureLiveHD, Crestron Fusion, Fusion EM, Fusion RV, and RoomView are either trademarks or registered trademarks of Crestron Electronics, Inc. in the United States and/or other countries. Mac and OS X are either trademarks or registered trademarks of Apple Inc. in the United States and/or other countries. CollegeNET, 25Live, and R25 are either trademarks or registered trademarks of CollegeNET, Inc. in the United States and/or other countries. Google Calendar is either a trademark or registered trademark of Google Inc. in the United States and/or other countries. Intel and Xeon are either trademarks or registered trademarks of Intel Corporation in the United States and/or other countries. IBM and Notes are either trademarks or registered trademarks of International Business Machines Corporation in the United States and/or other countries. Microsoft, Outlook, Office 365, SQL Server, Windows, Windows Server, and Windows Vista are either trademarks or registered trademarks of Microsoft Corporation in the United States and/or other countries. Other trademarks, registered trademarks, and trade names may be used in this document to refer to either the entities claiming the marks and names or their products. Crestron disclaims any proprietary interest in the marks and names of others. Crestron is not responsible for errors in typography or photography. Specifications are subject to change without notice. ©2015 Crestron Electronics, Inc.