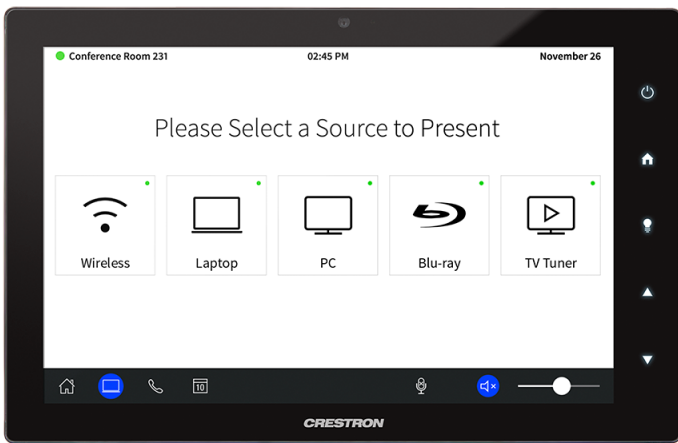


TSW-1060

10.1 in. Touch Screen



- *Affordable and easy to install touch screen with ultra clean, modern appearance*
- *10.1 in. (257 mm) widescreen active-matrix color display and 1280 x 800 WXGA display resolution*
- *Capacitive touch screen display and backlit soft-touch capacitive buttons*
- *Supports Crestron HTML5 and Smart Graphics® software custom projects*
- *Voice recognition capability*
- *H.264 or MJPEG streaming video display*
- *Built-in microphone, speakers, and 5 MP H.264 IP camera*
- *Rava® SIP intercom and phone technology*
- *Native apps for Sonos® home sound control, Zoom Rooms™ conferencing control, Microsoft Teams® online meeting solution, and various room scheduling services*
- *Built-in web browsing*
- *Single-wire Ethernet connection with PoE or PoE+ power*
- *Enterprise grade security*
- *Web or cloud based configuration*
- *Electrical wall box or lectern mount*
- *Available in smooth black or white finish*

Advanced Touch Screen Control

A Crestron® touch screen offers an ideal user interface for controlling all the technology in your home, boardroom, classroom, courtroom, or command center. Touch screens simplify and enhance the way you use technology, doing away with the need for remote controls, wall switches, smartphone apps, and computer screens. For controlling audio, video, lighting, shades, HVAC, security, and other systems, Crestron touch screens are fully-customizable with easy-to-use controls and icons, true feedback and real-time status display, live streaming video, voice recognition, web browsing, and a

full-featured media player for an enhanced multiroom entertainment experience.

The TSW-1060 series features a 10.1 in. capacitive touch screen display with Crestron HTML5 and Smart Graphics® software technology and five soft-touch buttons. PoE (Power over Ethernet) connectivity and a range of mounting options make installation simple for both new and retrofit applications. Additional features include the ability to control any function using voice commands, view security cameras and other video sources, communicate using built-in video intercom and phone capabilities, and browse the Internet. Native applications are included to enable use as a room scheduling panel, to control a [Zoom Rooms™](#) conferencing system or [Microsoft Teams®](#) online meeting solution, and to access a [Sonos®](#) home sound system.¹

For dedicated room scheduling applications, see also the [TSS-10](#) series 10.1 in. room scheduling touch screen.

Dynamic User Interfaces

The TSW-1060 supports custom user interfaces created with [Crestron HTML5 User Interface](#) and Smart Graphics technologies, allowing greater flexibility for UI developers and programmers.

- Crestron HTML5 User Interface enables UI designers to develop rich, front-end user interfaces with increased reusability and efficiency using modern web methodologies. Crestron HTML5 User Interface development components are provided to simplify creating user interfaces built on standard web technologies.
- Smart Graphics enables programmers to integrated fluid gesture-driven controls, animated feedback, rich metadata, embedded apps and widgets, and full-motion video into their user interfaces. Smart Graphics provides dynamic features such as graphical buttons and sliders, lists and toolbars, drag-and-drop objects, dashboard widgets, screensavers, and customizable themes.

Soft-Touch Buttons

The TSW-1060 series includes five backlit, soft-touch capacitive buttons for quick access to commonly used functions. These buttons are pre-labeled with icons for Power, Home, Lights, Up, and Down functions. Each button is programmable via a control system for custom functionality, and any unused button can be hidden by turning off its backlight.

Auto Brightness Control

To ensure optimal visibility under varying lighting conditions, the TSW-1060 series includes a built-in light sensor, which regulates the display and button backlighting brightness according to the ambient light level in the room. Separate auto brightness settings are provided for the display and buttons to allow each to be adjusted or defeated as needed.

TSW-1060

10.1 in. Touch Screen

Voice Recognition

With built-in voice recognition, the TSW-1060 provides the ability to use spoken commands to quickly turn devices on or off, select and play a specific media title or playlist, change the channel, choose a lighting scene, lower the window shades, lock the doors, arm the security system, or enter a password. Simply say a command and Crestron does the rest.^{1,2}

Streaming Video

Native support for H.264 and MJPEG formats allows the TSW-1060 to display live streaming video from an IP camera, a streaming encoder (Crestron [CEN-NVS200-PWE](#), [DM-TXRX-100-STR](#), or similar³), or a [DigitalMedia™ switcher](#). Video is delivered to the touch screen over Ethernet, eliminating the need for any extra video wiring.

Rava SIP Intercom

[Rava® SIP Intercom Technology](#) enables hands-free VoIP communication with other Rava-enabled touch screens and door stations. Rava works over Ethernet, supporting 2-way intercom and paging without requiring any special wiring. VoIP phone capability is also possible through integration with a SIP-compatible IP phone system or SIP server, allowing hands-free telephone functionality complete with speed-dialing, caller ID, custom ringers, and other enhancements. Built-in echo cancellation affords full-duplex performance for clear, seamless voice communication using integrated microphone and speakers.²

Built-in Camera

A 5 megapixel camera is built into the TSW-1060 to support video intercom and room monitoring capabilities. This feature allows individuals to communicate between two touch screens, or between one touch screen and a Rava-compatible video door station. It can also be used to visually monitor any room securely using an H.264 compatible decoder (Crestron [DM-TXRX-100-STR](#), [DM-RMC-100-STR](#), or similar³) or a third-party video monitoring system.²

Sonos App

Merging technologies from [Sonos and Crestron](#) brings a powerful whole-house music experience. From any touch screen in the house, browse for tracks, artists, or playlists using all the services available from Sonos and instantly play them in any room using Sonos® wireless speakers or a Crestron [Sonnex® multiroom audio system](#). The Sonos app runs natively on the TSW-1060, enabling enhanced control of Sonos products as part of a complete Crestron system. The app checks for updates nightly so it's always current.^{1,10}

Room Scheduling Apps

The TSW-1060 comes with apps for all the most popular enterprise scheduling services.

- **Crestron Scheduling App:** Supports direct integration with [Crestron Fusion®](#) software, Microsoft Exchange Server® software (for users of Outlook® software and Office 365®

software), the Google Calendar™ calendaring app (including G Suite™ software), CollegeNET® 25Live® scheduling software, and Ad Astra™ software.⁴

Crestron room scheduling touch screens help organizations to maximize productivity and manage usage for every meeting space. They can be installed at the entrance to each room to provide indication of the room's availability and a view of its schedule for the day. If desired, the room can be reserved on the spot for an ad hoc meeting. A [CEN-ODT-C-POE](#) occupancy sensor can also be paired to the touch screen, allowing for occupancy status to be reported instantly to the scheduling app for no-shows and unscheduled room usage.

Crestron room scheduling also offers three levels of customization—ranging from simply configuring settings in the web user interface to modifying the application source code for a completely unique appearance—depending on the needs of an enterprise.⁵

- **Third-Party Apps:** Includes support for numerous third-party scheduling apps. Support for new apps is provided via firmware updates.^{6,7}
- **Additional Options:** Supports IBM® Notes® software through a Crestron Fusion on-premises server.

Whatever provider you choose, setup is as simple as connecting the touch screen to the network and choosing an app from the web-based setup menu or built-in setup screens. The selected app downloads from the cloud and installs on the touch screen without any programming or control system required.⁷

Status Indicator Options

Adding the optional light bar accessory ([TSW-1060-LB](#) series) to a TSW-1060 produces a light around the perimeter of the touch screen. For room scheduling applications, the light bar provides a 180° visual indication of a room's availability status, illuminating green if the room is available and red when reserved. Custom functionality is available by integrating with a control system, allowing for illumination in almost any color.⁸

As an alternative to the light bar, Crestron offers a selection of hallway signs and indicators that mount on the wall or ceiling above each touch screen. The [SSW](#), [SSW-EL](#), [SSC](#), and [SSC-EL](#) series hallway signs feature a two sided acrylic sign face that can be custom engraved with the room name or number. The [SIW-100](#) offers a lower profile wall mount status indicator.⁸

Zoom Rooms App

The [Zoom Rooms™](#) conferencing control application enables the TSW-1060 to be used as a touch screen control panel for a Zoom Rooms software-based conferencing and collaboration solution. The TSW-1060 offers a superior alternative to a consumer tablet device, providing a more reliable and secure platform with versatile, streamlined mounting options. Its 10.1 in. color touch screen delivers the same user-friendly Zoom Rooms experience as a typical tablet, but without the risk of misplacing the device. Instead of Wi-Fi® communications, the TSW-1060 uses wired Ethernet to ensure reliable connectivity.⁹

TSW-1060

10.1 in. Touch Screen

The TSW-1060 may be configured to run the Zoom Rooms app exclusively, or to allow toggling between the Zoom Rooms app and touch screen control mode. The toggling option is used to integrate Zoom Rooms conferencing into a larger AV system while providing touch screen control for both.

NOTE: The Zoom ultrasonic proximity signal is supported up to an average of 3 ft (1 m) from the TSW-1060 touch screen to an end user device. The range will vary based on environmental noise, the sensitivity of the end user device, and the orientation to the touch screen.

Microsoft Teams App

The [Microsoft Teams](#)® online meeting solution is the hub for teamwork in Office 365® software, engaging people through messaging, voice over IP, online meetings, conferencing, content sharing, and collaboration. The Microsoft Teams application on the TSW-1060 enables presentation, calling, conferencing, and collaboration — all through a single touch screen console, with exceptional full-duplex wideband audio and HD video. A consistent user experience in every meeting space is provided via the familiar and intuitive Microsoft Teams UI, affording simple operation, built-in calendaring, and one-touch meeting joins.

NOTE: The TSW-1060 must be operated in Microsoft Teams mode in conjunction with a [UC-ENGINE](#) or [UC-BRKT-100-ASSY](#).

Web Browsing

Using its built-in web browser, the TSW-1060 provides access to online program guides and other web-based services at the touch of a button, allowing for touch screen control of DVRs and other devices without having to use a smart device¹

Onscreen Keyboard

Typing in passwords, URLs, and text searches is facilitated using the onscreen multilanguage keyboard.

Multitouch Support

The capacitive touch screen display affords enhanced capabilities for browsing web pages using multitouch control.

Audio Feedback

Customized audio files can be loaded to add another dimension to the touch screen graphics using personalized sounds, button feedback, and voice prompts.

Single-Wire Connectivity

An Ethernet LAN connection is all that is required to wire the TSW-1060, containing all control, video, intercom, and power signals within a single wire.

Power over Ethernet

Using PoE technology, the TSW-1060 gets its operating power directly through the network cable. PoE (Power over Ethernet) eliminates the need for a local power supply or any dedicated power wiring. Crestron PoE switches ([CEN-SW-POE-5](#) or [CEN-SWPOE-16](#)³) offer a total networking solution with built-in PoE for multiple touch screens. A PoE Injector ([PWE-4803RU](#)³) is also available to support a single touch screen.

NOTE: PoE+ is required when connecting a light bar or hallway sign via USB. Refer to the "Power" specifications for more details.

Enterprise Grade Security

Crestron touch screens employ enterprise-grade networking with robust security features such as 802.1X authentication, TLS encryption, HTTPS connectivity, and Active Directory® service integration. These features are imperative to protect your network against service interruptions and malicious intrusions, and to ensure compliance with your organization's network policies. Cloud-based provisioning and management streamlines the process of configuring, monitoring, and updating every touch screen on the network. Additional support for SNMP allows every touch screen to be monitored by your IT administrator.

Crestron XiO Cloud Service

The TSW-1060 is compatible with the Crestron XiO Cloud™ service, which is an IoT (Internet of Things) based platform for remotely provisioning, monitoring, and managing Crestron devices across an enterprise or an entire client base. Built on the Microsoft® Azure® software platform and utilizing Microsoft's industry-leading Azure IoT Hub technology, Crestron XiO Cloud enables installers and IT managers to deploy and manage thousands of devices in the time it previously took to manage just one. Unlike other virtual machine-based cloud solutions, Azure services provide unlimited scalability to suit the ever-growing needs of an enterprise. For more information, visit www.crestron.com/xiocloud.

Crestron Home OS Control

The TSW-1060 may be used to control a [Crestron Home™ OS](#) whole home solution. Select the Crestron Home app from the touch screen to control lighting, shades, climate, media, security, and cameras, including the ability to create and recall scenes that create a desired ambiance throughout a home. A TSW-1060 may be installed in each room in the home to provide easy access to the room's environmental and media subsystems.

TSW-1060

10.1 in. Touch Screen

2N® Door Station Integration

The TSW-1060 may be integrated with a supported 2N® door station¹¹ via the touch screen's built-in Rava SIP intercom to provide a door station solution for Crestron Home or other residential systems. When a call is initiated on the 2N door station, the video and audio feed is displayed on the TSW-1060. Controls are provided on the touch screen to answer or decline the call, and Crestron Home quick actions (such as "open gate") may be performed while the call is in progress. A "do not disturb" option is also provided to prevent calls from appearing on the TSW-1060.

Wall or Lectern Mounting Options

Using the bracket provided, the TSW-1060 is easily installed over a 2-gang or 3-gang US electrical box, or a 2-gang European or UK electrical box. The same bracket allows for installation in a wooden lectern or podium over a rectangular cutout. When installed, the touch screen protrudes only 1/2 in. out from the mounting surface and leaves no visible screws for an ultra clean appearance. A security latch option is included to deter unauthorized removal of the touch screen.

Additional mounting options are afforded using the [TSW-UMB-60](#) universal mounting bracket:¹²

- Can be used by itself as a postconstruction solution for retrofitting the TSW-1060 into existing drywall.
- Can be used with the [TSW-UMB-60-PMK](#) preconstruction mounting kit for applications that don't require a back box.
- Can be used with the [TSW-UMB-60-BBI](#) back box for masonry and concrete applications.

The [TS-10-MSMK](#)³ allows a TSW-1060 touch screen to be mounted directly to virtually any flat surface, which is ideal for mounting at the entrance to a meeting space for room scheduling applications. The [TSW-760/1060-MSMK](#)³ provides a similar surface mounting solution that can also be mounted over a conventional electrical box. When installed using the TSW-760/1060-MSMK, the touch screen is angled upwards at a 20° tilt.

When installing the TSW-1060 in place of an older Crestron touch screen (APAD, CT-1000, LC-1000, TPS-4L, TPS-6L, TPS-2000L, or TPS-3100L), Crestron offers retrofit mounting brackets ([TSW-60-RMB](#) series³), which facilitate replacement without having to tear out the old mounting hardware or patch the wall.

Other Mounting Options

Using the optional tabletop kit ([TSW-1060-TTK](#)³), the TSW-1060 becomes a stylish, freestanding touch screen that fits perfectly on a table, desk, or countertop. It can even be permanently attached to the surface using the optional swivel mount kit ([TSW-560/760/1060-SMK](#)³). The TSW-1060 can also be mounted in a 19 in. EIA equipment rack using the optional rack mount kit ([TSW-1060-RMK-2](#)³). When rack mounted, the touch screen occupies four rack spaces.

Specifications

Touch Screen Display

Display Type	TFT active matrix color LCD
Size	10.1 in. (257 mm) diagonal
Aspect Ratio	16:10 WXGA
Resolution	1280 x 800 pixels
Brightness	400 nits (cd/m ²)
Contrast	950:1
Color Depth	24 bit, 16.7M colors
Illumination	Edgelit LED with auto brightness control
Viewing Angle	±80° horizontal, ±80° vertical
Touch Screen	Projected capacitive, 5-point multitouch capable

Buttons

Hard Keys	(5) Projected capacitive push buttons, backlit with auto brightness control, per-button show/hide (backlight enable/disable), prelabeled with icons for Power, Home, Lights, Up, and Down
Reset	(1) Miniature push button on rear panel for hardware reset

Graphics Engine

Crestron HTML5 and Smart Graphics® software technology, multilanguage web browser¹, multilanguage onscreen keyboard, screensaver, single scalable streaming video window, native Sonos® app¹, native room scheduling applications⁷, native Zoom Rooms™ app, native Microsoft Teams® app, native Crestron Home™ OS app, setup and diagnostics via web browser or onscreen UI

Room Scheduling Support

Crestron Scheduling App	Crestron Fusion® software, Microsoft Exchange Server® and Office 365® software, Google Calendar™ calendaring app and G Suite™ software, CollegeNET® 25Live® software, and Ad Astra™ software (IBM® Notes® software is also supported through Crestron Fusion on-premises server only) ⁴
Third-Party Apps	Includes support for various third-party scheduling apps ^{6,7}

TSW-1060

10.1 in. Touch Screen

Languages

Smart Graphics	Arabic, Chinese (Simplified), Chinese (Traditional), Czech, Danish, Dutch, English (UK), English (US), Finnish, French, German, Greek, Hebrew, Hungarian, Italian, Japanese, Korean, Norwegian, Polish, Portuguese, Portuguese (Brazilian), Romanian, Russian, Slovak, Spanish, Swedish, Thai
Onscreen Keyboard	Arabic, Chinese (Simplified), Croatian, Czech, Danish, Dutch, English (UK), English (US), Finnish, French (Canada), French (Switzerland), German, Hebrew, Hungarian, Italian, Japanese, Norwegian Bokmal, Polish, Portuguese, Russian, Serbian, Spanish, Swedish, Turkish
Voice Recognition	Afrikaans (South Africa); Chinese, Mandarin (China, Simplified); Chinese, Mandarin (Hong Kong, Simplified); Chinese, Mandarin (Taiwan, Traditional); Chinese, Yue (Hong Kong, Traditional); Czech (Czech Republic); Dutch (Netherlands); English (Australia); English (Canada); English (Generic); English (India); English (New Zealand); English (South Africa); English (UK); English (US); French (France); German (Germany); isiZulu (South Africa); Italian (Italy); Japanese (Japan); Korean (South Korea); Polish (Poland); Portuguese (Brazil); Russian (Russia); Spanish (Spain); Turkish (Turkey)
Web Browser	Arabic, Bulgarian, Catalan, Chinese, Croatian, Czech, Danish, Dutch, English, Filipino, Finnish, French, German, Greek, Hebrew, Hindi, Hungarian, Indonesian, Italian, Japanese, Korean, Latvian, Lithuanian, Norwegian Bokmal, Pashto, Persian, Polish, Portuguese, Romanian, Romansh, Russian, Serbian, Slovak, Slovenian, Spanish, Swedish, Thai, Turkish, Ukrainian, Vietnamese
Room Scheduling	Chinese (Simplified), Chinese (Traditional), Danish, Dutch (Netherlands), English (US), English (UK), French, German, Hebrew, Italian, Japanese, Korean, Norwegian, Portuguese (Brazil), Portuguese (Portugal), Russian, Spanish, Swedish

Memory

RAM	2 GB DDR3L
Storage	Firmware/Application: 4 GB Class 10 microSD card; System: 4GB eMMC
Maximum Project Size	600 MB

Communications

Ethernet	100 Mbps, auto switching, auto negotiating, auto discovery, full/half duplex, TCP/IP, UDP/IP, CIP, DHCP, SSL, TLS, SSH, SFTP (SSH File Transfer Protocol), IEEE 802.1X, SNMP, IPv4 or IPv6, Active Directory® service authentication, HTTPS web browser setup, Crestron XiO Cloud™ client, IEEE 802.3at compliant
USB	USB 2.0 host for light bar or hallway sign ⁸

Streaming Decoder

Video Formats	H.264 (MPEG-4 part 10 AVC, MJPEG)
Audio Formats	AAC Stereo
Bitrates	Up to 25 Mbps (20 Mbps maximum recommended)
Input Resolutions	Up to 1920x1080@30fps
Protocol	RTSP

Streaming Encoder and Camera²

Camera Resolution	5.0 MP
Field of View	50° horizontal
Video Format	H.264 (MPEG-4 part 10 AVC)
Output Resolution	1280x720
Protocol	RTSP, ONVIF discovery

Audio

Features	Built-in microphone and speakers, Rava® SIP Intercom, voice recognition ^{1,2}
Audio Feedback Formats	MP3

Connectors

LAN PoE	(1) 8-pin RJ45 connector, female, with 2 LED indicators; 100Base-TX Ethernet port; PoE+ PD port; Green and yellow LEDs indicate Ethernet port status
USB	(1) USB Type A connector, female; USB 2.0 host port; For optional light bar or hallway sign ⁸

TSW-1060

10.1 in. Touch Screen

Power

PoE (Power over Ethernet)	IEEE 802.3at Type 2 compliant PoE+ PD (Powered Device); Normally requests 15 Watts from an 802.3at Type 2 PSE with LLDP advanced power management; With room scheduling and USB enabled, requests 18 Watts from an 802.3at Type 2 PSE with LLDP; Requests 30 Watts (PoE+ Class 4) from an 802.3at Type 2 PSE without LLDP; Requests 15.4 Watts (PoE Class 0) from an 802.3af (or 802.3at Type 1) PSE <i>NOTE: Enabling the USB port requires use of an 802.3at Type 2 PoE+ PSE.</i>
----------------------------------	--

Environmental

Temperature	32 to 112 °F (0 to 45 °C)
Humidity	10% to 95% RH (noncondensing)
Heat Dissipation	44 BTU/hr

Construction

Housing	Plastic, smooth black or white finish, edge-to-edge glass with black or white surround
Mounting	Surface mount over a 2 or 3-gang US electrical box, 2-gang European (DIN 49073) electrical box, or 2-gang UK (BS 4662) electrical box; Lectern mount over a 2-1/5 in. H x 3-3/4 in. W (56 mm H x 96 mm W) cutout; 1-3/8 in. (35 mm) minimum mounting depth; Additional wall mount, surface mount, rack mount, and tabletop options available separately

Dimensions

Height	6.59 in. (168 mm)
Width	10.23 in. (260 mm)
Depth	1.52 in. (39 mm)

Dimensions do not include mounting bracket or add-on accessories

Weight

23.9 oz (675 g)

Compliance

Regulatory Model: TSW-1060

UL® Listed for US and Canada, IC, CE, FCC Part 15 Class B digital device

Available Models

TSW-1060-B-S
TSW-1060-W-S

Accessories

For supported accessories, visit the appropriate TSW-1060 product page at www.crestron.com.

Notes:

1. Voice recognition, web browsing, weather information, and certain other functions require an Internet connection.
2. The camera, microphone, and Bluetooth® transceiver may each be defeated programmatically at any time. For applications demanding an extra measure of privacy, Crestron offers models [TSW-1060-NC-B-S](#) and [TSW-1060-NC-W-S](#), which have no physical camera, microphone, or Bluetooth transceiver installed.
3. Item(s) sold separately. Refer to each product's spec sheet for complete information.
4. Room Scheduling mode requires the TSW-1060 to be designated exclusively for room scheduling use, which precludes use of certain features and functions described in this spec sheet. For design assistance, contact the Crestron True Blue support team at www.crestron.com/support.
5. For more information on custom programming for the Crestron® room scheduling app, refer to the Crestron Room Scheduling Panels Programming Guide (Doc. 8213) at www.crestron.com/manuals.
6. Refer to the firmware release notes for a list of all scheduling apps that are supported by that firmware release.
7. Additional subscriptions and/or licenses may be required. Refer to each provider's website for details about the capabilities and requirements of its scheduling application and services. Third-party apps typically run on the TSW-1060 as they do on a tablet device. The TSW-1060 runs only one app, which is selected at setup. Only the apps approved and delivered by Crestron can run on the TSW-1060.
8. The light bar and hallway sign accessories are sold separately. Only one light bar or hallway sign may be connected to the TSW-1060. Use of either accessory precludes use of the other without the addition of a custom-programmed control system and Cresnet® network wiring for the hallway sign. Refer to each accessory's spec sheet for further information.
9. A complete Zoom Rooms solution requires a mini PC or Mac computer running Zoom software, a Zoom Rooms subscription, plus additional peripherals and cables. Visit zoom.us/zoomrooms for more information about Zoom Rooms capabilities, hardware requirements, and subscription plans. For design assistance, contact the Crestron True Blue support team at www.crestron.com/support.
10. The TSW-1060 supports the Sonos app up to S1 App (v10.6.2). The S2 App is not supported.
11. Supported 2N door stations include the 2N IP Audio Kit, 2N IP Audio Kit Lite, 2N IP Base, 2N IP Force, 2N IP Safety, 2N IP Solo, 2N IP Uni, 2N IP Vario, 2N IP Verso, and 2N IP Video Kit. For pairing instructions, refer to the Crestron Home OS 3 Product Manual (Doc. 8525) and the TSW-560/TSW-760/TSW-1060 Supplemental Guide (Doc. 7927) at www.crestron.com/manuals.

TSW-1060

10.1 in. Touch Screen

- The [TSW-UMB-60](#), [TSW-UMB-60-PMK](#), and [TSW-UMB-60-BBI](#) are all sold separately. The TSW-UMB-60 is also compatible with older TSW-UMB-PMK preconstruction mounting kits and TSW-550-BBI back boxes, allowing the TSW-1060 to be installed in place of a previous generation TSW-5xx series touch screen, or any other device that was originally installed using a TSW-UMB-PMK or TSW-550-BBI, without modification to the wall. If replacing another older Crestron device, use the appropriate [TSW-60-RMB](#) series retrofit mounting bracket (sold separately).

This product may be purchased from select authorized Crestron dealers and distributors. To find a dealer or distributor, please contact the Crestron sales representative for your area. A list of sales representatives is available online at <https://www.crestron.com/How-To-Buy/Find-a-Representative> or by calling 855-263-8754.

The specific patents that cover Crestron products are listed online at patents.crestron.com.

Certain Crestron products contain open source software. For specific information, please visit www.crestron.com/opensource.

Crestron, the Crestron logo, Cresnet, Crestron Fusion, Crestron Pyng, Crestron XiO Cloud, DigitalMedia, PinPoint, Rava, Smart Graphics, SmartObjects, and Sonnex are either trademarks or registered trademarks of Crestron Electronics, Inc. in the United States and/or other countries. 2N is either a trademark or a registered trademark of 2N Telekomunikace in the United States and/or other countries. Ad Astra is either a trademark or a registered trademark of Ad Astra Information Systems, LLC in the United States and/or other countries. Bluetooth is either a trademark or registered trademark of Bluetooth SIG, Inc. in the United States and/or other countries. CollegeNET and 25Live are either trademarks or registered trademarks of CollegeNET, Inc. in the United States and/or other countries. G Suite and Google Calendar are either trademarks or registered trademarks of Google, Inc. in the United States and/or other countries. IBM and Notes are either trademarks or registered trademarks of International Business Machines Corporation in the United States and/or other countries. Microsoft, Active Directory, Azure, Microsoft Exchange Server, Microsoft Teams, Office 365, and Outlook are either trademarks or registered trademarks of Microsoft Corporation in the United States and/or other countries. Sonos is either a trademark or registered trademark of Sonos, Inc. in the United States and/or other countries. UL is either a trademark or a registered trademark of Underwriters Laboratories, Inc. in the United States and/or other countries. Wi-Fi is either a trademark or registered trademark of Wi-Fi Alliance in the United States and/or other countries. Zoom and Zoom Rooms are either trademarks or registered trademarks of Zoom Video Communications, Inc. in the United States and/or other countries. Other trademarks, registered trademarks, and trade names may be used in this document to refer to either the entities claiming the marks and names or their products. Crestron disclaims any proprietary interest in the marks and names of others. Crestron is not responsible for errors in typography or photography.

Specifications are subject to change without notice.

©2020 Crestron Electronics, Inc.

Rev 06/05/20

TSW-1060

10.1 in. Touch Screen

