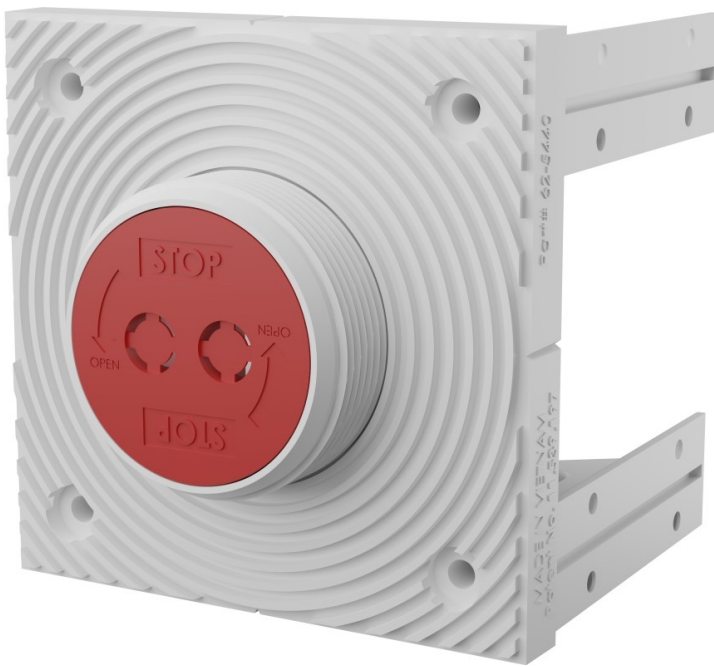


MMK-RS

Remote Device Mount for Crestron® In-Wall Sensors



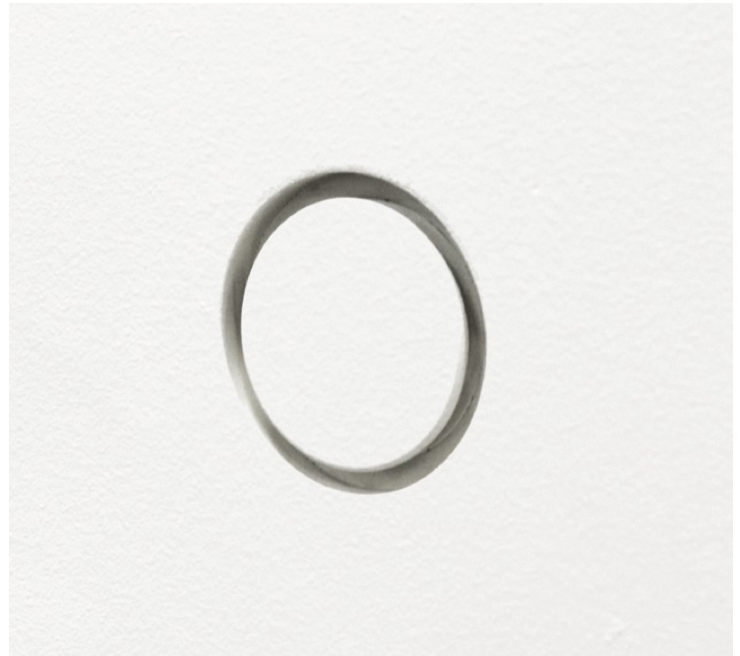
- Mount in-wall remote sensors completely flush with drywall
- Pre-construction mounting kit provides rough-in for wiring and sensor during construction
- Compatible with Crestron® [CHV-RTS](#), [CHV-RTHS](#), [C2N-RTHS](#), and [GLS-OIRLCL-C-CN](#) in-wall sensors (all sold separately)
- Optional surface mount with a flat, paintable, escutcheon ring (supplied)

The [MMK-RS](#) pre-construction mounting kit is designed for installation during the rough-in stage of construction to simplify wiring and sensor positioning. The mounting kit also provides the ability to completely flush mount a sensor to make it virtually hidden on a wall. Depth adjustments allow the MMK-RS to be installed in wall surfaces that are up to 3 in. (77 mm) thick.

The mounting kit includes an escutcheon ring that allows for sensor mounting in non-drywall installations. Additionally, the escutcheon ring can be used in drywall applications where a flush installation is not required.

The MMK-RS is compatible with the [CHV-RTS](#), [CHV-RTHS](#), [C2N-RTHS](#), and [GLS-OIRLCL-C-CN](#) in-wall remote sensors (all sold separately).

Flush Mount Sensor Installation on Finished, Painted Drywall



Specifications

Device Compatibility

In-Wall Sensors	Compatible with CHV-RTS , CHV-RTHS , C2N-RTHS , and GLS-OIRLCL-C-CN sensors; Sensors all sold separately
------------------------	--

Construction

Material	White ABS plastic mounting block with two ABS plastic mounting brackets; Red ABS plastic mud shield protects opening and provides reference point to stop sanding, provides cable tie off point
Mounting	New construction mount; Secures to 2 in. x 4 in. (minimum) framing, vertical stud or horizontal blocking; Integrated center marks; Requires 3.25 in. (83 mm) of free space behind bracket for mounting legs, wiring, and sensor; Mounts in wall surfaces up to 3 in. (77 mm) thick; Flush Mount in drywall using drywall mud, sensor does not protrude from wall surface; Surface mount in non-drywall installations using paintable escutcheon ring, sensor and escutcheon ring protrudes ~1/8 in. (3 mm) from wall surface

MMK-RS

Remote Device Mount for Crestron® In-Wall Sensors

Dimensions

Height	4.01 in. (102 mm)
Width	4.01 in. (102 mm)
Depth	3.66 in. (93 mm) with brackets installed; 0.56 in. (15 mm) without brackets

Weight

7.56 oz (214 g)

Compliance

Intertek® Listed for US and Canada

Model

MMK-RS

Remote Device Mount for Crestron® In-Wall Sensors

This product may be purchased from select authorized Crestron dealers and distributors. To find a dealer or distributor, please contact the Crestron sales representative for your area. A list of sales representatives is available online at www.crestron.com/How-To-Buy/Find-a-Representative or contact us for additional information by visiting www.crestron.com/contact/our-locations for your local contact.

The original language version of this document is U.S. English. All other languages are a translation of the original document.

The product warranty can be found at www.crestron.com/warranty.

The specific patents that cover Crestron products are listed online at www.crestron.com/legal/patents.

Certain Crestron products contain open source software. For specific information, please visit www.crestron.com/opensource.

Crestron and the Crestron logo are either trademarks or registered trademarks of Crestron Electronics, Inc. in the United States and/or other countries. Intertek is either a trademark or registered trademark of Intertek Testing Services NA in the United States and/or other countries. Other trademarks, registered trademarks, and trade names may be used in this document to refer to either the entities claiming the marks and names or their products. Crestron disclaims any proprietary interest in the marks and names of others. Crestron is not responsible for errors in typography or photography.

Specifications are subject to change without notice.

©2024 Crestron Electronics, Inc.

Rev 01/29/24

MMK-RS

Remote Device Mount for Crestron® In-Wall Sensors

