

Your RoomView™ server has arrived!

The Crestron RoomView® server provides a simple and effective way to add RoomView to your environment.

1. Carefully open the box the server was shipped in and unpack the unit and the rest of the contents.



2. Inspect everything that came in the box to ensure that nothing is damaged or missing. You should have:

- Your RoomView Rack Server (a one rack unit Dell Server)
- Power cord, software and documentation from Dell
- Dell ReadyRails™
- A CD with all of your Crestron software and documentation

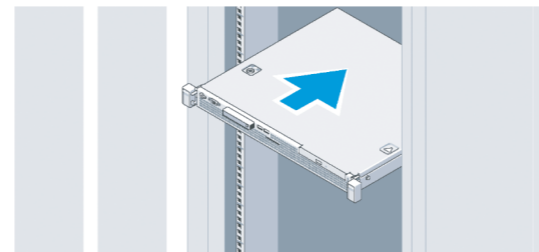


3. Review all of the documentation.



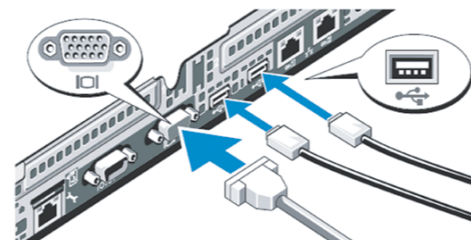
4. Attach the included ReadyRails static rail system to your rack system as described in the Dell PowerEdge R310 Technical Guide.

5. Slide the server into the ReadyRails until it clicks into place.

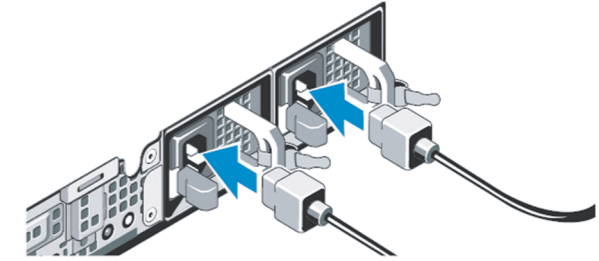


NOTE: The operating temperature of the rack should be between 50° to 95°F (10° to 35°C) with 20 to 80% relative humidity (non-condensing). Temperature gradation should be limited to 50°F (10°C) per hour and humidity gradation should be limited to 10% per hour.

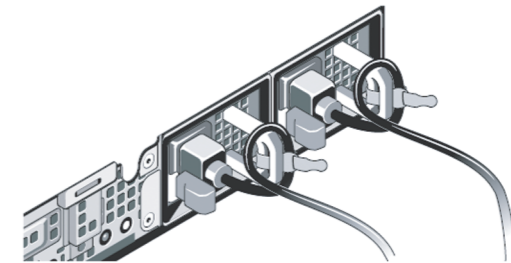
6. Attach a monitor, mouse, keyboard and network cable (not provided).



7. Connect the power cable(s) to the server.

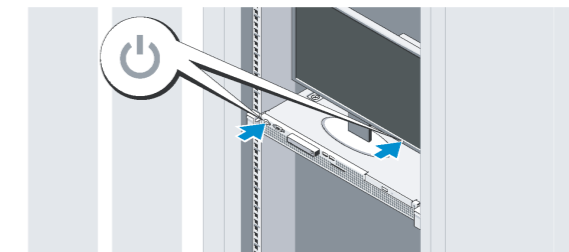


8. Secure the power cable(s) to avoid tangled wires and possible disconnection.



9. Plug the power cable(s) into suitably powered and grounded electrical supplies. An uninterruptable power supply (UPS) or power distribution unit is recommended.

10. Press the power button on the server as well as the power button on the attached monitor.



11. Download and install the latest Windows® updates.

12. To attach the server to your domain, follow steps 1 through 9 of this TechNet article:

[http://technet.microsoft.com/en-us/library/cc770919\(ws.10\).aspx](http://technet.microsoft.com/en-us/library/cc770919(ws.10).aspx)



CAUTION: Changing the default name of the RoomView server may cause the installed Microsoft® SQL Server® to stop running.

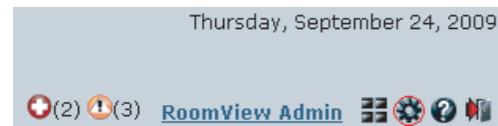
NOTE: The following login credentials are required: The Windows username is: administrator, the password is Roomview1. The SQL administrator username is: sa, the password is Roomview1. The RoomView username is: Admin, the password is Admin.

Basic Setup: How to Add Rooms and Assets

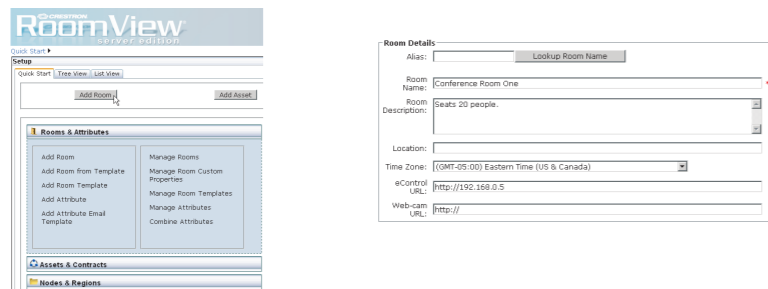
These procedures assume that RoomView Server Edition has been properly installed and configured on your system(s) and that you will be connecting to a processor running the demo program when you add a room as described in this guide. For more information refer to the latest version of the RoomView Server Edition Installation Guide (Doc. 6543), which can be downloaded from the Crestron Web site (www.crestron.com/manuals).

Adding a Room in RoomView

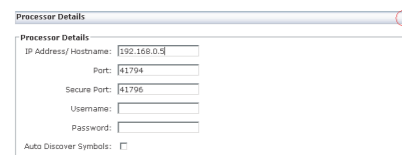
1. Log into RoomView.
2. Click the gear-shaped **Setup** icon (circled in red below) at the top right of the main "RoomView" window.



3. Click on the **Add Room** button and enter information into the field as required by the red asterisk.

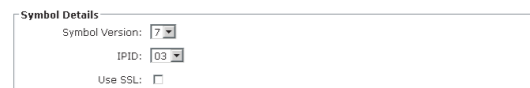


4. Enter the optional information, such as time zone, e-Control and webcam urls, as desired.
5. Click the Processor Details control (circled in red) to expand the *Processor Details* and *Symbol Details* fields. Enter the processor details appropriate to your installation as shown in the following figure.

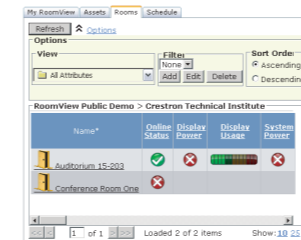
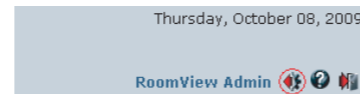


NOTE: If the **Auto Discover Symbols** checkbox is selected and your symbol in the control program is a version 7.2 or higher, RoomView's auto discovery feature will automatically import the symbol's information into the RoomView database.

6. Select the Symbol version and IPID. Note that the demo program has a RoomView Express/RoomView 6.0 symbol at IPID 03 and a RoomView SE/RoomView 7.2 (RoomView SE/RoomView 7.0) symbol at IPID 05.

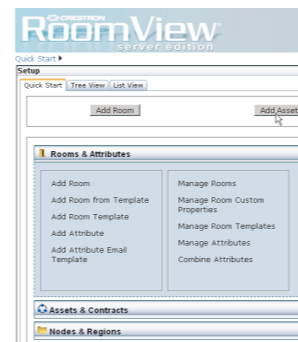


7. Associate your room with an appropriate node in the *Associate with a Node* field at the upper right.
8. Click the **Update** button and then **Close** to commit your choices. Exit setup by clicking on the exit **Setup** icon (circled in red below left) and click on the *Rooms* tab at the top of the window to see the new room in the "Status" window.

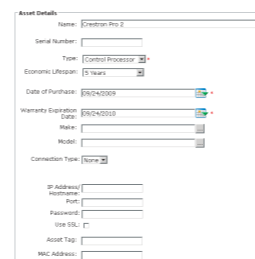


Adding an Asset in RoomView

1. Click the **Setup** icon at the top right of the main "RoomView" window.
2. Click the **Add Asset** button.



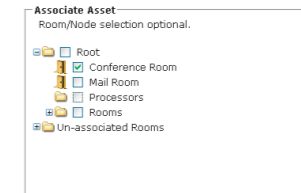
3. Enter information into the fields indicated as required by the red asterisks.



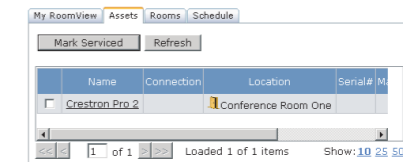
4. Enter the optional information in the *IP Address and Port*, *Password*, *SSL*, *Asset Tag*, *MAC Address* and *Custom Properties* fields.
5. Enter the maintenance details for the asset.



6. Associate the asset with a room or a node by clicking in the appropriate check boxes in the *Associate Asset* field.

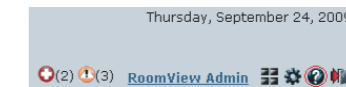


7. Click **Update** and then **Close** to commit your choices. Exit setup and click on the *Assets* tab at the top of the window to see the new asset in the "Status" window.



For More Information

For more information on these and other procedures in RoomView Server Edition, please consult the embedded help by clicking the Help icon (circled in red below) at the upper right of the RoomView interface:



If you cannot locate specific information or have questions after reviewing this guide, please take advantage of Crestron's award winning customer service team by calling the Crestron corporate headquarters at 1-888-CRESTRON [1-888-273-7876]. For assistance in your region, please refer to the Crestron Web site (www.crestron.com) for a listing of Crestron worldwide offices.

You can also log onto the online help section of the Crestron Web site (<http://www.crestron.com/onlinehelp>) to ask questions about Crestron products. First-time users will need to establish a user account to fully benefit from all available features.

Crestron, the Crestron logo, Crestron RoomView and RoomView are trademarks or registered trademarks of Crestron Electronics, Inc. in the United States and other countries. ReadyRails is either a trademark or registered trademark of Dell Inc., in the United States and/or other countries. Microsoft, SQL Server and Windows are trademarks or registered trademarks of Microsoft Corporation in the United States and/or other countries. Other trademark and trade names may be used in this document to refer to either the entities claiming the marks and names or their products. Crestron disclaims proprietary interest in the marks and names of others.

©2011 Crestron Electronics, Inc.