

Crestron **TPSBLOCK-10**
10-Position RJ45 Panel Mount Interface

Installation Guide



CRESTRON

This document was prepared and written by the Technical Documentation department at:



Crestron Electronics, Inc.
15 Volvo Drive
Rockleigh, NJ 07647
1-888-CRESTRON

Contents

10-Position RJ45 Panel Mount Interface: TPSBLOCK-10	1
Introduction.....	1
Industry Compliance.....	3
Installation.....	3
Custom Adapter Plates.....	5
Further Inquiries.....	6
Return and Warranty Policies	7
Merchandise Returns / Repair Service.....	7
CRESTRON Limited Warranty	7

10-Position RJ45 Panel Mount Interface: TPSBLOCK-10

Introduction

The TPSBLOCK-10 is a 10-position RJ45 panel mount interface for Crestron Isys™ tilt touchpanels. The TPSBLOCK-10 is an electrically and magnetically shielded 10-position, female RJ45 connector mounted on a printed circuit board (PCB) and a 10-foot cable with a 10-position RJ45 plug (male).

This interface is designed to provide a lengthy 10-foot connection between the NET/VIDEO or RGB output from the TPS-IMC tucked away in a cabinet or under a table to the Isys touchpanel, which is available to the user. When installed into a panel or desktop pop-up/tilt-up device, the TPSBLOCK-10 provides local access by extending the touchpanel NET/VIDEO port and/or RGB port(s). The RGB port may be interfaced only when the touchpanel is equipped with an optional TPS-XVGA-BV RGB Computer Interface Card with Balanced Video. To interface the touchpanel NET/VIDEO and RGB ports, two TPSBLOCK-10s must be utilized.

Functional Summary

- Handy 10-pin male connector and 10-foot cable interface solution for Isys™ TPS-Series advanced touchpanels
- Easy mounting into a standard Extron/Altinex/Inline type interface plate
- Plug-in socket for the “ship-with” Net/Video or RGB cable from a TPS-Series touchpanel

The touchpanel NET/VIDEO or RGB cable (supplied with the touchpanel) is connected to the female connector of the TPSBLOCK-10 and the TPSBLOCK-10 plug is connected to the Cresnet control system (via Crestron TPS interface module or optional TPS wall-mounted

interface module). Refer to the table below for touchpanel and interface modules that are used with the TPSBLOCK-10.

TPSBLOCK-10 Interface Applications

ISYS™ TOUCHPANEL	INTERFACE MODULE	MODULE AVAILABILITY	MODULE DOC. #	TPSBLOCK-10 INTERFACE
TPS-4500	TPS-4500IMC	Supplied w/touchpanel	5890	NET/VIDEO only
	TPS-4500IMW	Sold Separately	5913	NET/VIDEO only
TPS-5000 & TPS-6000	TPS-IMC	Supplied w/touchpanel	5856	NET/VIDEO only
	TPS-IMC-BV	Sold Separately *	5921	NET/VIDEO or RGB
	TPS-IMW	Sold Separately	5857	NET/VIDEO only

* The TPS-IMC-BV is supplied with the optional TPS-XVGA-BV card that can only be installed into specific touchpanels. Refer to the TPS-XVGA-BV Operations & Installation Guide for further information.

NOTE: For more information about the Crestron TPS interface or wall-mounted interface module(s), refer to the latest revision of the appropriate operations guide. The latest version can be obtained from the Downloads | Product Manuals section of the Crestron website (www.crestron.com).

Refer to the table below for the pinouts of the TPSBLOCK-10 connector during NET/VIDEO and RGB applications. Pin 1 of the female connector is wired to pin 1 of the plug.

Connector/Plug Pinouts

PIN	NET/VIDEO		RGB
	DESIGNATION	DESCRIPTION	DESCRIPTION
1 *	+24V	Power (Network)	Vertical sync -
2	GND	Ground (Network)	Horizontal sync -
3	C+	Chrominance (Positive)	RED video -
4	C-	Chrominance (Negative)	RED video +
5	Y	Data (Network)	GREEN video -
6	Z	Data (Network)	GREEN video +
7	Y+	Luminance (Positive)/Composite	BLUE video -
8	Y-	Luminance (Negative)/Composite	BLUE video +
9	GND	Ground (Network)	Horizontal sync +
10	+24V	Power (Network)	Vertical sync +

* While facing the female connector of the TPSBLOCK-10, pin 1 is located at the upper-left of the connector.

Peel-and-stick NET/VIDEO and RGB labels are supplied with the TPSBLOCK-10. If desired, a label may be affixed to the surface of the panel or desktop pop-up/tilt-up device. A matching AUDIO label is also supplied for use with non-Crestron 8-position RJ45 interface devices.

Industry Compliance

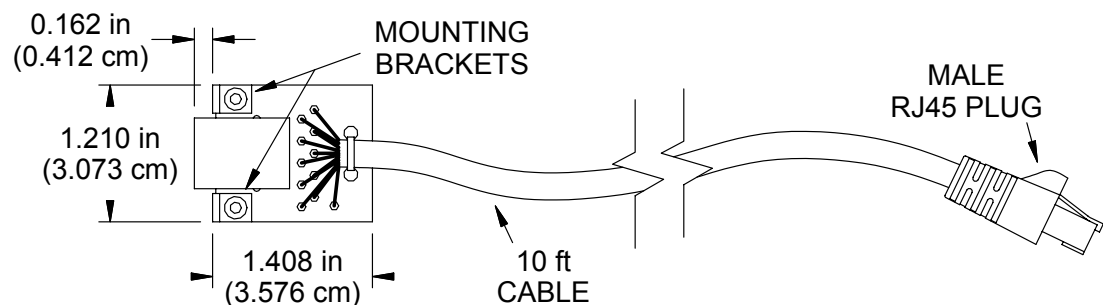
As of the date of manufacture, the TPSBLOCK-10 have been tested and found to comply with specifications for CE marking and standards per EMC and Radiocommunications Compliance Labelling (N11785).



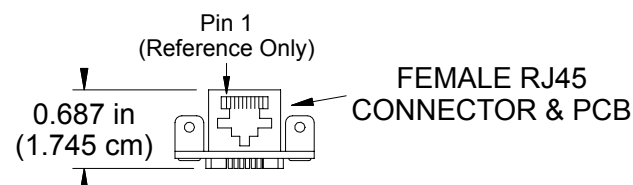
Installation

The items required for installation of the TPSBLOCK-10 are appropriate cutting tools to create the rectangular cut-out area in the panel or desktop pop-up/tilt-up device, a **0.136-inch** (#29 or approximately 9/64-inch) drill bit, electric drill and two #4-40 screws of adequate length with an appropriate screwdriver. Refer to the following diagrams and perform the procedure that begins on the next page.

Overhead View



Front View



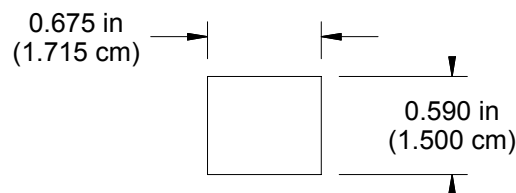
NOTE: The recommended clearance on each **side** of the rectangular cutout area is approximately 0.268 in (0.681 cm). The clearance at the **bottom** of the cutout area should be approximately 0.180 in (0.457 cm). The clearance **above** the cutout area is zero.

NOTE: If affixing a NET/VIDEO or RGB label near the TPSBLOCK-10 (above or below is recommended), a 0.200 in (0.508 cm) by 0.700 in (1.778 cm) area is required.

NOTE: Extron has made available Architectural Adapter Plates (AAPs) for mounting the TPSBLOCK-10 for Cresnet touchpanel connection. Refer to “Custom Adapter Plates” on page 5 for details. If using AAPs, skip steps 2 and 3 in the subsequent procedure.

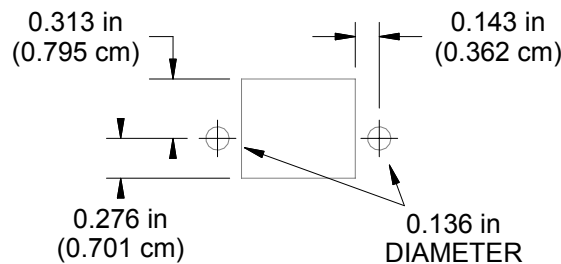
1. On the panel or desktop pop-up/tilt-up device, determine an adequate location for the TPSBLOCK-10.
2. Refer to the diagram below. Using the proper tools, cut-out and remove the rectangular area from the panel or desktop pop-up/tilt-up device.

TPSBLOCK-10 Installation (1 of 3) - Cutout Diagram



3. Refer to the diagram below. Using an electric drill and **0.136-inch** (#29 or approximately 9/64-inch) drill bit, drill two TPSBLOCK-10 mounting holes.

TPSBLOCK-10 Installation (2 of 3) - Mounting Hole Diagram

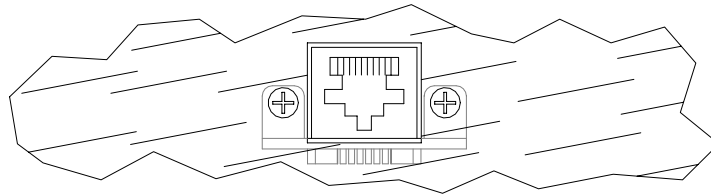


4. At the inner surface of the panel or desktop pop-up/tilt-up device, position the female connector of the TPSBLOCK-10

into the cutout area and align the drilled mounting holes with the TPSBLOCK-10 mounting brackets.

5. Refer to the diagram below. At the outer surface of the panel or desktop pop-up/tilt-up device, loosely install two **#4-40** screws of adequate length (not supplied) through the surface into the TPSBLOCK-10 mounting brackets. Tighten screws to **finger-tight** then, using an appropriate screwdriver, tighten to a torque that is adequate for the surface material.

TPSBLOCK-10 Installation (3 of 3) - Secure TPSBLOCK-10

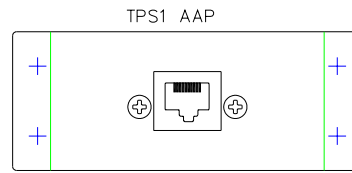


6. Connect the **male** RJ45 plug of the TPSBLOCK-10 cable to the **NET/VIDEO or RGB** port of the TPS interface module or TPS wall-mounted interface module.
7. If desired, peel the appropriate NET/VIDEO or RGB label (supplied) from the paper backing and affix to the surface of the panel or desktop pop-up/tilt-up device near (above or below is recommended) the TPSBLOCK-10.
8. At the outer surface of the panel or desktop pop-up/tilt-up device, connect the touchpanel NET/VIDEO or RGB cable (supplied with touchpanel) to the **female** RJ45 connector of the TPSBLOCK-10.

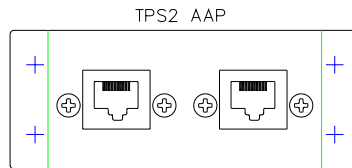
Custom Adapter Plates

Extron Architectural Adapter Plates (AAPs), shown on the next page, are available for mounting Crestron TPSBLOCK-10 for touchpanel connection. These two-space AAPs allow the mounting of one or two TPSBLOCK-10 interfaces. The AAPs must be ordered separately from Extron; consult the Extron website (www.extron.com) for specifications and ordering details.

Extron Architectural Adapter Plates (AAPs)



70-195-01,11,21,51

2 space AAP panel
Single connector

70-196-02,12,22,52

2 space AAP panel
Double connector

Further Inquiries

If after reviewing this Installation Guide, you cannot locate specific information or have questions, please take advantage of Crestron's award winning customer service team by calling:

- In the US and Canada, call Crestron's corporate headquarters at 1-888-CRESTRON [1-888-273-7876] or 1-201-767-3400.
- In Europe, call Crestron International at +32-15-50-99-50.
- In Asia, call Crestron Asia at +852-2341-2016.
- In Latin America, call Crestron Latin America at +5255-5093-2160.
- In Australia and New Zealand, call Creston Pacific at +613-9480-2999.

Return and Warranty Policies

Merchandise Returns / Repair Service

1. No merchandise may be returned for credit, exchange, or service without prior authorization from CRESTRON. To obtain warranty service for CRESTRON products, contact the factory and request an RMA (Return Merchandise Authorization) number. Enclose a note specifying the nature of the problem, name and phone number of contact person, RMA number, and return address.
2. Products may be returned for credit, exchange, or service with a CRESTRON Return Merchandise Authorization (RMA) number. Authorized returns must be shipped freight prepaid to CRESTRON, Cresskill, N.J., or its authorized subsidiaries, with RMA number clearly marked on the outside of all cartons. Shipments arriving freight collect or without an RMA number shall be subject to refusal. CRESTRON reserves the right in its sole and absolute discretion to charge a 15% restocking fee, plus shipping costs, on any products returned with an RMA.
3. Return freight charges following repair of items under warranty shall be paid by CRESTRON, shipping by standard ground carrier. In the event repairs are found to be non-warranty, return freight costs shall be paid by the purchaser.

CRESTRON Limited Warranty

CRESTRON ELECTRONICS, Inc. warrants its products to be free from manufacturing defects in materials and workmanship under normal use for a period of three (3) years from the date of purchase from CRESTRON, with the following exceptions: disk drives and any other moving or rotating mechanical parts, pan/tilt heads and power supplies are covered for a period of one (1) year; touchscreen display and overlay components are covered for 90 days; batteries and incandescent lamps are not covered.

This warranty extends to products purchased directly from CRESTRON or an authorized CRESTRON dealer. Purchasers should inquire of the dealer regarding the nature and extent of the dealer's warranty, if any.

CRESTRON shall not be liable to honor the terms of this warranty if the product has been used in any application other than that for which it was intended, or if it has been subjected to misuse, accidental damage, modification, or improper installation procedures. Furthermore, this warranty does not cover any product that has had the serial number altered, defaced, or removed.

This warranty shall be the sole and exclusive remedy to the original purchaser. In no event shall CRESTRON be liable for incidental or consequential damages of any kind (property or economic damages inclusive) arising from the sale or use of this equipment. CRESTRON is not liable for any claim made by a third party or made by the purchaser for a third party.

CRESTRON shall, at its option, repair or replace any product found defective, without charge for parts or labor. Repaired or replaced equipment and parts supplied under this warranty shall be covered only by the unexpired portion of the warranty.

Except as expressly set forth in this warranty, CRESTRON makes no other warranties, expressed or implied, nor authorizes any other party to offer any other party to offer any warranty, including any implied warranties of merchantability or fitness for a particular purpose. Any implied warranties that may be imposed by law are limited to the terms of this limited warranty. This warranty statement supercedes all previous warranties.

Trademark Information

All brand names, product names, and trademarks are the sole property of their respective owners. Windows is a registered trademark of Microsoft Corporation. Windows95/98/Me and WindowsNT/2000 are trademarks of Microsoft Corporation.



Crestron Electronics, Inc.
15 Volvo Drive Rockleigh, NJ 07647
Tel: 888.CRESTRON
Fax: 201.767.7576
www.crestron.com

Installation Guide - DOC. 5979A
08.02

Specifications subject to
change without notice.