

CEN-WAP-ABG-1G

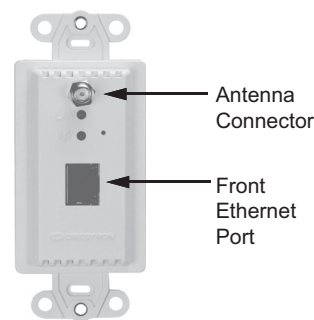
One-Gang 802.11a/b/g Wireless Access Point

1 Introduction

The CEN-WAP-ABG-1G is a wireless access point that supports IEEE 802.11a/b/g Wi-Fi technology. In addition, the CEN-WAP-ABG-1G supports the IEEE 802.3af Power over Ethernet (PoE) industry standard. Using PoE technology, the CEN-WAP-ABG-1G receives both power and data by way of a single Ethernet cable.

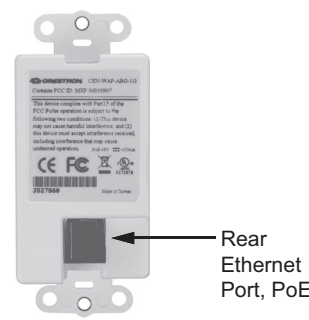
Shipped with uniquely configured network identification settings, the CEN-WAP-ABG-1G provides a secure wireless connection for Crestron® Wi-Fi touchpanels. As a result, additional configuration of the access point is not required as part of the installation. To accommodate applications in which customized configuration settings are desired, the access point also provides a Web-based configuration utility that offers a setup wizard as well as additional network management settings.

Front View



Antenna Connector
Front Ethernet Port

Rear View



Rear Ethernet Port, PoE

LED Indicators (Front of Unit)

INDICATOR	DESCRIPTION
LAN	Solid green indicates that the rear Ethernet port has established a valid Ethernet connection. Flashing green indicates Ethernet activity through the rear Ethernet port.
Wi-Fi	Solid green indicates that a wireless network connection has been established. Flashing green indicates wireless data activity.
AMBER LED	Amber indicates that the front Ethernet port has established a 100 Mbps Ethernet connection.
GREEN LED	Solid green indicates that the front Ethernet port has established a valid Ethernet connection. Flashing green indicates Ethernet activity through the front Ethernet port.

2 Installing the Access Point

Before installing the access point, note the following:

- The access point must be installed in a temperature-controlled environment ranging from 32° to 104° F (0° to 40° C).
- Do not remove the sticker that is attached to the front of the access point. You will need the information provided on the sticker if you perform the steps in section 3 of this guide.

MOUNTING

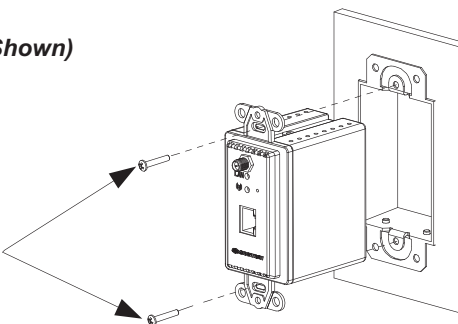
Mount the access point into a wall or into a rack as appropriate for your installation.

Wall Mounting: For the best possible range, it is recommended that you mount the access point as high as possible and away from metal objects.

1. Using the two supplied Phillips pan head screws, mount the access point into a one-gang low-voltage bracket or electrical box. The recommended depth of the electrical box is a minimum of 2.5 inches. The maximum voltage of the access point is 48 VDC.
2. Attach the desired Decora® faceplate (not supplied).

Wall Mounting (Low-Voltage Bracket Shown)

#6-32 x 3/4" Phillips Pan Head Screws



Rack Mounting: The access point mounts horizontally into a 19-inch rack and occupies 1U (1.75 inches) of rack space. For the best possible range, it is recommended that you mount the unit into the topmost rack space.

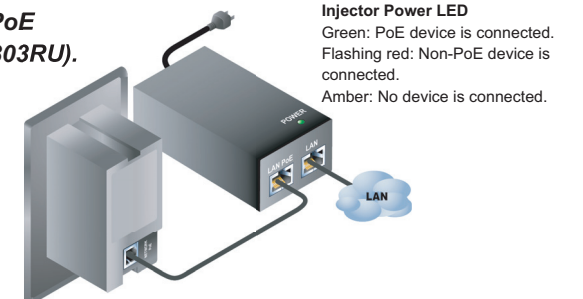
To mount the access point, use the Middle Atlantic HBL1-722243 rack mount panel. For ordering information, contact Middle Atlantic Products, Inc. (<http://www.middleatlantic.com>).

CONNECTIONS

Power and Network Connection, Rear Ethernet Port: Depending on the equipment you have purchased, connect the access point to a Crestron PoE injector, a Crestron PoE switch, or a third-party 802.3af compliant power source.

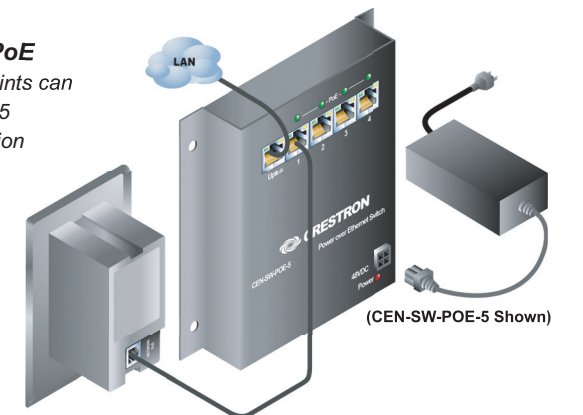
Connection to Crestron PoE Injector (Part No. PWE-4803RU).

For information about the PoE injector, refer to the latest version of the PWE-4803RU PoE Injector Installation Guide (Doc. 6712), which is available from the Crestron website (www.crestron.com/manuals).



Connection to Crestron PoE Switch.

Up to four access points can connect to the CEN-SW-POE-5 switch. For additional information about the switch, refer to the latest version of the CEN-SW-POE-5 Switch Installation Guide (Doc. 6694).



Connection to Third-Party 802.3af Power Source. Refer to the documentation supplied with the third-party device for installation information.

Antenna Connection:

Screw the supplied antenna onto the access point.



Network Connection, Front Ethernet Port (Optional):

Connect local wired Ethernet equipment to the front Ethernet port.

CEN-WAP-ABG-1G

One-Gang 802.11a/b/g Wireless Access Point

3 Connecting to a Crestron Wi-Fi Touchpanel

NOTE: If you wish to connect Crestron Wi-Fi touchpanels to the CEN-WAP-ABG-1G using the unique preconfigured settings of the access point, refer to the information provided in this section. If, however, you wish to customize the configuration settings of the access point, skip this section and proceed to section 4.

Before beginning the steps to connect a touchpanel to the access point, you must know the unique **network name (SSID)** and **network key** that have been assigned to the access point at the factory. Locate this information on the sticker that is attached to the front of the unit.

Sample Sticker (Front of Access Point)

Network Name:
Crestron-08a24d
Key: 18AC439265

To connect a touchpanel to the access point, refer to the general guidelines below and, if necessary, to the manual supplied with the touchpanel for details. An example connecting the TPMC-8X to the access point is provided to the right.

- Access the setup screen of the touchpanel.
- Navigate to the window that allows you to select a wireless network. Select the network name, which matches the network name on the sticker attached to the access point.
- Enter the 10-character network key that appears on the sticker. Note that the network key is not case sensitive.
- From the setup screen, navigate to the window that allows you to enable communication between the touchpanel and the control system. Select the IP ID of the touchpanel and enter the IP address of the control system.
- To verify touchpanel connectivity to the WAP, observe the signal strength on the touchpanel setup screen as you move the touchpanel to the perimeters of the intended usage area. The signal strength should be greater than 50 percent.

After all devices are connected to the network, it is recommended that you remove the sticker on the front of the access point to ensure network security.

Example of Touchpanel Connectivity to the Access Point (TPMC-8X Shown)

A. Access the setup screen.

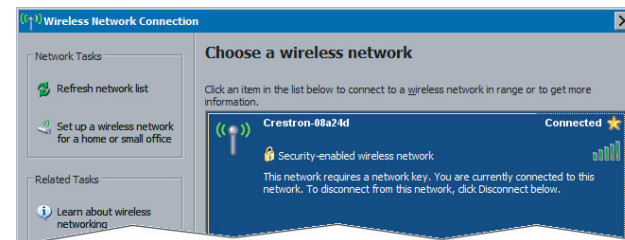


TPMC-8X Setup Screen (Upper Portion)

B. Navigate to the window that allows you to select a wireless network:

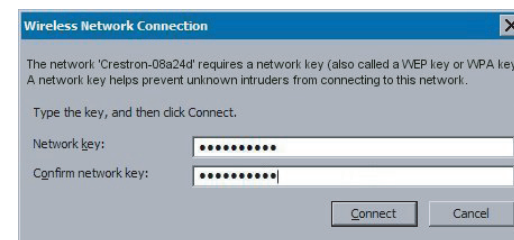
- On the setup screen, press the **Adapters** button to open the "Ethernet Setup" window.
- Click **Configure** to open the "Wireless Network Connection Properties" window.
- Click the **Wireless Networks** tab.
- Click **View Wireless Networks** to view the "Wireless Network Connection" window.
- Select the network name provided on the access point sticker, and then click **Connect**.

Network name matches name on access point sticker, for example, Crestron-08a24d.



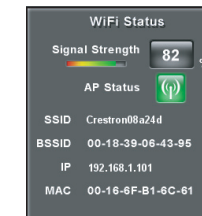
C. In the "Wireless Network Connection" (Network Key) window, enter and confirm the network key. Click **Connect**.

Network key matches key on access point sticker and is displayed as solid black circles as you type.



- Enable communication between the touchpanel and the control system:
 - On the setup screen, press the **IP Table** button.
 - In the "IP Table Setup" window, add the IP ID of the touchpanel and the IP address of the control system.
- On the setup screen, observe the Wi-Fi status as you move the touchpanel to the perimeters of the intended usage area. Ensure that the signal strength is greater than 50 percent and that the AP Status icon remains green.

TPMC-8X Setup Screen (WiFi Status)



4 Configuring the Access Point

NOTE: Configure the access point only if customized configuration settings are required.

- Connect a PC to the same network as the access point.
- Open Crestron Toolbox.
- From the **Tools** menu, select **Device Discovery Tool**.
- Select **CEN-WAP-ABG-1G**. The "Password" window opens.
- Enter the default login *admin* and the default password *admin*.
- Do either of the following:
 - Use the *Setup Wizard* mode to select a scenario—such as a stand-alone network or a high security network—for configuration.
 - Configure all parameters using the *Custom Settings* mode.

For details, refer to the latest version of the CEN-WAP-ABG-1G Operations & Installation Guide (Doc. 6695).