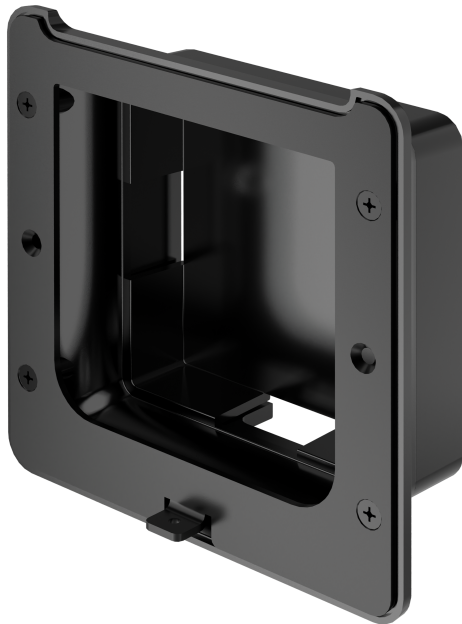


TSS-470E-MSMK-B-T

Multisurface Mount Kit for TSS-470E, Black Textured



- *Permits flush mounting a TSS-470E touch screen to virtually any flat, smooth surface*
- *Ideal for mounting at the entrance to a hoteling space for desk scheduling applications*
- *Supports glass surface and partition mounting*
- *Secure, screwless installation using the peel-and-stick adhesive rear housing*
- *Security screw provided to prevent unauthorized removal of the touch screen*
- *Available in black textured finish*

The [TSS-470E-MSMK-B-T](#) multisurface mount kit provides a versatile surface mounting solution for a [TSS-470E-B-T](#) desk scheduling touch screen. Using the multisurface mount kit, the touch screen can be mounted directly to glass, granite, marble, wood paneling, plaster, smooth masonry, or virtually any other flat surface. The TSS-470E-MSMK-B-T is ideal for mounting at the entrance to a hoteling space for desk scheduling applications.

The TSS-470E-MSMK attaches securely to a flat, smooth surface without screws using the included peel-and-stick adhesive rear housing. For a finished appearance when mounted to a transparent glass wall, an adhesive rear label is provided, which simply affixes to the opposite side of the glass behind the unit. A template is provided for the MSMK to help ensure that it is level and properly aligned with the surface. A security screw is also provided to prevent unauthorized removal of the touch screen from the MSMK.

The TSS-470E-MSMK rear housing provides four cutout holes (on the top, bottom, and sides of the housing) for running concealed cables to the touch screen using adhesive-backed raceway (not included). A trim ring with an opening for the raceway is attached to the rear housing to conceal any unused cutouts.

Specifications

Construction

Housing	Plastic, textured black finish
Surface Mounting	Peel-and-stick adhesive mounting to glass or other flat, smooth surface

Dimensions

Height	3.95 in. (100 mm)
Width	3.95 in. (100 mm)
Depth	1.80 in. (46 mm); 1.99 in. (51 mm) with touch screen installed

Weight

2.2 oz (64 g)

Model

TSS-470E-MSMK-B-T

Multisurface Mount Kit for TSS-470E, Black Textured

This product may be purchased from select authorized Crestron dealers and distributors. To find a dealer or distributor, please contact the Crestron sales representative for your area. A list of sales representatives is available online at www.crestron.com/How-To-Buy/Find-a-Representative or contact us for additional information by visiting www.crestron.com/contact/our-locations for your local contact.

The original language version of this document is U.S. English. All other languages are a translation of the original document.

The product warranty can be found at www.crestron.com/warranty.

The specific patents that cover Crestron products are listed online at www.crestron.com/legal/patents.

Certain Crestron products contain open source software. For specific information, please visit www.crestron.com/opensource.

Crestron and the Crestron logo are either trademarks or registered trademarks of Crestron Electronics, Inc. in the United States and/or other countries. Other trademarks, registered trademarks, and trade names may be used in this document to refer to either the entities claiming the marks and names or their products. Crestron disclaims any proprietary interest in the marks and names of others. Crestron is not responsible for errors in typography or photography.

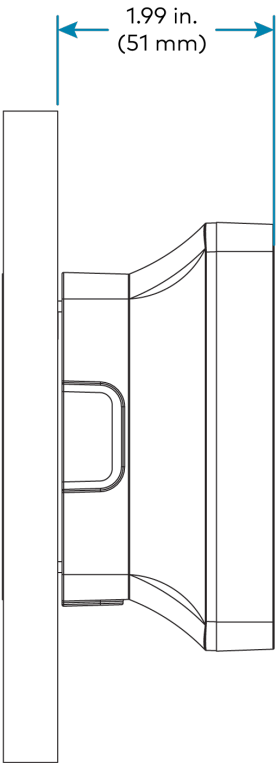
Specifications are subject to change without notice.

©2023 Crestron Electronics, Inc.

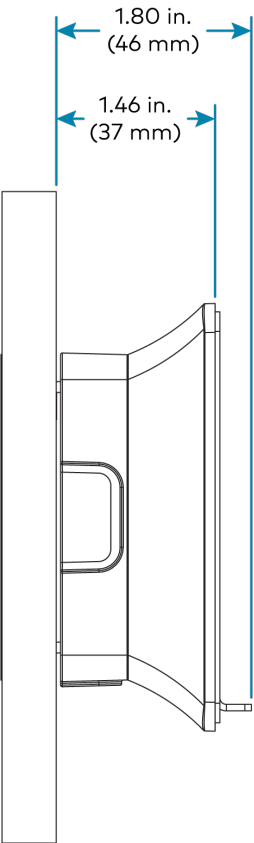
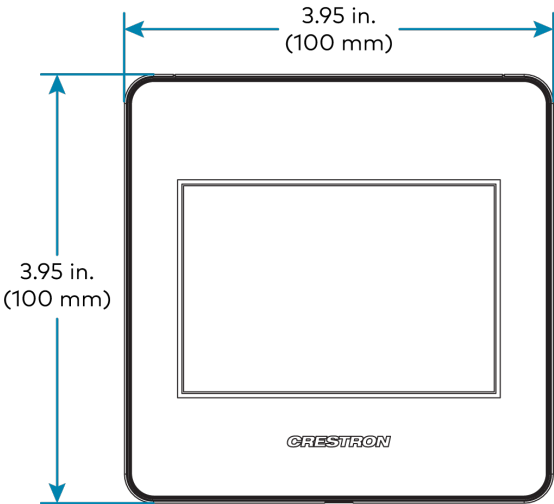
Rev 08/31/23

TSS-470E-MSMK-B-T

Multisurface Mount Kit for TSS-470E, Black Textured



TSS-470E-MSMK-B-T (with touch screen)



TSS-470E-MSMK-B-T (without touch screen)

