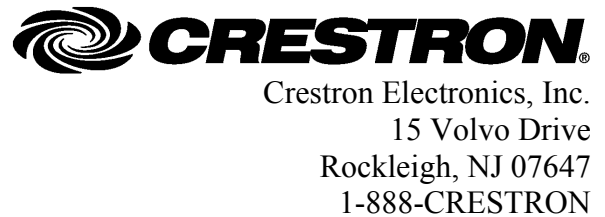


Crestron **TPMC-8X-DSW**
Bezel Conversion Kit

Installation Guide



This document was prepared and written by the Technical Documentation department at:



Contents

Bezel Conversion Kit: TPMC-8X-DSW	1
Introduction	1
Setup	2
Identifying the Bezels	2
Supplied Hardware	3
Installation	3
Resources	7
Reference Documents	7
Further Inquiries	7
Future Updates	7
Return and Warranty Policies	8
Merchandise Returns / Repair Service	8
CRESTRON Limited Warranty	8

Regulatory Compliance

As of the date of manufacture, the TPMC-8X-DSW Bezel Conversion Kit has been tested and found to comply with specifications for CE marking and standards per EMC and Radiocommunications Compliance Labelling.



Crestron, the Crestron logo and Isys are trademarks or registered trademarks of Crestron Electronics, Inc. in the United States and other countries. Other trademarks, registered trademarks and trade names may be used in this document to refer to either the entities claiming the marks and names or their products. Crestron disclaims any proprietary interest in the marks and names of others.

©2011 Crestron Electronics, Inc.

Bezel Conversion Kit: TPMC-8X-DSW

Introduction

The Crestron® TPMC-8X-DSW Bezel Conversion Kit is an upgrade for the TPMC-8X-DSW Wall Mount Docking Station that provides compatibility with TPMC-8X-GA touch panels. It is also fully compatible with TPMC-8X touch panels.

For more information on the TPMC-8X-GA or TPMC-8X touch panels, refer to the latest version of the TPMC-8X-GA Isys™ 8.4" WiFi Touch Panel Operations Guide (Doc. 7078A) or the TPMC-8X Isys 8.4" WiFi Touch Panel Operations Guide (Doc. 6539). Both are available from the Crestron Web site (www.crestron.com/manuals).

Setup

Identifying the Bezels

The TPMC-8X-DSW Bezel Conversion Kit includes a new bezel.

Original TPMC-8X-DSW Bezel



In the illustration below, note the deeper indent in the ridge near the top of the new bezel, to accommodate TPMC-8X-GA touch panels. In addition, the button that senses the presence of a touch panel in the docking station has been moved to the right of the hole for the right side screw.

New TPMC-8X-DSW Bezel



Supplied Hardware

The hardware supplied with the TPMC-8X-DSW Bezel Conversion Kit is listed in the following table.

Supplied Hardware for the TPMC-8X-DSW Bezel Conversion Kit

DESCRIPTION	PART NUMBER	QUANTITY
Screw, 3 mm x 6 mm	2018276	2
Interconnect Cable with Transparent Window Butt Splice Connectors	2029705	1
Rubber Cap	2029706	2

Installation

The following tools are required to install the TPMC-8X-DSW Bezel Conversion Kit:

- Small Philips screwdriver
- Small slot screwdriver or needle nose pliers (for removing plugs)
- Wire cutter
- Wire stripper
- 26 AWG crimping tool

Complete the following procedure (and refer to the illustrations) to install the TPMC-8X-DSW Bezel Conversion Kit.

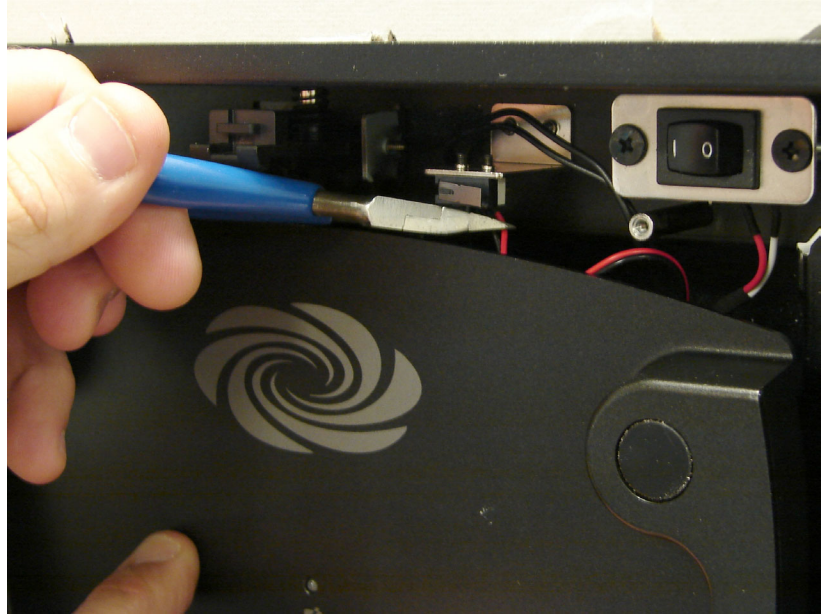
1. If the touch panel is mounted in the TPMC-8X-DSW, remove it. Then turn off power to the TPMC-8X-DSW.
2. Use a small slot screwdriver or needle nose pliers to remove the plugs covering the two screws securing the old bezel in place.

Remove Plugs Covering Screws



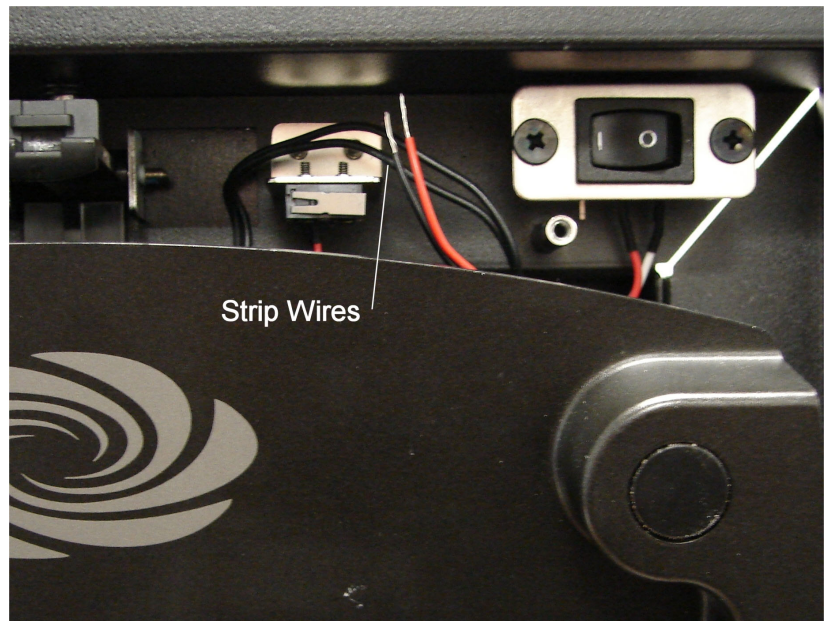
3. Use the Phillips screwdriver to remove the two screws securing the old bezel in place.
4. Remove the old bezel from the TPMC-8X-DSW.
5. Use the wire cutters to cut the red and black wires just below the switch. (No need to remove the switch itself, which can be left in place.)

Cut Wires at Switch



6. Use the wire stripper to strip the ends of the wires 0.18-0.20" (~5 mm).

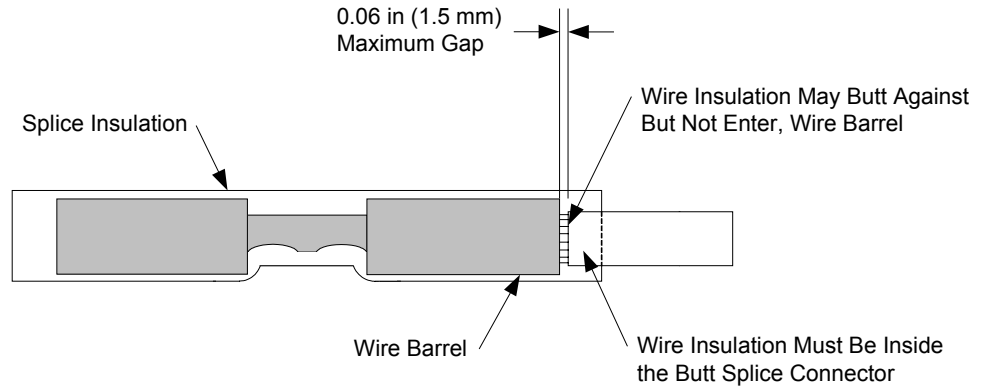
Strip Wires



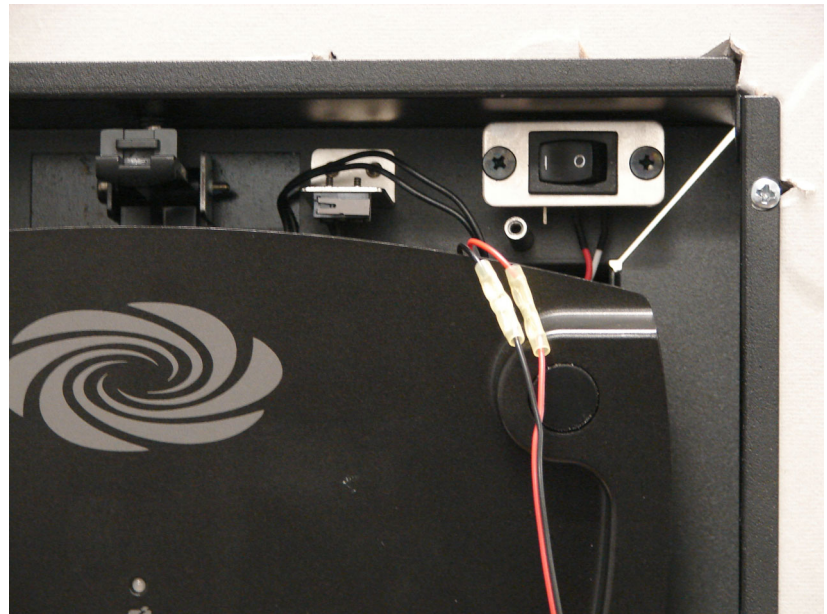
7. Insert the stripped wires into the butt splice connectors of the new cable assembly and use the wire crimping tool to crimp the butt splice connectors for a tight connection.

NOTE: The stripped wire must be inserted into the wire barrel until the wire insulation is against the wire barrel but not inside it. The wire insulation must be inside the butt splice connector. A gap between the wire insulation and wire barrel is allowed but should not exceed 0.06" (~1.5 mm)

Transparent Insulation Window Butt Splice

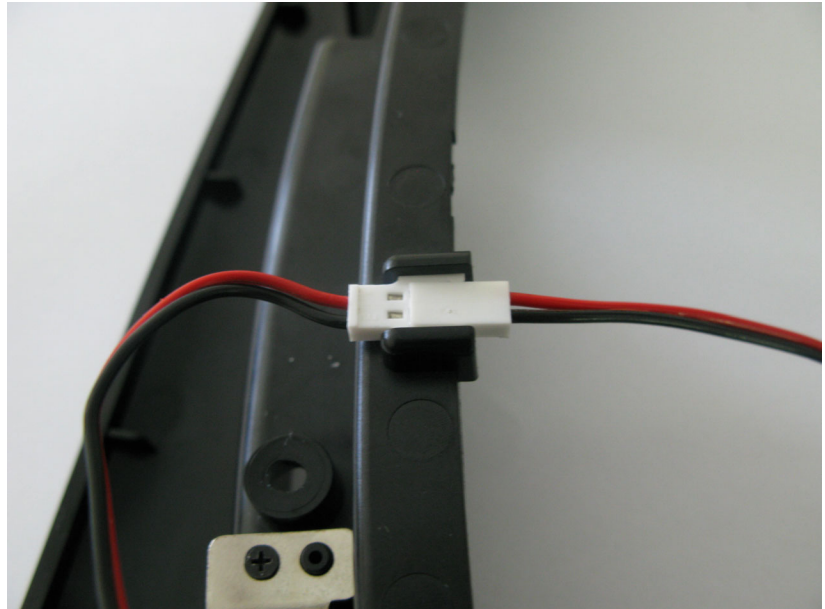


Attach Wires to Cable Assembly



8. Connect the mating connector on the cable assembly to the connector on the new bezel.

Connecting Cable Assembly to New Bezel



9. Install the bezel into the TPMC-8X-DSW, being careful to tuck excess wire above the old switch.
10. Install the bezel screws, replacing the screws removed in step 3 or using the two included with the TPMC-8X-DSW Bezel Conversion Kit.
11. Install the new plugs, included with the TPMC-8X-DSW Bezel Conversion Kit., in place of the plugs removed in step 2.
12. Re-apply power to the TPMC-8X-DSW.

Resources

Reference Documents

The latest version of all documents mentioned within the guide can be obtained from the Crestron Web site (www.crestron.com/manuals). This link will provide a list of product manuals arranged in alphabetical order by model number.

List of Related Reference Documents

DOCUMENT TITLE
TPMC-8X Isys 8.4" WiFi Touch Panel
TPMC-8X-GA Isys 8.4" WiFi Touch Panel

Further Inquiries

If you cannot locate specific information or have questions after reviewing this guide, please take advantage of Crestron's award winning customer service team by calling Crestron at 1-888-CRESTRON [1-888-273-7876].

You can also log onto the online help section of the Crestron Web site (www.crestron.com/onlinehelp) to ask questions about Crestron products. First-time users will need to establish a user account to fully benefit from all available features.

Future Updates

As Crestron improves functions, adds new features and extends the capabilities of the TPMC-8X-DSW Bezel Conversion Kit, additional information may be made available as manual updates. These updates are solely electronic and serve as intermediary supplements prior to the release of a complete technical documentation revision.

Check the Crestron Web site periodically for manual update availability and its relevance. Updates are identified as an "Addendum" in the Download column.

Return and Warranty Policies

Merchandise Returns / Repair Service

1. No merchandise may be returned for credit, exchange or service without prior authorization from CRESTRON. To obtain warranty service for CRESTRON products, contact an authorized CRESTRON dealer. Only authorized CRESTRON dealers may contact the factory and request an RMA (Return Merchandise Authorization) number. Enclose a note specifying the nature of the problem, name and phone number of contact person, RMA number and return address.
2. Products may be returned for credit, exchange or service with a CRESTRON Return Merchandise Authorization (RMA) number. Authorized returns must be shipped freight prepaid to CRESTRON, 6 Volvo Drive, Rockleigh, N.J. or its authorized subsidiaries, with RMA number clearly marked on the outside of all cartons. Shipments arriving freight collect or without an RMA number shall be subject to refusal. CRESTRON reserves the right in its sole and absolute discretion to charge a 15% restocking fee plus shipping costs on any products returned with an RMA.
3. Return freight charges following repair of items under warranty shall be paid by CRESTRON, shipping by standard ground carrier. In the event repairs are found to be non-warranty, return freight costs shall be paid by the purchaser.

CRESTRON Limited Warranty

CRESTRON ELECTRONICS, Inc. warrants its products to be free from manufacturing defects in materials and workmanship under normal use for a period of three (3) years from the date of purchase from CRESTRON, with the following exceptions: disk drives and any other moving or rotating mechanical parts, pan/tilt heads and power supplies are covered for a period of one (1) year; touchscreen display and overlay components are covered for 90 days; batteries and incandescent lamps are not covered.

This warranty extends to products purchased directly from CRESTRON or an authorized CRESTRON dealer. Purchasers should inquire of the dealer regarding the nature and extent of the dealer's warranty, if any.

CRESTRON shall not be liable to honor the terms of this warranty if the product has been used in any application other than that for which it was intended or if it has been subjected to misuse, accidental damage, modification or improper installation procedures. Furthermore, this warranty does not cover any product that has had the serial number altered, defaced or removed.

This warranty shall be the sole and exclusive remedy to the original purchaser. In no event shall CRESTRON be liable for incidental or consequential damages of any kind (property or economic damages inclusive) arising from the sale or use of this equipment. CRESTRON is not liable for any claim made by a third party or made by the purchaser for a third party.

CRESTRON shall, at its option, repair or replace any product found defective, without charge for parts or labor. Repaired or replaced equipment and parts supplied under this warranty shall be covered only by the unexpired portion of the warranty.

Except as expressly set forth in this warranty, CRESTRON makes no other warranties, expressed or implied, nor authorizes any other party to offer any warranty, including any implied warranties of merchantability or fitness for a particular purpose. Any implied warranties that may be imposed by law are limited to the terms of this limited warranty. This warranty statement supersedes all previous warranties.

This page is intentionally left blank.



Crestron Electronics, Inc.
15 Volvo Drive Rockleigh, NJ 07647
Tel: 888.CRESTRON
Fax: 201.767.7576
www.crestron.com

Installation Guide – DOC. 7144A
(2029699)
03.11
Specifications subject to
change without notice.