

TSS-7/TSS-10

7 in. and 10.1 in. Room Scheduling Touch Screens

The Crestron® TSS-7 and TSS-10 are stylish and versatile wall mount touch screens designed specifically for enterprise room scheduling applications. The TSS-7 and TSS-10 integrate directly with a variety of popular room scheduling services. The TSS-7 and TSS-10 install quickly and easily with simple web-based configuration and cloud-based management, and they require no control system or programming.

NOTE: The Crestron TSS-7 and TSS-10 are functionally similar. For simplicity within this guide, the term "touch screen" is used except where noted.

Check the Box

Item	Qty
TSS-7 or TSS-10*	1
Bracket, Mounting (P/N 4525352)	1
Latch, Security (P/N 4525305)	1
Screw, 6-32 x 3/4 in., Undercut Head, Phillips (P/N 2033247)	4
Screw, M3 x 16 mm, Flat Head, Phillips (P/N 2013788)	4
Screw, M3.5 x 25 mm, Flat Head, Phillips (P/N 2023756)	2

* Refer to the TSS-7-B-S and TSS-10-B-S product pages at www.crestron.com for a complete list of color and texture variations.

Install the Mounting Bracket

The touch screen installs over a standard 2-gang or 3-gang U.S. electrical box, a 2-gang European electrical box, or a 2-gang U.K. electrical box. The touch screen may also be installed into wooden paneling or furniture with a 2-1/5 in. (56 mm) high by 3-3/4 in. (96 mm) wide rectangular cutout. When installed, the touch screen protrudes 1/2 in. (13 mm) from the mounting surface, leaving no visible screws.

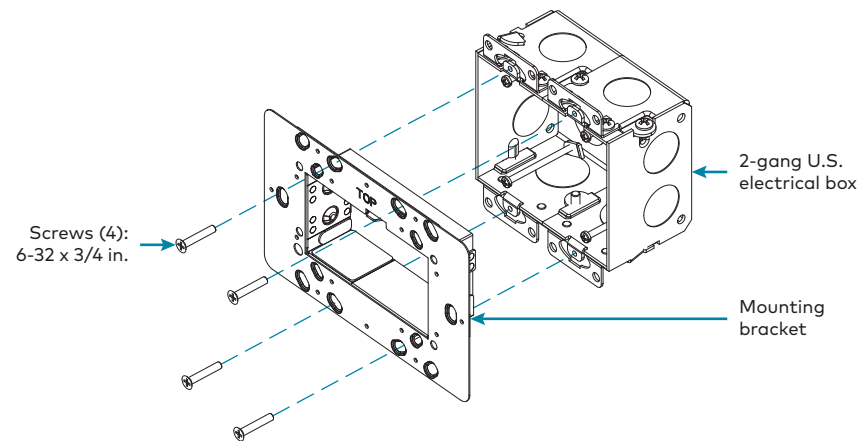
NOTES:

- Additional mounting options are possible using the TSW-UMB-60 universal mounting bracket, the TSW-UMB-60-PMK preconstruction mounting kit, the TSW-UMB-60-BBI back box, or the TSW-760/1060-MSMK multisurface mount kit. For more information, refer to the product pages on the Crestron website.
- Installing the mounting bracket to an electrical box is required only if one of the mounting solutions above is not used. For more information, refer to the mounting solution documentation at www.crestron.com/manuals.

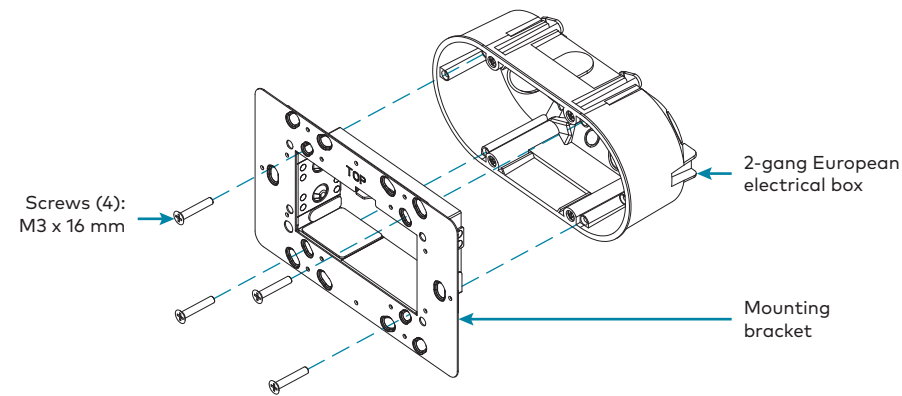
To mount the touch screen into an electrical box, use the appropriate screws (four 6-32 x 3/4 in. screws, four M3 x 16 mm screws, or two M3.5 x 25 mm screws) to attach the mounting bracket to the electrical box as shown in the following illustrations.

NOTE: For U.S.-style installations, use a #2 Phillips screwdriver. For European or U.K.-style installations, use a #1 Phillips screwdriver or its equivalent.

- For U.S.-style installations, use the four 6-32 x 3/4 in. screws.



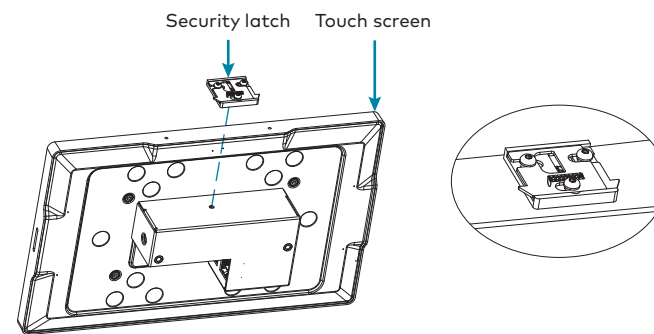
- For European-style installations, use the four M3 x 16 mm screws.



- For U.K.-style installations (not pictured), use the two M3.5 x 25 mm screws to attach the mounting bracket to the electrical box. Insert the screws through the center openings in the left and right sides of the mounting bracket.

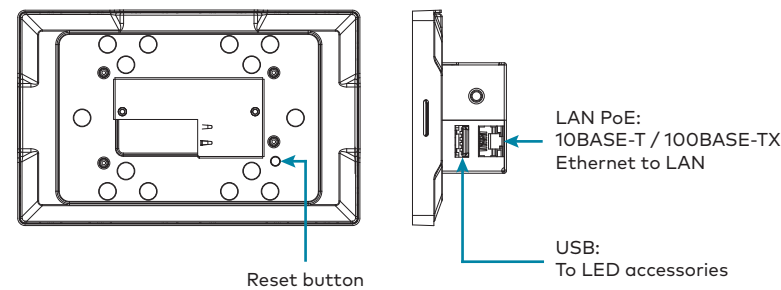
Install the Security Latch (Optional)

The included security latch may be attached to the touch screen so that it cannot be easily removed from the mounting bracket after installation. To install the security latch, use a small Phillips screwdriver to screw the security latch to the top of the touch screen rear housing before the touch screen is inserted into the mounting bracket.



Connect the Touch Screen

Route all necessary cables through the rear of the electrical box, and then make connections to the touch screen as shown in the illustration below.



Observe the following when connecting the touch screen:

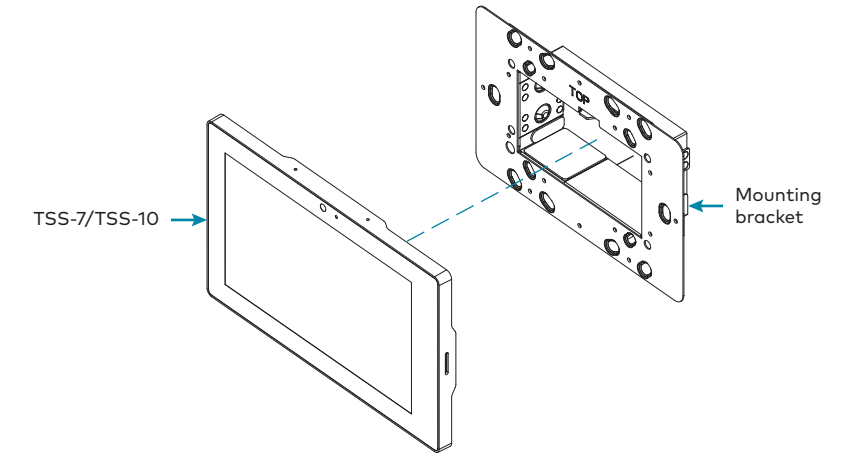
- Use Crestron power supplies for Crestron equipment.
- Power and data connection is provided to the touch screen by a single Ethernet cable. A Crestron PoE (Power over Ethernet) power supply, such as the PWE-4803RU, or a PoE-capable network switch is recommended (both not included).
- The USB port is used to connect compatible Crestron LED accessories to the touch screen.

NOTE: The TSS-7 may use either PoE or PoE+ to supply power to compatible LED accessories over USB, but the TSS-10 must use only PoE+ to supply power to LED accessories over USB.

- Apply power after all connections have been made.

Install the Touch Screen

Once all connections have been made, push the touch screen gently into the mounting bracket so that the touch screen rear housing is secured within the center opening in the mounting bracket.



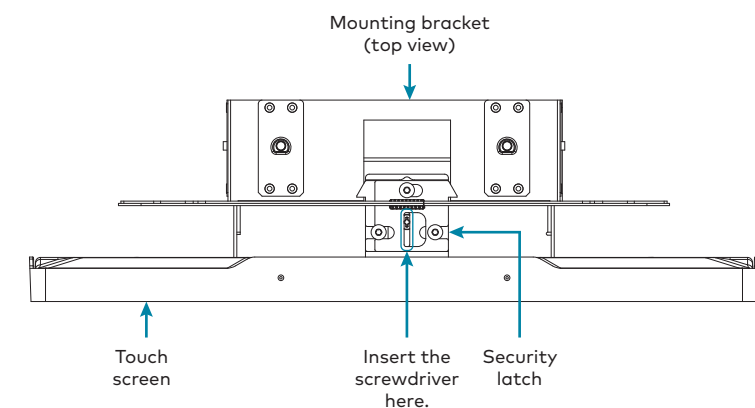
If the touch screen is not level after installation, pull the touch screen out of the mounting bracket and loosen the screws holding the bracket into place. This procedure allows the mounting bracket to be rotated slightly. Once the mounting bracket has been repositioned, retighten the screws, reinstall the touch screen into the bracket, and ensure that the touch screen is now level.

Remove the Touch Screen

To remove the touch screen after installation, carefully pull the touch screen away from the wall until it disengages from the mounting bracket.

To remove the touch screen if the security latch has been installed:

- Pull the touch screen away from the wall until the security latch makes contact with the mounting bracket.
- Insert a flat-head screwdriver into the slot on the security latch and rotate the latch into the open position, which retracts the security latch arms.
- With the arms retracted, pull on the touch screen to disengage it from the mounting bracket.

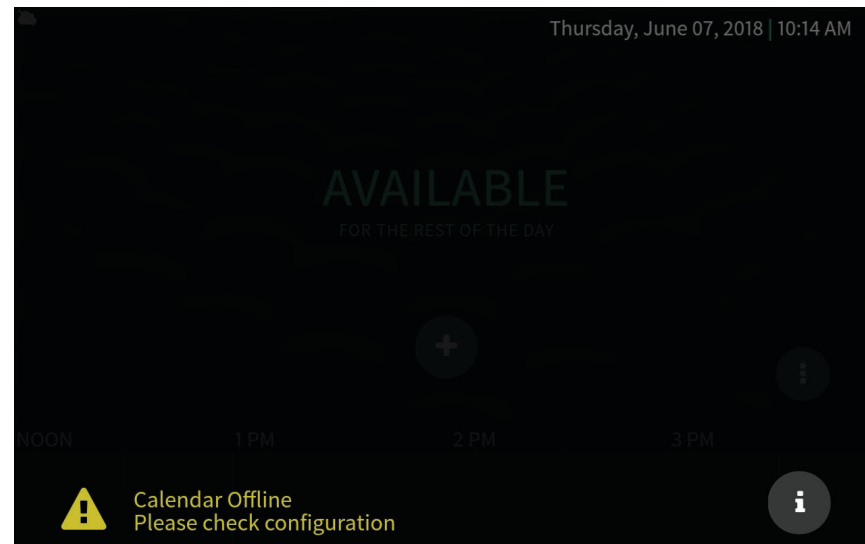


NOTE: There is a small amount of "play" in the bracket mounting, which allows room to insert the screwdriver.



Configure the Device

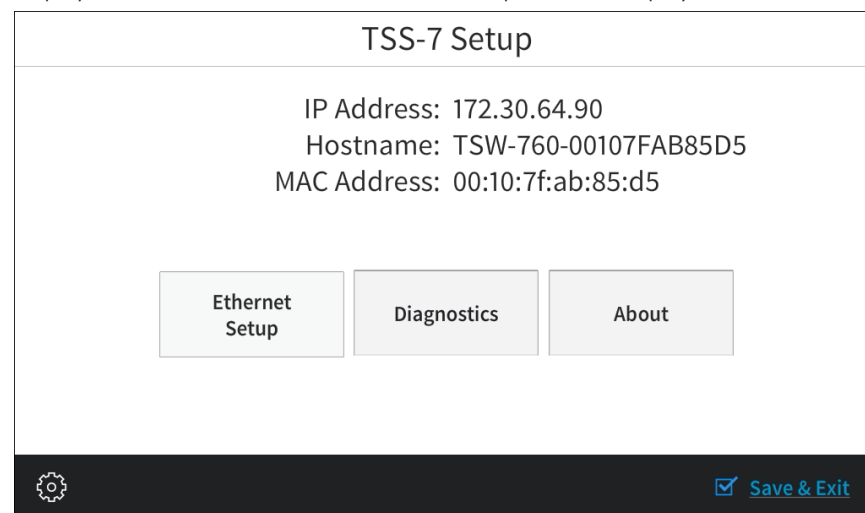
When power is applied for the first time, the touch screen boots with the Crestron room scheduling application selected by default. The touch screen may take up to two minutes to boot.



Device settings for the touch screen may be configured using the built-in setup screens or using the included web configuration interface. For more information on configuring the touch screen, refer to the TSS-7/TSS-10 Supplemental Guide (Doc. 8327) at www.crestron.com/manuals.

Access the Device Setup Screens

To access the built-in setup screens for configuring device settings, place five fingers on the display and hold for 15 seconds. The main Setup screen is displayed (TSS-7 shown).



Use the setup screens to configure various settings for the touch screen, including Ethernet setup and diagnostics.

Access the Web Configuration Interface

The touch screen also provides a web configuration interface that is used to view and configure various touch screen settings and to select an application. The interface can be accessed using the touch screen IP address or the Crestron XiO Cloud™ service.

Touch Screen IP Address

To access the web configuration interface using the touch screen IP address:

1. Ensure that the touch screen is connected to the network.
2. Use the Device Discovery tool in Crestron Toolbox™ software to discover the touch screen and its IP address on the network.
3. Enter the touch screen IP address into a web browser.

Crestron XiO Cloud Service

The Crestron XiO Cloud service allows supported Crestron devices across an enterprise to be managed and configured from one central and secure location in the cloud. Supported devices are configured to connect to the service. Use of the service requires a registered Crestron XiO Cloud account.

NOTE: The device may be disconnected from the service by navigating to the **Cloud Services** tab in Crestron Toolbox software (**Functions > Device Info > Cloud Services**). For details, refer to the Crestron Toolbox help file.

To access the web configuration interface using the Crestron XiO Cloud service:

1. Record the MAC address and serial number that are labeled on the shipping box or rear panel of the device. The MAC address and serial number are required to add the device to the service.
 - For existing accounts, access the Crestron XiO Cloud service at <https://portal.crestron.io>.
 - For new accounts, register for a complimentary Crestron XiO Cloud account at <https://crestron.com/Support/Tools/Applications/Complimentary-XiO-Cloud-License-Registration-TSS>.
3. Claim the device to the service as described in the Crestron XiO Cloud User Guide (Doc. 8214) at www.crestron.com/manuals.
4. Select the device from the cloud interface to view its settings.

Set the Time Zone

The time zone must be set on the touch screen prior to selecting an application.

To set the time zone:

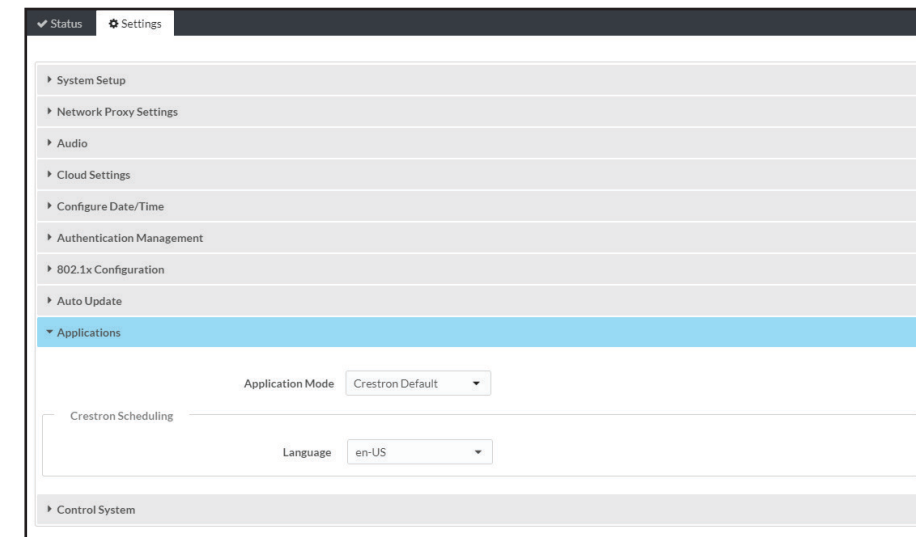
1. Access the web configuration interface using either the touch screen IP address or the Crestron XiO Cloud service.
2. Navigate to **Settings > Configure Date/Time**.
3. Select the time zone where the touch screen will be used from the **Time Zone** drop-down menu.
4. Click **Save Changes** on the top right of the screen.

Select a Room Scheduling Application

To select a room scheduling application from the web configuration interface:

NOTE: For more information on configuring each of the provided room scheduling applications, refer to the TSS-7/TSS-10 Supplemental Guide (Doc. 8327).

1. Enter the touch screen IP address into a web browser to access the web configuration interface.
2. Navigate to **Settings > Applications**.



3. Select the desired scheduling provider from the **Application Mode** drop-down menu.
4. If necessary, enter any additional information (such as a registration URL) that is required for connecting to the scheduling provider.
5. Click **Save Changes** on the top right of the screen.
6. When prompted, reboot the touch screen. The touch screen reboots into the selected scheduling mode.

Additional Information

Scan or click the QR code for detailed product information.



TSS-7-B-S



TSS-10-B-S

Compliance and Legal

Original Instructions: The U.S. English version of this document is the original instructions. All other languages are a translation of the original instructions.

Regulatory Models: TSW-760 TSW-1060

As of the date of manufacture, the product has been tested and found to comply with specifications for CE marking.



This product is Listed to applicable UL® Standards and requirements tested by Underwriters Laboratories Inc.

Ce produit est homologué selon les normes et les exigences UL applicables par Underwriters Laboratories Inc.



Federal Communications Commission (FCC) Compliance Statement

This device complies with part 15 of the FCC Rules. Operation is subject to the following conditions: (1) This device may not cause harmful interference and (2) this device must accept any interference received, including interference that may cause undesired operation.

CAUTION: Changes or modifications not expressly approved by the manufacturer responsible for compliance could void the user's authority to operate the equipment.

NOTE: This equipment has been tested and found to comply with the limits for a Class B digital device, pursuant to part 15 of the FCC Rules. These limits are designed to provide reasonable protection against harmful interference in a residential installation. This equipment generates, uses and can radiate radio frequency energy and, if not installed and used in accordance with the instructions, may cause harmful interference to radio communications. However, there is no guarantee that interference will not occur in a particular installation. If this equipment does cause harmful interference to radio or television reception, which can be determined by turning the equipment off and on, the user is encouraged to try to correct the interference by one or more of the following measures:

- Reorient or relocate the receiving antenna.
- Increase the separation between the equipment and receiver.
- Connect the equipment into an outlet on a circuit different from that to which the receiver is connected.
- Consult the dealer or an experienced radio/TV technician for help.

Industry Canada (IC) Compliance Statement

CAN ICES-3 (B)/NMB-3(B)

Crestron product development software is licensed to Crestron dealers and Crestron Service Providers (CSPs) under a limited non-exclusive, non-transferable Software Development Tools License Agreement. Crestron product operating system software is licensed to Crestron dealers, CSPs, and end-users under a separate End-User License Agreement. Both of these Agreements can be found on the Crestron website at www.crestron.com/legal/software_license_agreement.

The product warranty can be found at www.crestron.com/warranty.

The specific patents that cover Crestron products are listed at www.crestron.com/legal/patents.

Certain Crestron products contain open source software. For specific information, please visit www.crestron.com/opensource.

Crestron, the Crestron logo, Crestron Toolbox, and Crestron XiO Cloud are either trademarks or registered trademarks of Crestron Electronics, Inc., in the United States and/or other countries. UL and the UL logo are either trademarks or registered trademarks of Underwriters Laboratories, Inc. in the United States and/or other countries. Other trademarks, registered trademarks, and trade names may be used in this document to refer to either the entities claiming the marks and names or their products. Crestron disclaims any proprietary interest in the marks and names of others. Crestron is not responsible for errors in typography or photography.

©2019 Crestron Electronics, Inc.

Crestron Electronics, Inc.
15 Volvo Drive, Rockleigh, NJ 07647
Tel: 888.CRESTRON
Fax: 201.767.7576
www.crestron.com

Quick Start - Doc. 8326D
(2053122)
06/06/19

Specifications subject to change without notice.