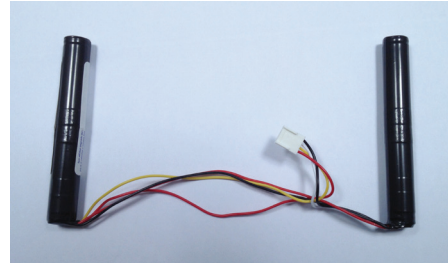


TST-600-BTP Battery Pack for TST-600 and TST-602

The Crestron® TST-600-BTP consists of two battery cells along with the integrated wiring. It has a multipin connector that attaches to the inside of the TST-600 or TST-602.

TST-600-BTP with Multipin Connector



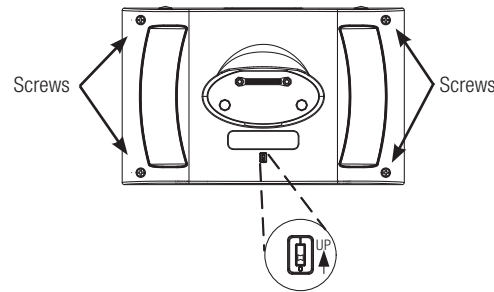
DO Remove the Old Battery Pack

NOTE: The TST-600 and TST-602 Wireless Touch Screens contain electrostatic discharge (ESD) sensitive devices. To avoid damaging the unit, perform the following procedure while wearing a grounding strap that is properly grounded or while working on a grounded workstation.

NOTE: To prevent damage to the multipin connector and wiring, use care when handling the TST-600-BTP.

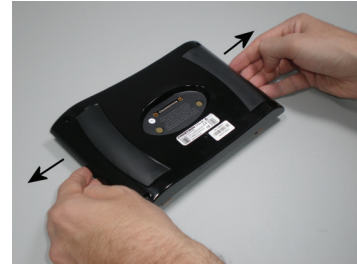
Perform the following procedure to remove the existing TST-600-BTP from a TST-600 or TST-602 touch screen. A #1 Phillips screwdriver is required.

1. Use the included T-pin to slide the battery switch on the rear to the off (down) position. Then place the touch screen face down on a clean, padded work surface.

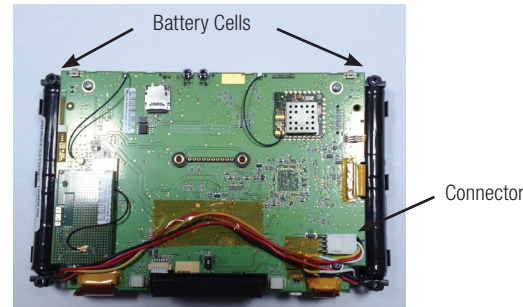


2. Remove the four screws that secure the front bezel to the touch screen and return the unit to its normal, face-up position. (Use care and hold the bezel against the touch screen.)
3. Unsnap the front bezel and lift it off of the touch screen and then place the touch screen assembly face down on the work surface.

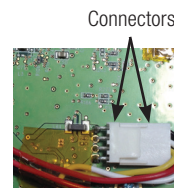
4. Carefully remove the rear of the enclosure from the touch screen by grasping the support frame at the left and right edges, gently spreading the edges (as shown in the following image), and then lifting the assembly. It snaps out of the enclosure.



5. Remove the orange tape securing the battery pack wires to the assembly.



6. Gently separate the multipin connector from the corresponding connector on the circuit board of the touch screen.



7. Remove battery cells, with the connecting wires attached, from both sides of the assembly.

DO Install the New Battery Pack

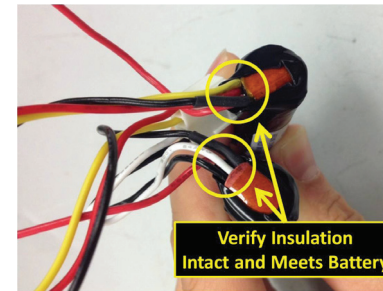
NOTE: The TST-600 and TST-602 Wireless Touch Screens contain electrostatic discharge (ESD) sensitive devices. To avoid damaging the unit, perform the following procedure while wearing a grounding strap that is properly grounded or while working on a grounded workstation.

DO Check the Box

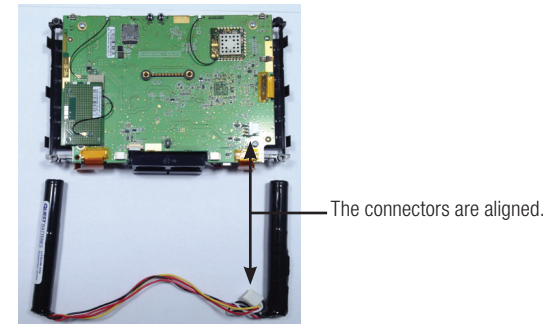
| QUANTITY | PRODUCT | PART NUMBER |
|----------|---------------------------|-------------|
| 2 | Tape, Perforated, 1" x 1" | 2023162 |
| 1 | Tape, Perforated, 1" x 2" | 2023163 |
| 1 | Metal T-Pin | 2020478 |

After removing the old TST-600-BTP from the touch screen, perform the following procedure to install the new TST-600-BTP. A #1 Phillips screwdriver is required.

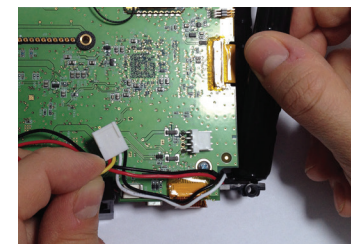
1. Inspect the wire insulation on the battery pack and verify that it extends to the battery wrap and is free of nicks or damage.



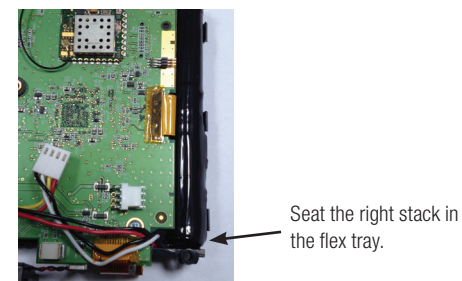
2. Orient the TST-600-BTP so the wires exiting the battery are facing the connector on the touch screen.



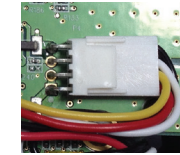
3. Slide the right stack wires (those closest to the connector) into the PCB channel, angling the top of the stack into the pocket of the flex support tray.



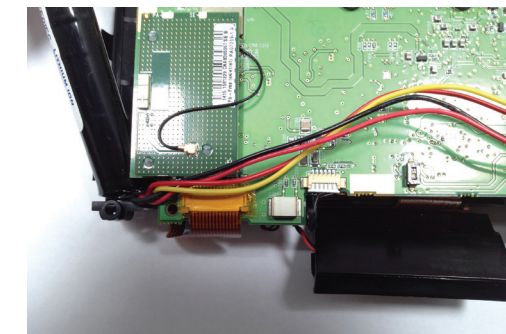
4. Fully seat the right stack into the right pocket of the flex support tray and verify that the wires have not been damaged during installation.



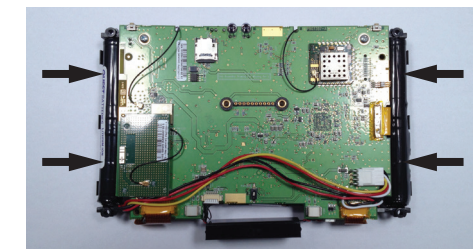
5. Connect the battery pack harness to the PCB connector.



6. With the wire harness positioned above the installed insulator, slide the left stack wires into the PCB channel, angling the top of the stack into the pocket of the flex support tray.

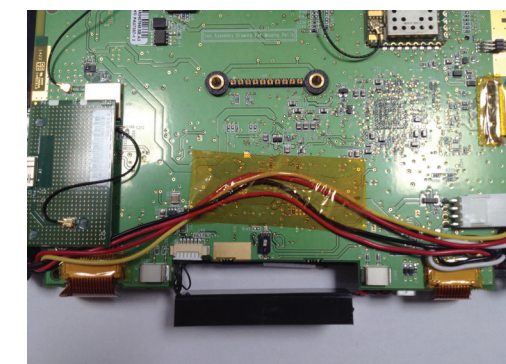


7. Fully seat the left stack into the left pocket of the flex support tray and verify that the wires have not been damaged during installation.
8. Verify that the battery pack is connected and that the stacks are fully seated into the left and right pockets.



9. Dress the battery wires as shown in the following image. Use the 2 1/2 inch (64 mm) long piece of orange tape to secure the wires.

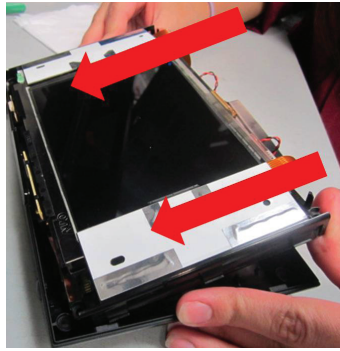
NOTE: When routing the wires, avoid blocking the battery switch.



DO Replace the PCB Assembly

Replace the PCM assembly into the rear enclosure using the following procedure:

1. Carefully begin to install the PCB assembly at an angle with the top end first into the rear of the enclosure.

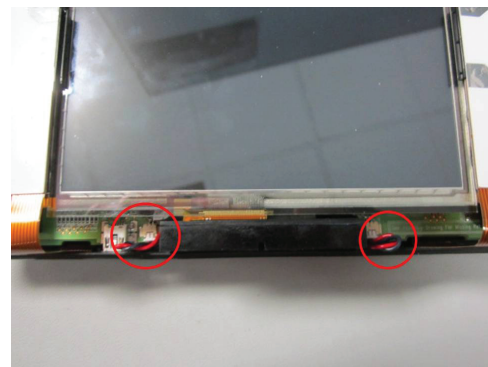


2. Slide the speaker assembly section of the PCB into the slot in the rear enclosure, ensuring the wires are pushed up. Then, place the bottom end of the PCB assembly into the housing.

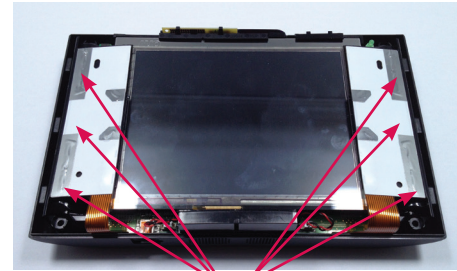


Ensure the wires are pushed up and do not pinch on the housing.

3. Verify that the speaker cables are properly positioned above the PCB.



4. Gently press the PCB assembly into the rear enclosure, snapping the assembly into position at the six locations shown below.

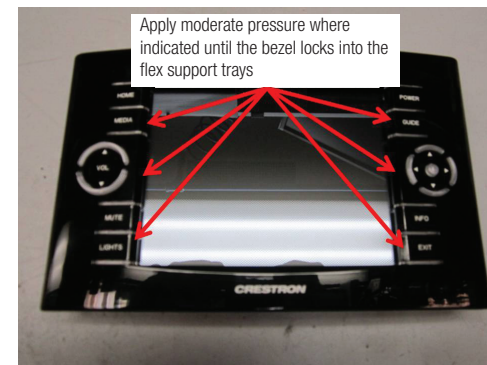


Snap the PCB assembly into place.

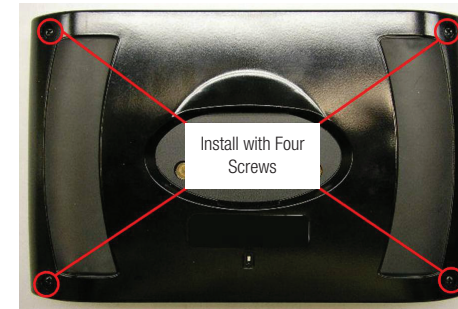
5. Carefully install the front bezel at an angle placing the top end first.



6. Gently press on bezel locations shown in the following image until the bezel locks into the flex support trays and a click is heard.



7. Secure the rear enclosure to the front enclosure using the four screws.



8. Reconnect the power by sliding the battery switch on the rear to the on (up) position.

DO Charge the Battery Pack

To charge the TST-600-BTP, install the TST-600-BTP in the touch screen and mount the touch screen on a powered TST-600-DS docking station.

NOTE: The battery pack may take up to five hours to charge in a powered touch screen if the panel is in use while charging.

DO Store the Battery Pack

The TST-600-BTP can be stored in a temperate, dry place (removed from the touch screen and docking station) for up to three months without significant irreversible degradation of its performance. The self-discharge rate is a function of temperature and internal resistance. High temperature storage reduces charge retention. Best results occur if the TST-600-BTP is stored at an optimal temperature of 32° to 95°F (0° to 35°C).

NOTE: Li-ion batteries must be stored at 50% charge and cycled every three months.

DO Dispose of the Battery Pack

NOTE: The TST-600-BTP contains a lithium ion battery. When the unit can no longer retain a charge, it must be recycled or disposed of properly. Follow local ordinances and regulations for disposal.



NOTE: The battery must be recycled. Deliver the battery pack to an appropriate recycling facility.

DO Learn More

Visit the website for additional information and the latest firmware updates.

Crestron Electronics
15 Volvo Drive, Rockleigh, NJ 07647
888.CRESTRON | www.crestron.com



As of the date of manufacture, the product has been tested and found to comply with specifications for CE marking.

Crestron product development software is licensed to Crestron dealers and Crestron Service Providers (CSPs) under a limited non-exclusive, non-transferable Software Development Tools License Agreement. Crestron product operating system software is licensed to Crestron dealers, CSPs, and end-users under a separate End-User License Agreement. Both of these Agreements can be found on the Crestron website at www.crestron.com/legal/software_license_agreement.

The specific patents that cover Crestron products are listed at www.patents.crestron.com.

Product warranty can be found at www.crestron.com/warranty.

Crestron and the Crestron logo are either trademarks or registered trademarks of Crestron Electronics, Inc. in the United States and/or other countries. Other trademarks, registered trademarks, and trade names may be used in this document to refer to either the entities claiming the marks and names or their products. Crestron disclaims any proprietary interest in the marks and names of others. Crestron is not responsible for errors in typography or photography.

This document was written by the Technical Publications department at Crestron.

©2014 Crestron Electronics, Inc.