

# CSS-CLOSURE-PLATE

## Closure Plates & Mounting Clips for Crestron® Shades

**NOTE: "CSS-CLOSURE-PLATE" is sold as part of a custom-configured product or can be ordered by length via the Crestron® Design Tool for Crestron Shading Solutions. This specifications page is for informational purposes and shows the available closure plates for shades. To configure shades or order shading parts and accessories, please use the Crestron Design Tool for Crestron Shading Solutions or call 1-855-53-S-H-A-D-E (537-4233) for support.**

### Closure Plates

A closure plate helps to conceal the underside of a Crestron® roller shade after it is mounted. When selecting a closure plate, make sure to coordinate it with the size of the pocket, leaving enough space for the shade fabric and hem bar to exit the pocket freely. The closure plate has a curved rail that holds it in place on a D pocket or pocket mounting clip.

The 1-1/2" and 3" closure plates can be used with D pockets and pocket mounting clips. The 5" closure plate can only be used with the pocket mounting clips because it is too large for the D pocket opening. (A 1-3/8" closure plate comes with the architectural headbox, but is used with that headbox only.)

### Pocket Mounting Clips

When a D pocket or headbox is not used, a pocket mounting clip holds the closure plate in place under the shade roller. The pocket mounting clip is used for recessed mounting and can be mounted into a customer provided pocket (such as wood or drywall) by drilling through the top portion of the mounting clip. Otherwise, screw heads may prevent the closure plate from mounting correctly.

A pocket mounting clip with tile lip is intended for recessed mounts where a drop-tile ceiling is present. The tile lip provides a place for acoustical ceiling tiles to rest. The bottom of the pocket mounting clip with tile lip is designed to match a T-bar ceiling for a seamless installation.

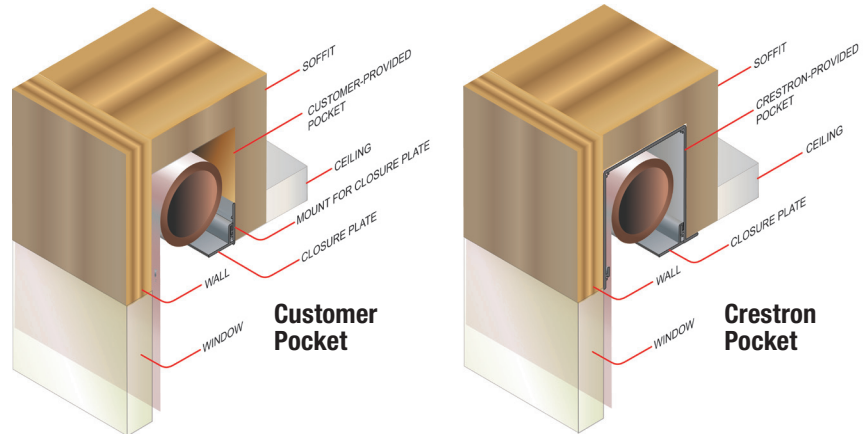
### AVAILABLE MODELS

- CSA-PLATE-CLOSURE-1.5-W: Closure Plate 1.5 Inches
- CSA-PLATE-CLOSURE-3-W: Closure Plate 3 Inches
- CSA-PLATE-CLOSURE-5-W: Closure Plate 5 Inches
- CSA-CHNL-POCKET-W: Pocket Mounting Clip
- CSA-MNT-CLOSURE-TILELIP-W: Mounting Clip with Tile Lip

### SPECIFICATIONS

| ITEM                               | HEIGHT         | WIDTH          | LENGTH                 | FINISH       |
|------------------------------------|----------------|----------------|------------------------|--------------|
| 1-1/2" Closure Plate               | 15/16" (24 mm) | 1-1/2" (38 mm) | Maximum 144" (3685 mm) | Metal; White |
| 3" Closure Plate                   | 15/16" (24 mm) | 3" (76 mm)     | Maximum 144" (3685 mm) | Metal; White |
| 5" Closure Plate                   | 15/16" (24 mm) | 5" (127 mm)    | Maximum 144" (3685 mm) | Metal; White |
| Pocket Mounting Clip               | 1-3/4" (44 mm) | 1/4" (7 mm)    | Maximum 144" (3685 mm) | Metal; White |
| Pocket Mounting Clip with Tile Lip | 1-3/4" (44 mm) | 7/8" (22 mm)   | Maximum 144" (3685 mm) | Metal; White |

### CUSTOMER PROVIDED POCKET VS CRESTRON PROVIDED POCKET



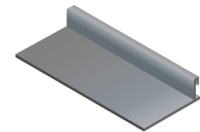
### D POCKET CLOSURE PLATES



The 1-1/2" and 3" closure plates are interchangeable on the D Pocket, mounting on either side as needed.

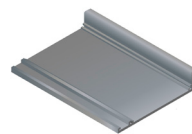


1-1/2" Closure Plate



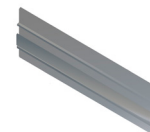
3" Closure Plate

### POCKET MOUNTING CLIPS

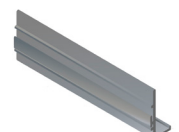


5" Closure Plate

The 5" closure plate fits on pocket mounting clips only.



Pocket Mounting Clip



Pocket Mounting Clip with Tile Lip

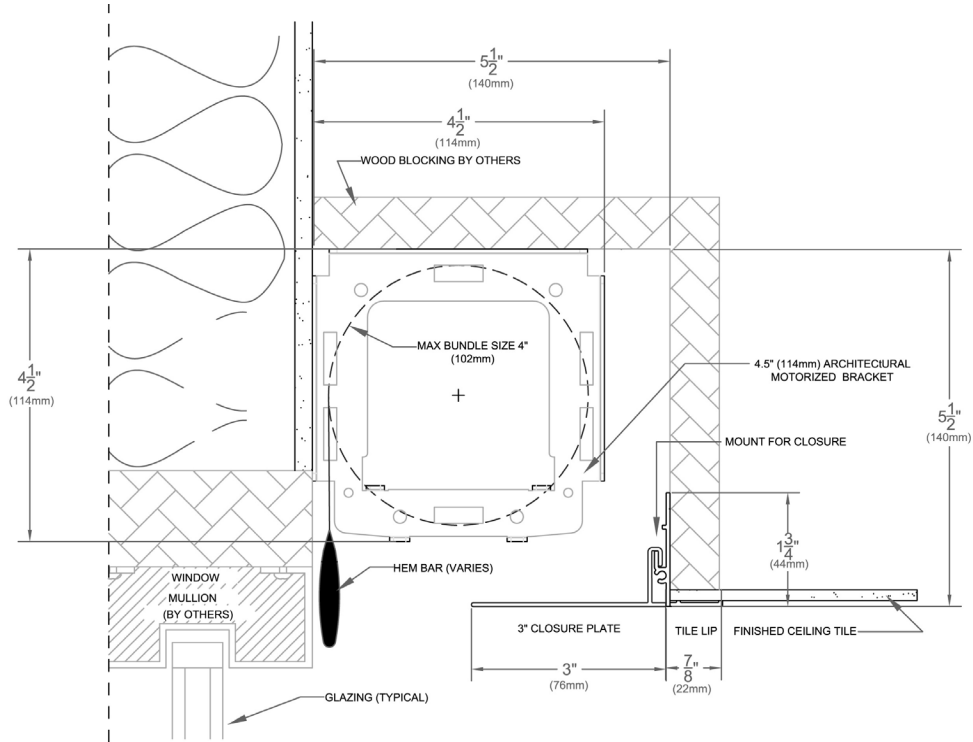
Notes: The specific patents that cover Crestron products are listed online at: [patents.crestron.com](http://patents.crestron.com).

Crestron and the Crestron logo are either trademarks or registered trademarks of Crestron Electronics, Inc. in the United States and/or other countries. Other trademarks, registered trademarks, and trade names may be used in this document to refer to either the entities claiming the marks and names or their products. Crestron disclaims proprietary interest in the marks and names of others. Crestron is not responsible for errors in typography or photography. Specifications are subject to change without notice. ©2014 Crestron Electronics, Inc.

# CSS-CLOSURE-PLATE Closure Plates & Mounting Clips for Crestron® Shades

## CAD DRAWINGS

### Customer Pocket with Pocket Mounting Clip with Tile Lip and 3" Closure Plate



### D Pocket with 3" Closure Plate

