

Crestron Custom Engraving Software

The [Impress Custom Engraving Software](#) provides custom engravings for the latest Crestron® engravable products, including remotes, keypads, signs, and more. The software is backwards compatible with Crestron Studio® software and engravings created with the Crestron Home® OS. Design options include engraving icons, mixing fonts on a single line, and styling text with emphasis, alignment, and font size. The software uses engraving technology to ensure what is designed on-screen matches the final product the customer receives.

NOTE: Available engraving options may vary depending on the Crestron product.



Software Requirements

Minimum Computer Requirements

Operating System	Windows 10® and 11; Compatible with 64-bit (recommended) or 32-bit platforms
CPU	2 GHz or faster (multi-core recommended)
Memory	4GB RAM minimum (8 GB RAM recommended)
Storage	1GB
Display	1920x1080 resolution or higher recommended

NOTE: Additional space is required to store engraving projects.

Crestron Custom Engraving Software



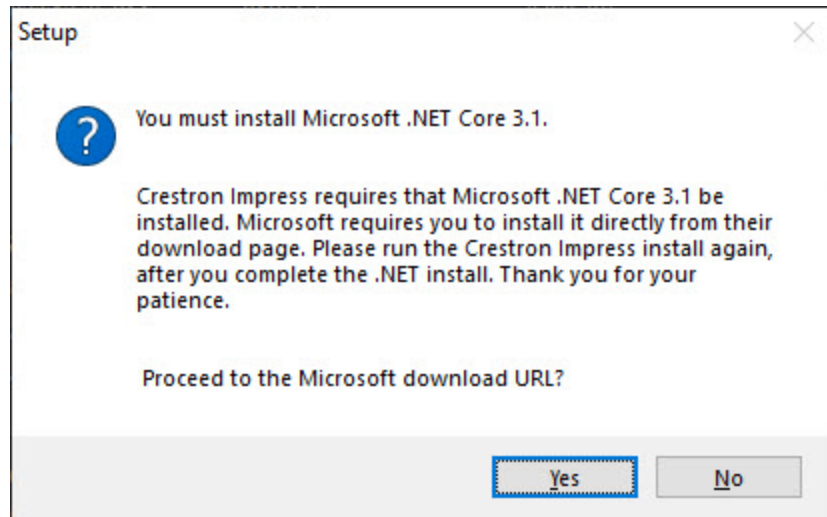
Installation

Use the following procedure to install Impress software.

NOTE: If Microsoft® .NET Core software is not already installed on the computer, you will be prompted to install it before continuing with the Impress installation.

1. Download the latest Impress installer package from the **Software & Firmware** resource page at www.crestron.com/Support/Resource-Library or the Impress software [product page](#).
2. Launch the Impress installer.

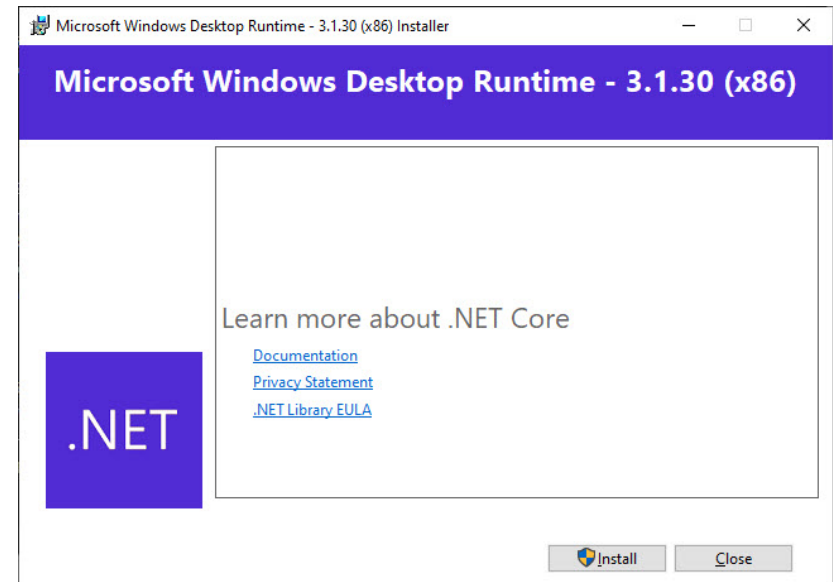
If Microsoft .NET Core is not installed on the computer, the **Setup** window displays prompting the Microsoft .NET Core installation.



- a. Select **Yes** to install Microsoft .NET Core. The download website opens in the default web browser.

NOTE: Impress will not run without Microsoft .NET Core installed.

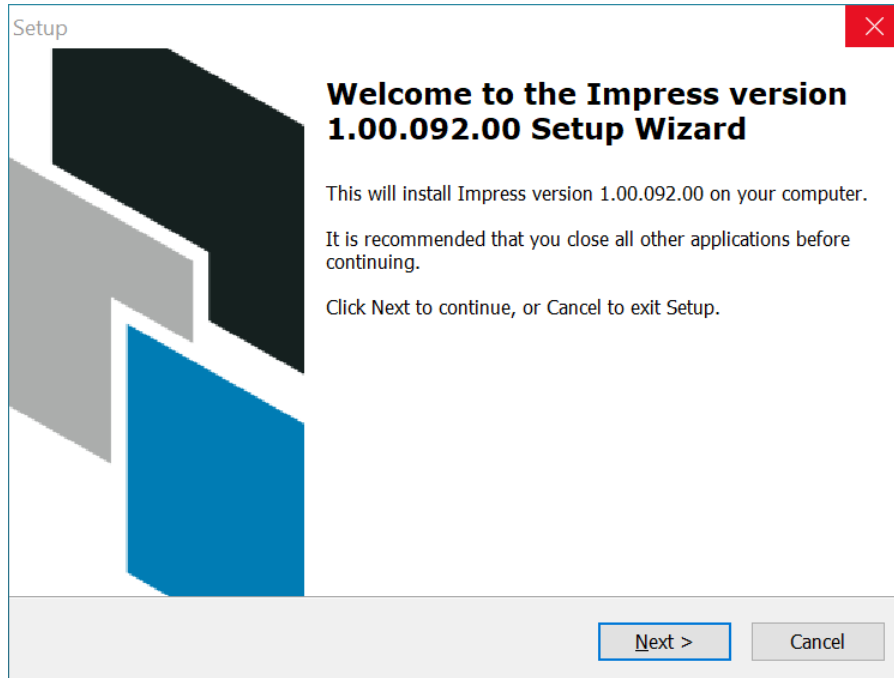
- b. If Microsoft .NET Core does not download automatically, select the link to download it and run the installer.
- c. Once Microsoft .NET Core is downloaded, open the program.
- d. Select **Install** to run the installer.



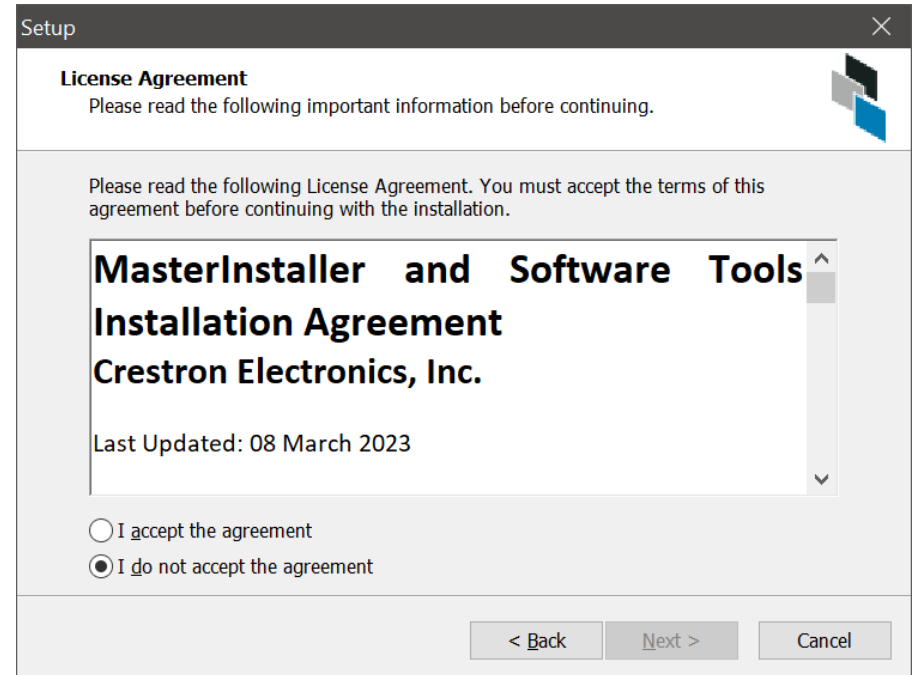
- e. When the Installation is finished, close the window.
- f. Relaunch Impress.

Crestron Custom Engraving Software

3. Select **Next** to start the Impress Setup Wizard.

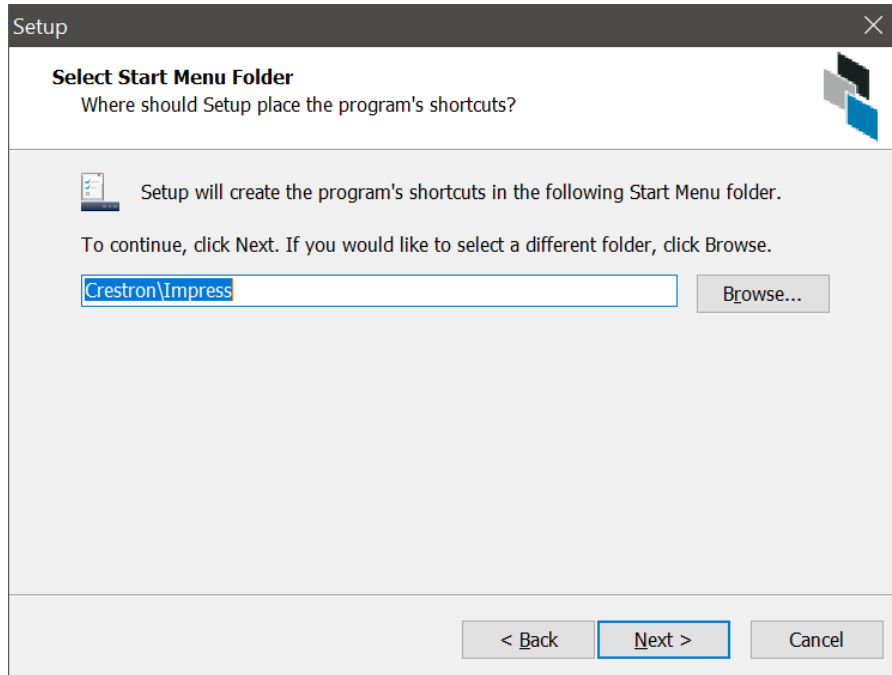


4. Accept the **License Agreement**, and select **Next**. Select **Back** to view the previous window.

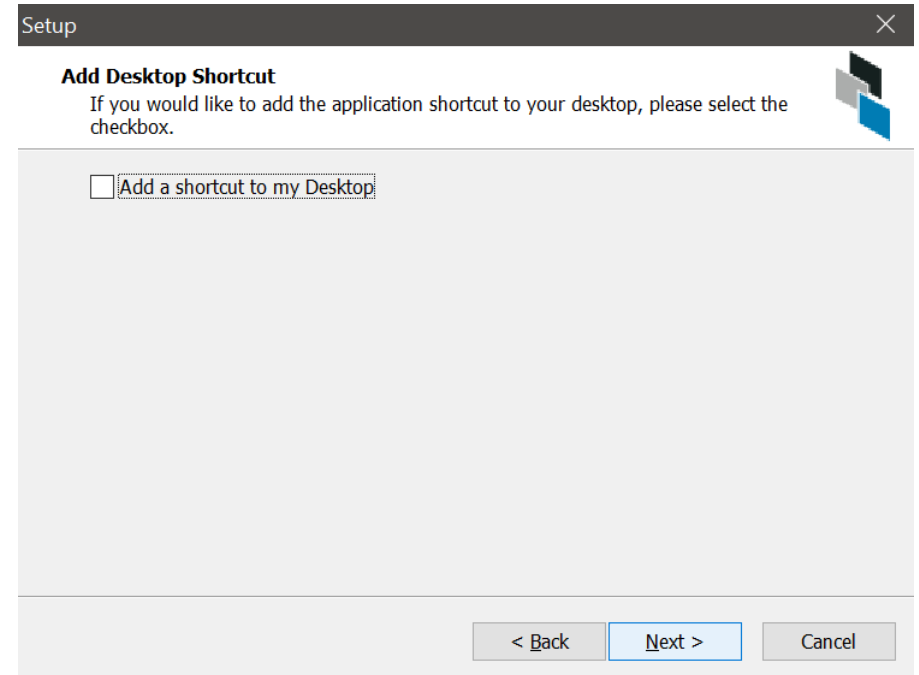


Crestron Custom Engraving Software

5. Select **Next** to keep the recommended program location, or click **Browse** to install Impress in a different location.

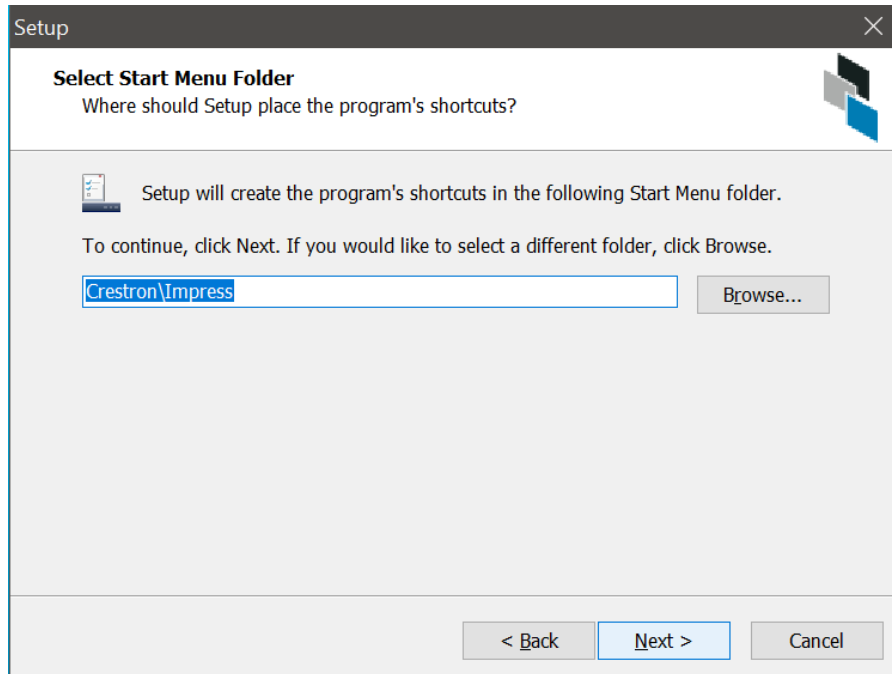


6. (Optional) Select the box to add a shortcut to your Desktop, then select **Next** to continue.



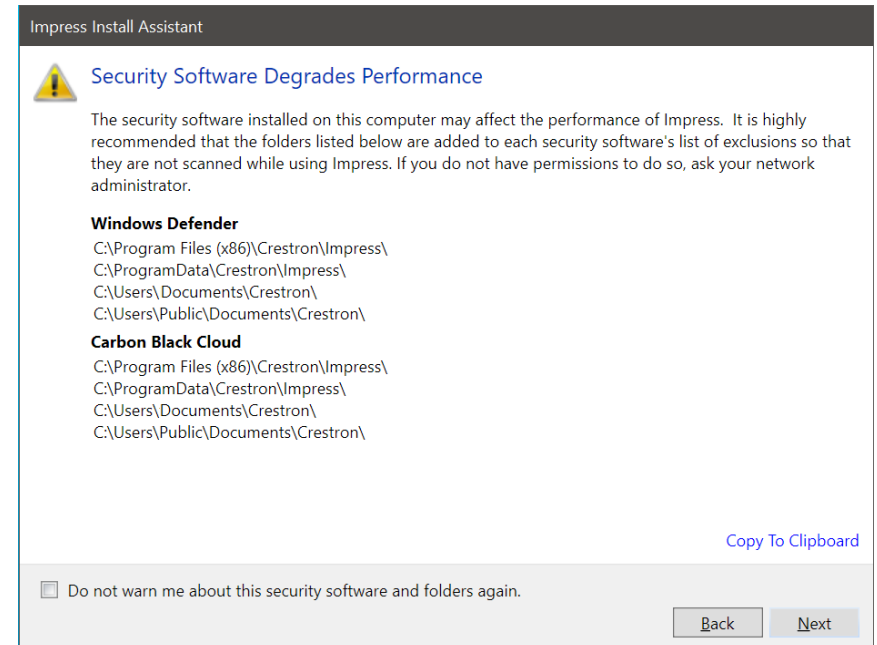
Crestron Custom Engraving Software

7. Select **Next** to keep the recommended Start Folder location, or select **Browse** to select a different location.



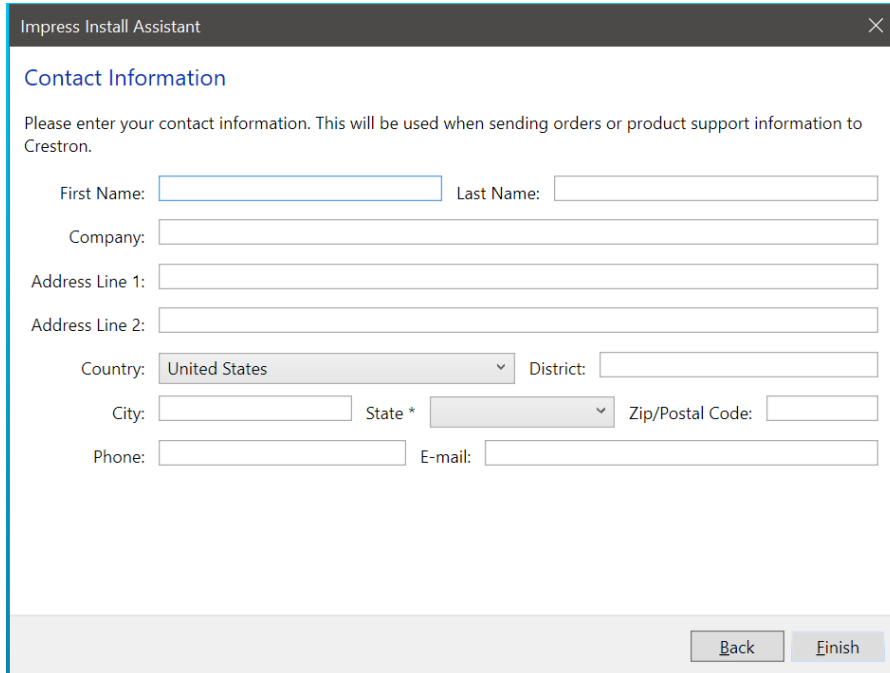
8. Review the **Security Software Degrades Performance** warning, and select **Next** to continue.

- Select **Copy To Clipboard** to copy the files listed.
- Select the check box to stop displaying the message.
- Select **Back** to view the previous window.



Crestron Custom Engraving Software

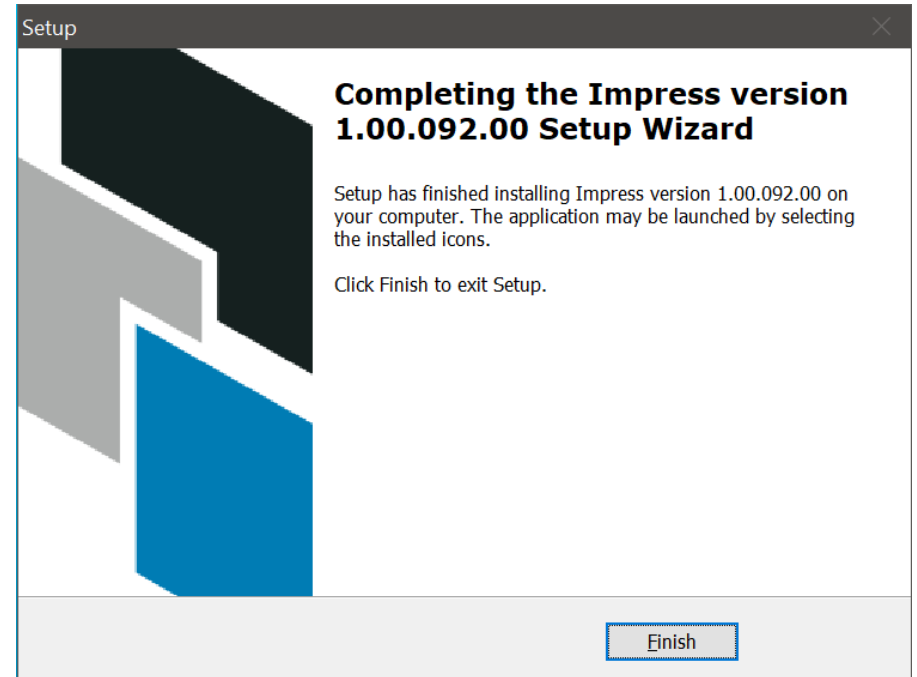
9. Fill in your contact information and select **Finish**. This information will be used to send orders and support information to Crestron Electronics, Inc..



The screenshot shows the 'Impress Install Assistant' window with the 'Contact Information' section. The text reads: 'Please enter your contact information. This will be used when sending orders or product support information to Crestron.' Below this are several input fields: 'First Name', 'Last Name', 'Company', 'Address Line 1', 'Address Line 2', 'Country' (a dropdown menu currently showing 'United States'), 'District', 'City', 'State *' (a dropdown menu), 'Zip/Postal Code', 'Phone', and 'E-mail'. At the bottom right of the window are 'Back' and 'Finish' buttons.

NOTE: Some fields may change depending on the **Country** selected.

10. Select **Finish** and relaunch Impress. By default, the Impress **Start Page** displays.



For more information, refer to the [Impress Product Manual \(Doc. 9377\)](#).

Crestron Custom Engraving Software



Visit the Product Page

Scan the QR code to visit the product page.

Impress



www.crestron.com/model/3002192

Additional Information

The original language version of this document is U.S. English. All other languages are a translation of the original document.

Crestron product development software is licensed to Crestron dealers and Crestron Service Providers (CSPs) under a limited nonexclusive, nontransferable Software Development Tools License Agreement. Crestron product operating system software is licensed to Crestron dealers, CSPs, and end-users under a separate End-User License Agreement. Both of these Agreements can be found on the Crestron website at www.crestron.com/legal/software_license_agreement.

The product warranty can be found at www.crestron.com/warranty.

The specific patents that cover Crestron products are listed online at www.crestron.com/legal/patents.

Certain Crestron products contain open source software. For specific information, please visit www.crestron.com/opensource.

Crestron, the Crestron logo, Crestron Home, and Crestron Studio are either trademarks or registered trademarks of Crestron Electronics, Inc. in the United States and/or other countries. Microsoft is either a trademark or registered trademark of Microsoft Corporation in the United States and/or other countries. Other trademarks, registered trademarks, and trade names may be used in this document to refer to either the entities claiming the marks and names or their products. Crestron disclaims any proprietary interest in the marks and names of others. Crestron is not responsible for errors in typography or photography.

©2023 Crestron Electronics, Inc.

Doc. 9391A

03/15/23