

# Crestron® Support for Windows® SideShow™

## Touchpanels/Display Screens

Support for the Windows SideShow feature enables all Crestron touchpanels and 2-way devices that support dynamic text, such as the APAD wall mount controller and MLX-2 handheld remote, to run SideShow gadgets.

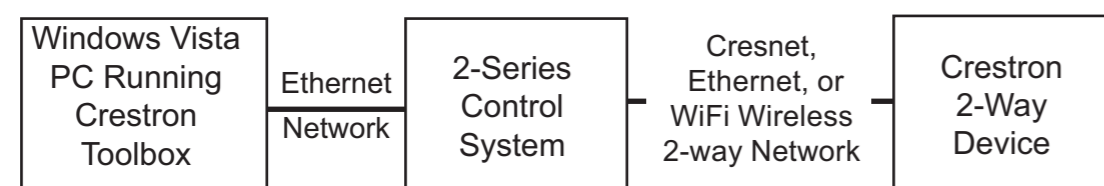
SideShow provides single-byte serial text from the gadgets, allowing you to review stock quotes, e-mail, weather, and more. For example, using the Windows Media Player gadget you can browse song lists as well as select and play them.

### System Requirements:

- Windows PC running any version of Vista beyond Home Basic
- Crestron Control System: Any Crestron 2-Series control system
- Any Crestron 2-way touchpanel or LCD panel

## 1 Getting Started

Connect the Windows Vista PC, Control System, and Crestron 2-way device as shown in the following simplified diagram.



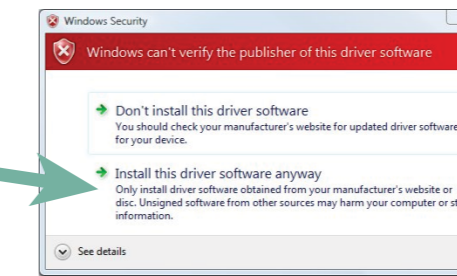
From the PC, download and open the Crestron SideShow WinZip file. The file contains:

- SideShow driver.
- SideShow release notes.
- Sample VT Pro-e projects for the APAD and other touchpanels and 2-way devices such as those listed under System Requirements, above.
- SIMPL™ Windows® program.
- Test Manager signal file.
- SIMPL Windows compiled program.

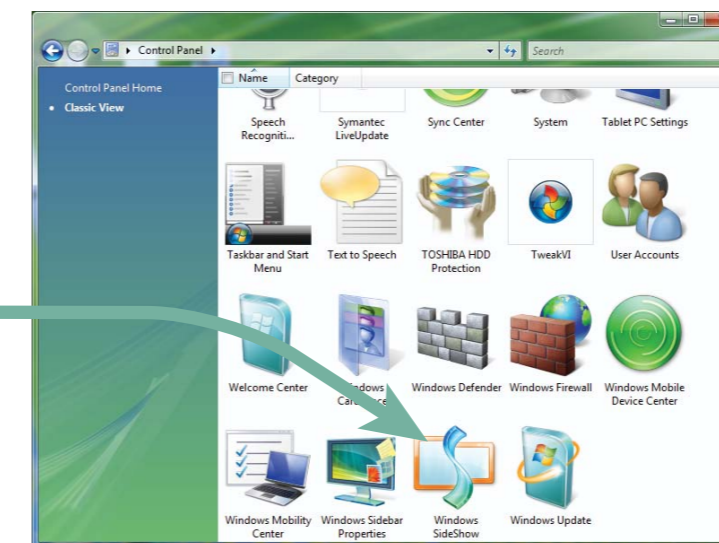
## 2 Install SideShow Driver

Run the CrestronSideshowDriver\_vx.x.x.exe to install an instance of the Crestron SideShow program on the PC.

If the Windows Security screen appears, select "Install this driver software anyway" to continue the installation.

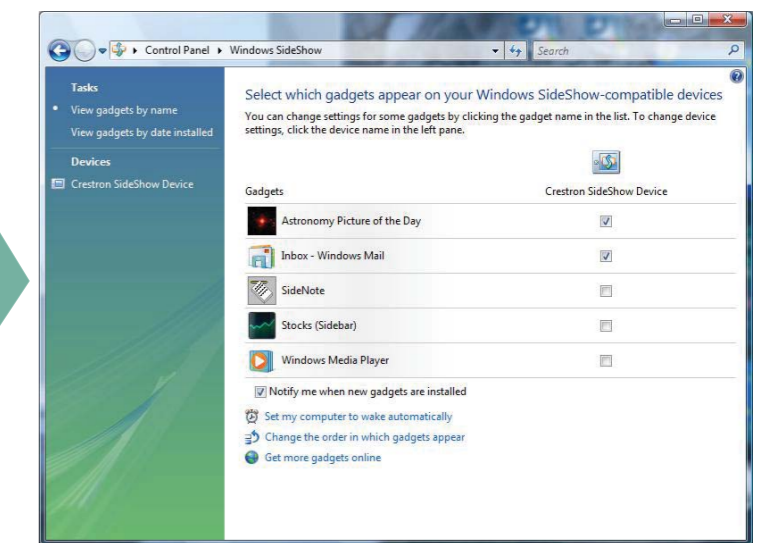
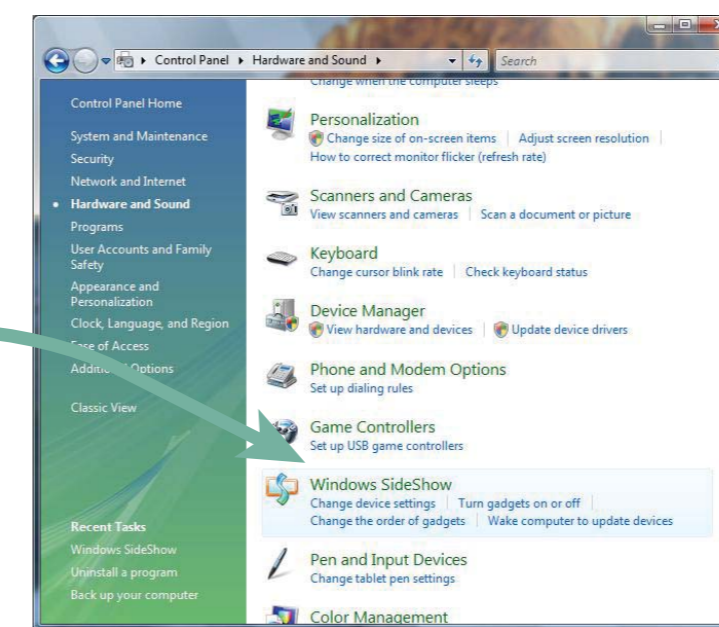


From the Control Panel, Classic View, click the SideShow icon.



OR

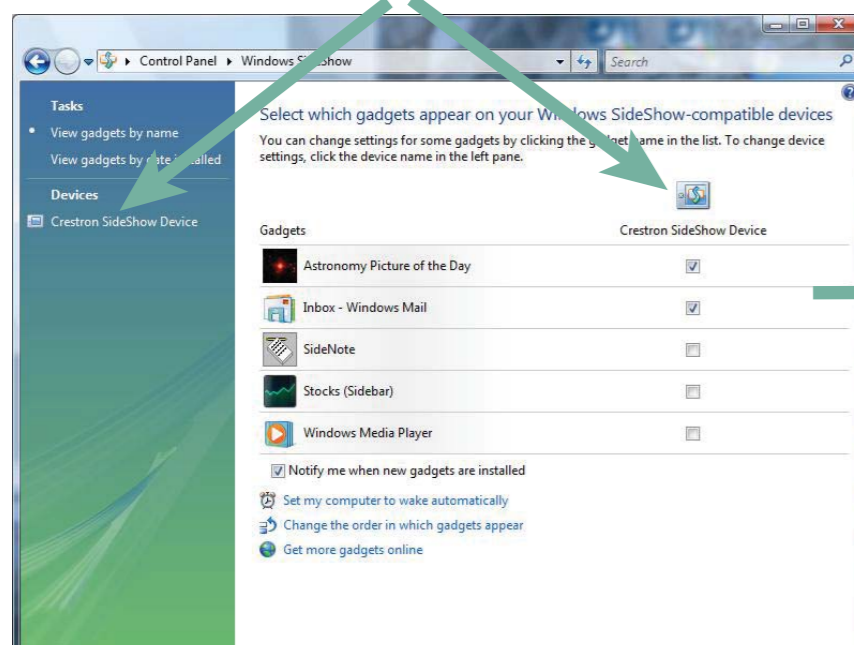
Select Windows SideShow from the Control Panel Home | Hardware and Sound view.



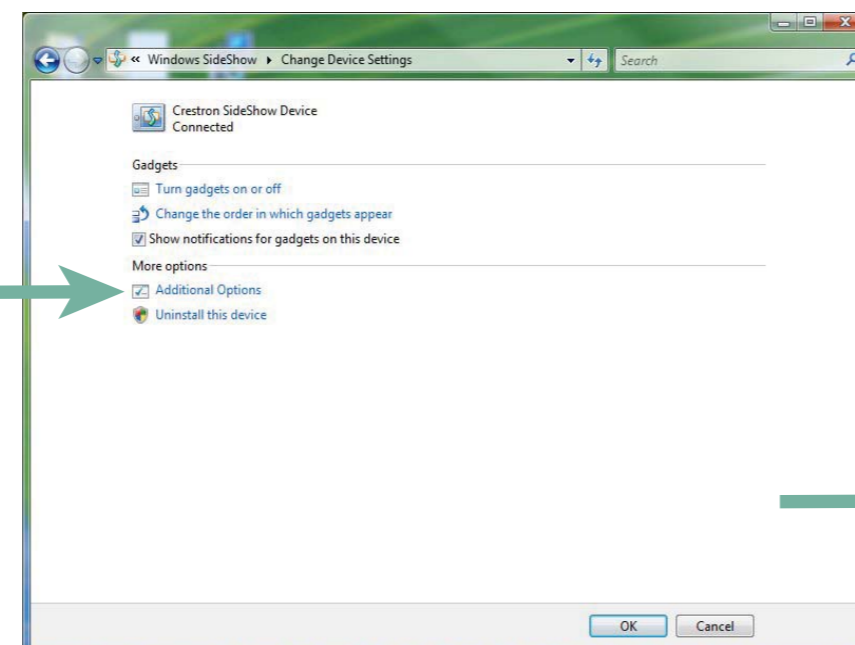
The Windows SideShow screen lists the gadgets available for selection and provides options such as getting more gadgets online.

## 3 Configure the SideShow Device Settings

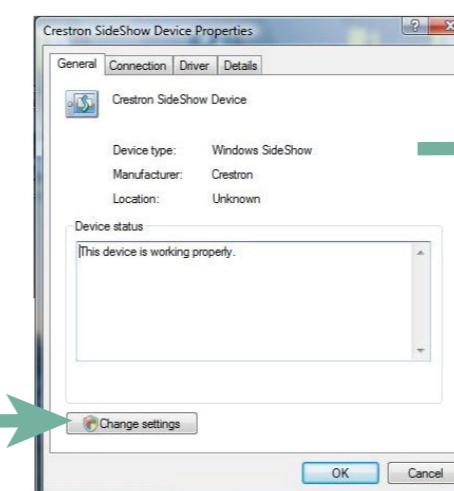
Click on **Crestron SideShow Device**.



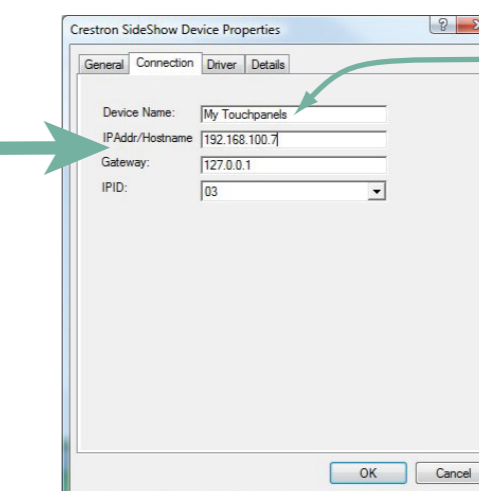
Change device settings as desired, then select **Additional Options**.



On the **General** tab, click the **Change settings** button, and click **OK** to enable entering setting changes for your Crestron SideShow device.



On the **Connection** tab, enter the **Device Name\***, **IP Address** or **Hostname** of the control system, the **Gateway** address, and the **IPID** used in the control system program of the Crestron SideShow device. Check your entries and click **OK**.



\*For systems with multiple SideShow devices, be sure to enter a different **Device Name** for each device.

Continue with Step 4 on Page 2

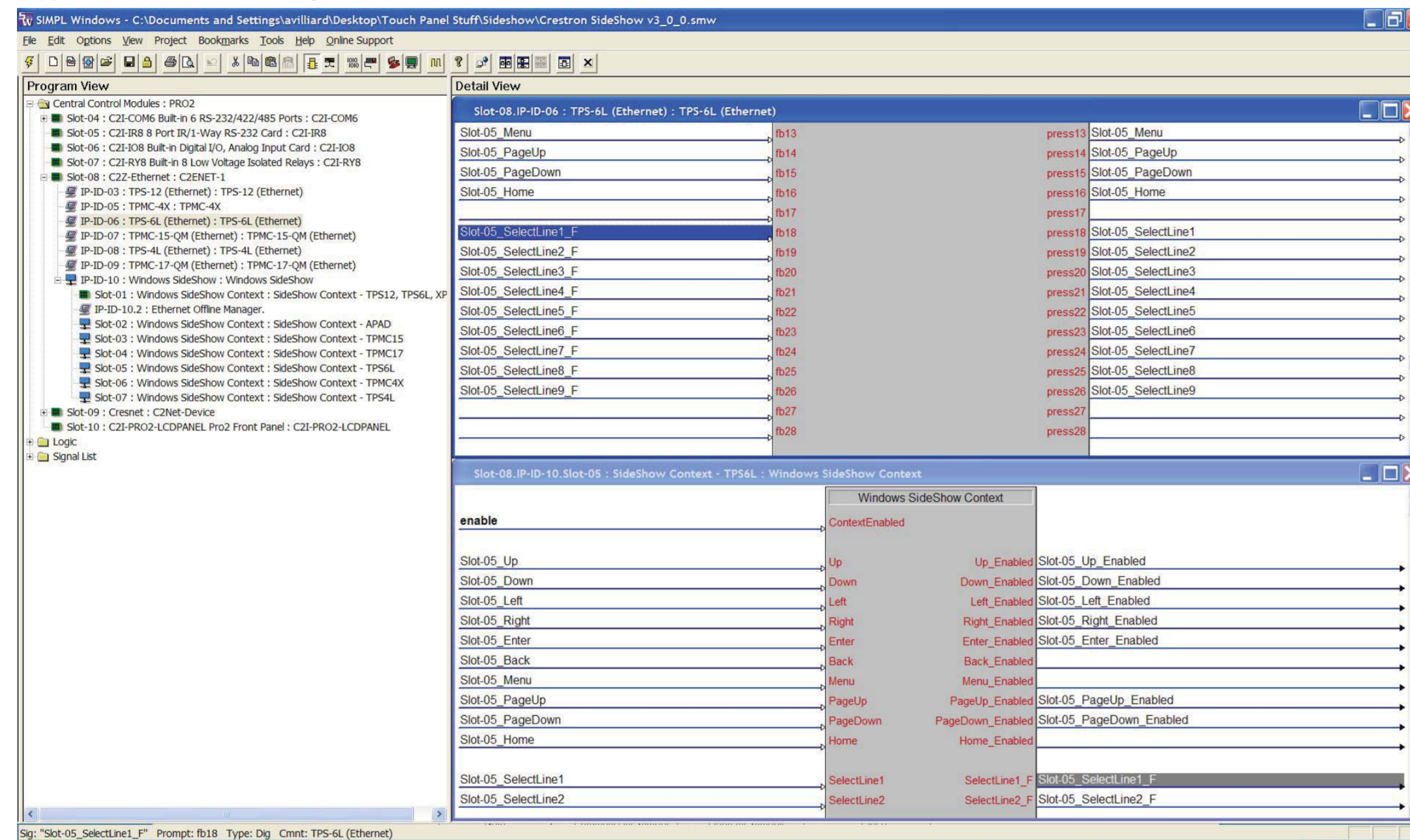
# Crestron® Support for Windows® SideShow™

## Touchpanels/Display Screens

### 4 Develop Custom Program & Project(s)

Using the supplied SIMPL Windows program and VT Pro-e projects as a guide, develop custom projects for your devices and the SideShow gadgets you have chosen.

#### Supplied SIMPL Windows Program for TPS-6L



#### Supplied VT Pro-e Project for TPS-6L



### 5 Upload Sample Programs & Projects

Establish communications between the PC and the control system as described in the latest version of the 2-Series Reference Guide (Doc. 6256), which is available from the Crestron website (<http://www.crestron.com/manuals>).

- Display the network device tree (**Tools | Network Device Tree**); to show all network devices connected to the control system.
- Upload the SIMPL Windows file to the control system using SIMPL Windows or Crestron Toolbox™.
- Upload the VisionTools Pro-e file(s) to the 2-way device(s) using VisionTools Pro-e or the Crestron Toolbox.

For details on uploading and upgrading, refer to the SIMPL Windows help file, VisionTools Pro-e help file, or the Crestron Toolbox help file.

### 6 Typical Application Results



### 7 Operation Basics

To enable continuous SideShow information streaming during normal operation:

- The PC connected to the control system must be left on.
- The PC's sleep and hibernation modes must be disabled.