

# DM-TX Gang Series

## DigitalMedia™ Gang Transmitters

### 1 Rear Panel Connections

Rear panel connections for video, data management, and control and power are via DigitalMedia™ Cable (DM-CBL-P) which has been installed into the electrical boxes. Refer to the illustrations below and do the following:

1. Confirm DMNET system power is OFF.
2. Strip approximately 12 inches (305 mm) of the outer jacket from the DM-CBL-P cable to expose the three inner cables: 'D' (blue), 'M' (yellow), and 'data/control' (gray).
3. Using the illustrations as a guide, route the cables to their connector locations and secure to the threaded studs mounted on the chassis using strain relief clamps and nuts provided.
4. Strip the outer jacket of the blue 'D' cable 1 3/4 inches (45 mm) from the end. Gather and twist the braid.
5. Trim the foil shield to 1/2 inch (13 mm). Refer to the illustration to the right.
6. Remove the white neoprene sheath and separate the twisted pairs to expose the spline. Cut the spline so it is nearly flush with the foil shield. Return twisted pairs to their original position.
7. Neatly wrap the twisted braid around the foil shield. Only the silver side of the foil shield is conductive.

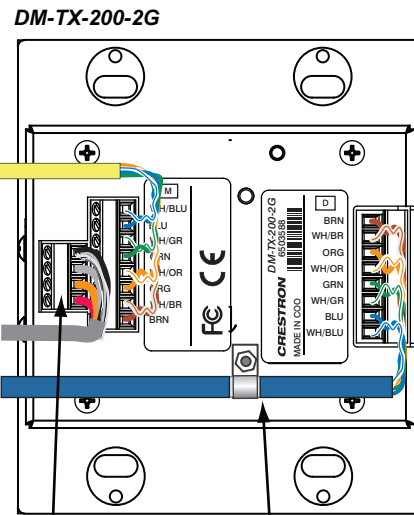
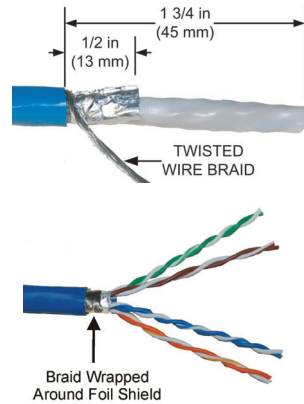
**NOTE:** Braid should wind neatly around foil shield. Loose braid may cause shorts.

8. As shown in the illustrations of the rear panel, carefully remove approximately 1/2 inch (13 mm) section of the outer jacket of the blue 'D' cable at the clamp location to expose the shield braid and allow the clamp to establish chassis ground.
9. Route the twisted pairs to their connector locations (refer to the connector label), trim to appropriate length and strip the wires 1/8 inch (~3 mm). Insert the wires into the appropriate terminals and tighten the screws to hold them in place.

**NOTE:** Maintain equal wire lengths within 1/8 inch (~3 mm).

**NOTE:** Do not allow the twisted pairs to untwist for more than 1/2 inch (13 mm).

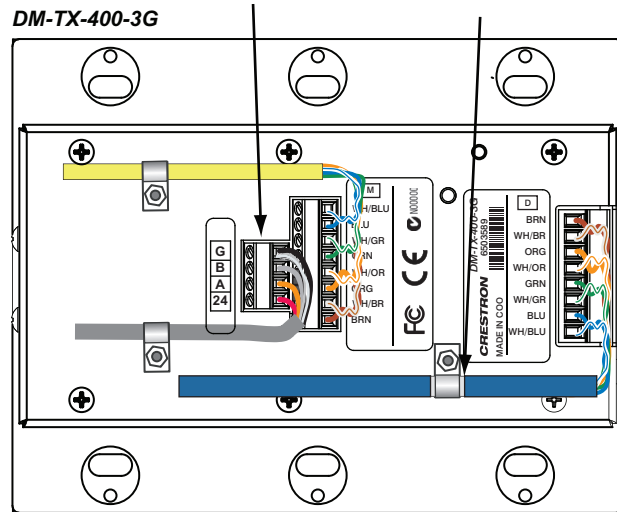
10. Strip approximately 2 inches (51 mm) of the yellow 'M' cable outer jacket.
11. Route the twisted pairs to their connector locations (refer to the connector label), trim to appropriate length and strip the wires 1/8 inch (~3 mm). Insert the wires into the terminals and tighten the screws to hold them in place.
12. Remove approximately 1 inch (26 mm) of the gray data/control cable outer jacket. Trim the foil shield around the orange and gray wires flush to the outer jacket.
13. Route the insulated wires and the bare ground wire to their connector locations. Trim to appropriate length and strip the insulated wires 1/8 inch (~3 mm). Insert the wires into the terminals (the ground wire and the black wire are located together) and tighten the screws to hold them in place.



#### Data/Control Connections

G	Black & Ground
B	Gray
A	Orange
24	Red

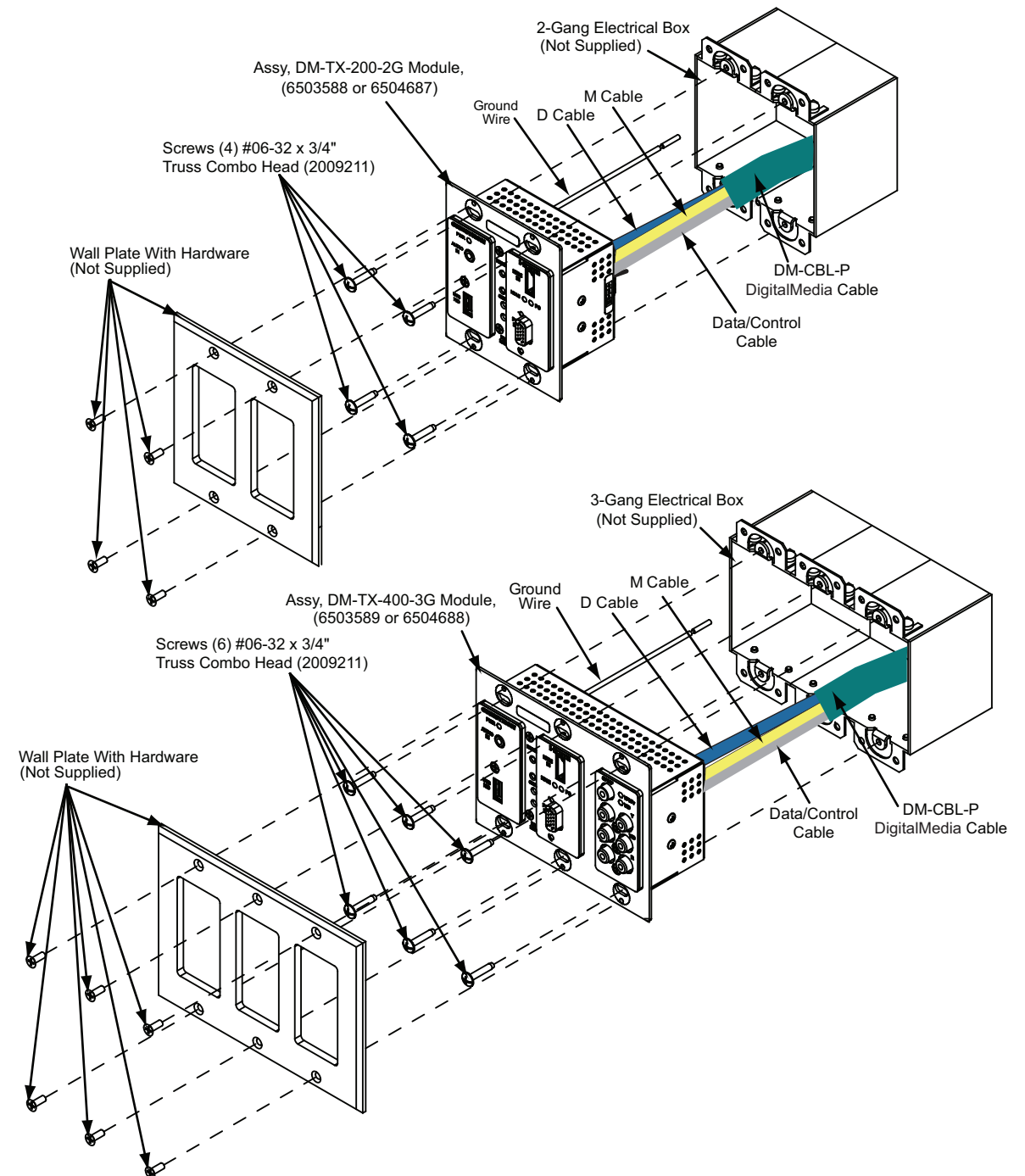
Remove approximately 1/2 inch (13 mm) of the outer jacket to expose the shield braid. Use strain relief clamp to establish chassis ground.



### 2 Mounting

After connecting the DigitalMedia cable to the rear panel connectors, attach the ground wire to the electrical box or to a wire in the electrical box, and mount the gang transmitter in the electrical box using the #06-32 x 3/4" screws provided.

**CAUTION:** Excess wire pinched between the unit and electrical box could cause a short. Make sure all excess wire is completely inside the electrical box, not between the box and the side of the unit.



# DM-TX Gang Series

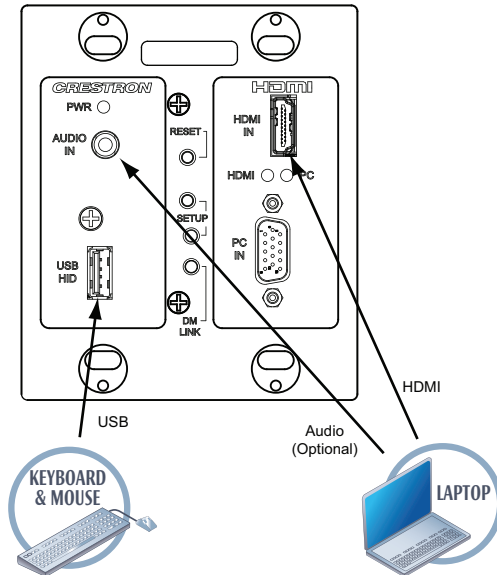
## DigitalMedia™ Gang Transmitters

### 3 Front Panel Connections / Controls / Indicators

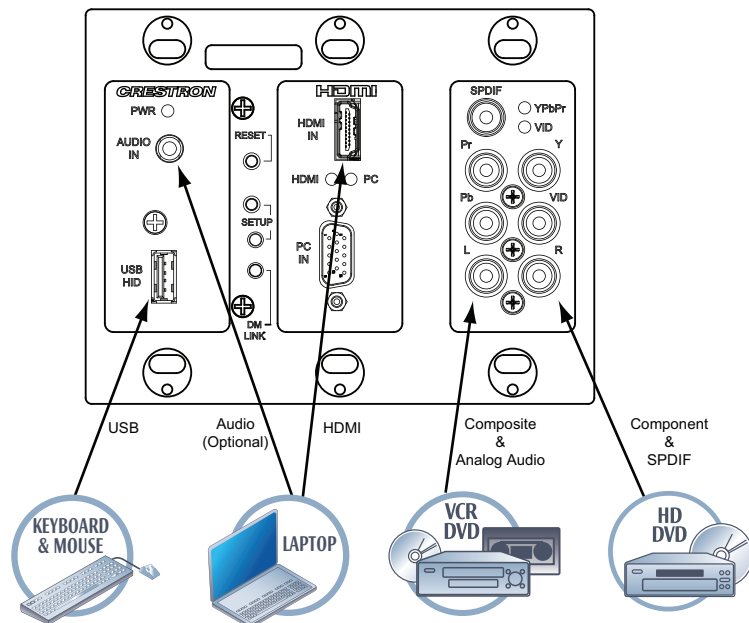
Refer to the illustrations below and use appropriate cables (not supplied) to connect audio, video, data management, and control sources to the DigitalMedia gang transmitters.

Refer to the adjacent table for a description of the LED indications.

#### DM-TX-200-2G Front Panel Connections



#### DM-TX-400-3G Front Panel Connections



DM-TX-200-2G / 400-3G Front Panel Controls & Indicators

DM-TX-200-2G	DM-TX-400-3G	CONTROL/INDICATOR	DESCRIPTION
X	X	PWR	Green led, indicates operating power supplied via DMNet
X	X	RESET	Miniature recessed pushbutton for hardware reset
X	X	SETUP	Red LED and 1 miniature recessed pushbutton for Ethernet auto-discovery
X	X	DM LINK	Green LED, indicates connection to a downstream DM device
X	X	HDMI	Green LED, indicates HDMI input selected
X	X	PC	Green LED, indicates PC input selected
	X	YPbPr	Green LED, indicates YPbPr input selected
	X	VID	Green LED, indicates VID input selected