

1.0 Reference and Address			
Report Number	103669881LAX-001	Original Issued: 10-Dec-2018	Revised: 21-Aug-2019
Standard(s)	Speakers For Commercial And Professional Use [UL 1480A:2016 Ed.1]		
Applicant	<u>Crestron Electronics Inc</u>	Manufacturer	Meida Technology Suzhou Co., Ltd.
Address	15 Volvo Rockleigh, NJ 07647	Address	No. 5 Chun Shen Hu East Road, Xiang Cheng District, Suzhou City, Jingsu Province, China 215131
Country	USA	Country	China
Contact	Mr. Gary Freed	Contact	Mr. Michael Wang Mr. Alex Lhy
Phone	800-237-2041, ext 12305	Phone	86512851888993315 86512851888993315
FAX	N/A	FAX	N/A
Email	gfreed@crestron.com	Email	michael.wang@meida-tech.com.cn alexlhy@meida-tech.com.cn

2.0 Product Description	
Product	In-Ceiling Tile Loudspeaker
Brand name	NA
Description	The product covered by this report is a commercial, indoor use, ceiling speakers intended for the fixed installation in accordance with Article 640 of the National Electrical Code, ANSI/NFPA 70. These products are not intended for mobile use. Dry location only. the units are non-active, meaning they have no connection towards mains supply voltages.
Models	SAROS ICT5T-12-W-T-EACH, SAROS ICT5T-22-W-T-EACH
Model Similarity	Model SAROS ICT5T-22-W-T-EACH is identical to model SAROS ICT5T-12-W-T-EACH, except for the 2x2 construction of the baffle and grill.
Ratings	70/100VAC or 8Ω, 16Wmax
Other Ratings	Frequency range: 70 Hz to 18 kHz

3.0 Product Photographs

Photo 1 - External top view of model SAROS ICT5T-12-W-T-EACH

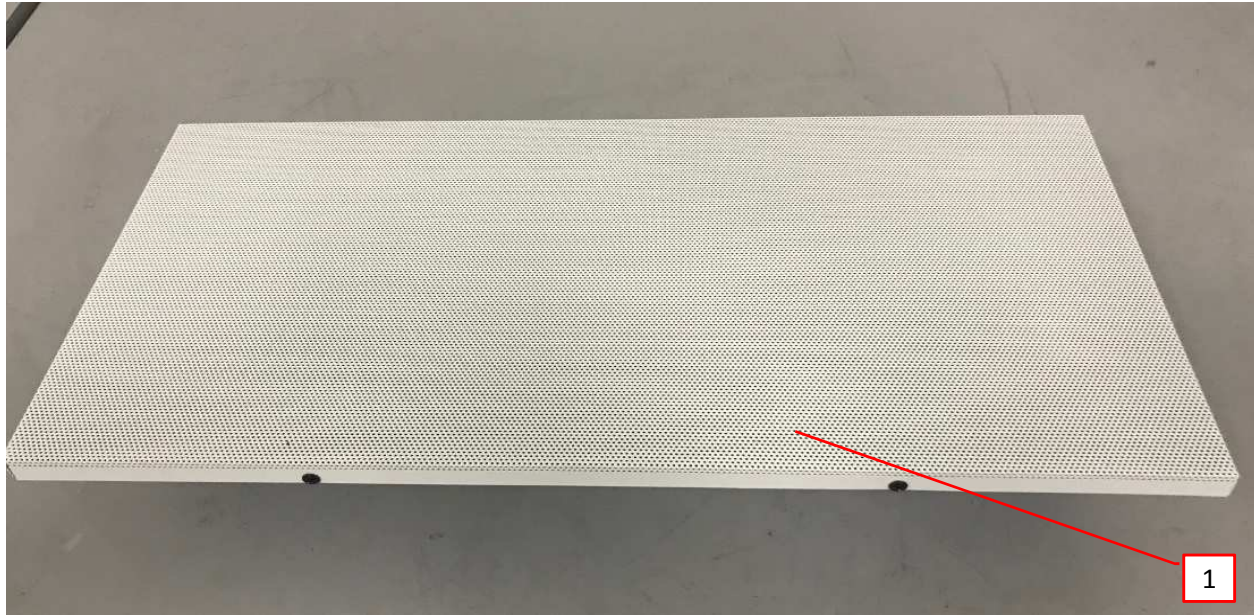


Photo 1a - External top view of model SAROS ICT5T-22-W-T-EACH



3.0 Product Photographs

Photo 2 - External back view of model SAROS ICT5T-12-W-T-EACH

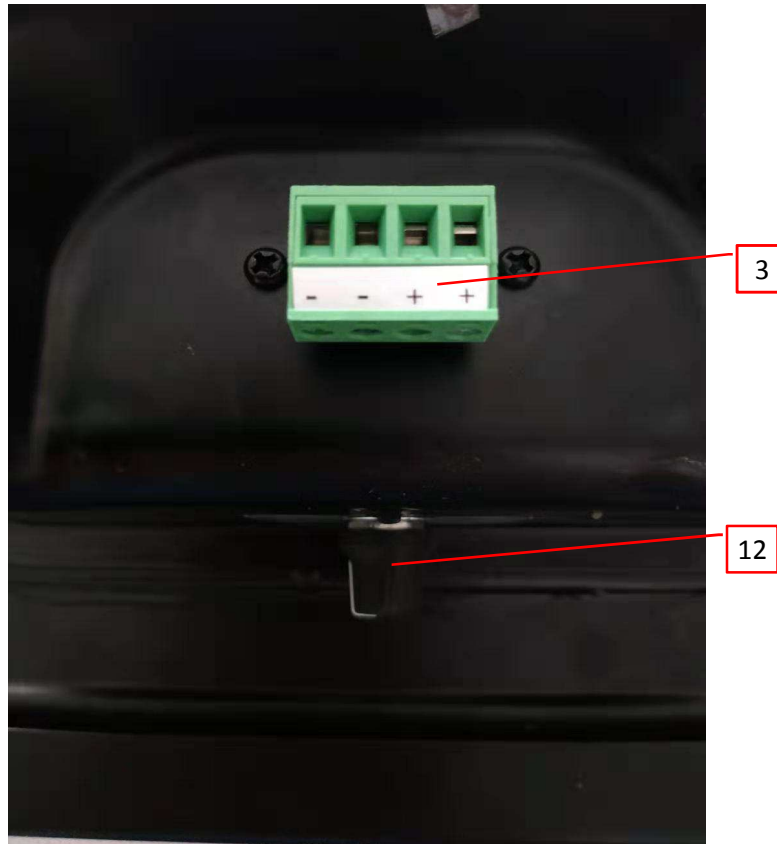


Photo 2a - External back view of model SAROS ICT5T-22-W-T-EACH



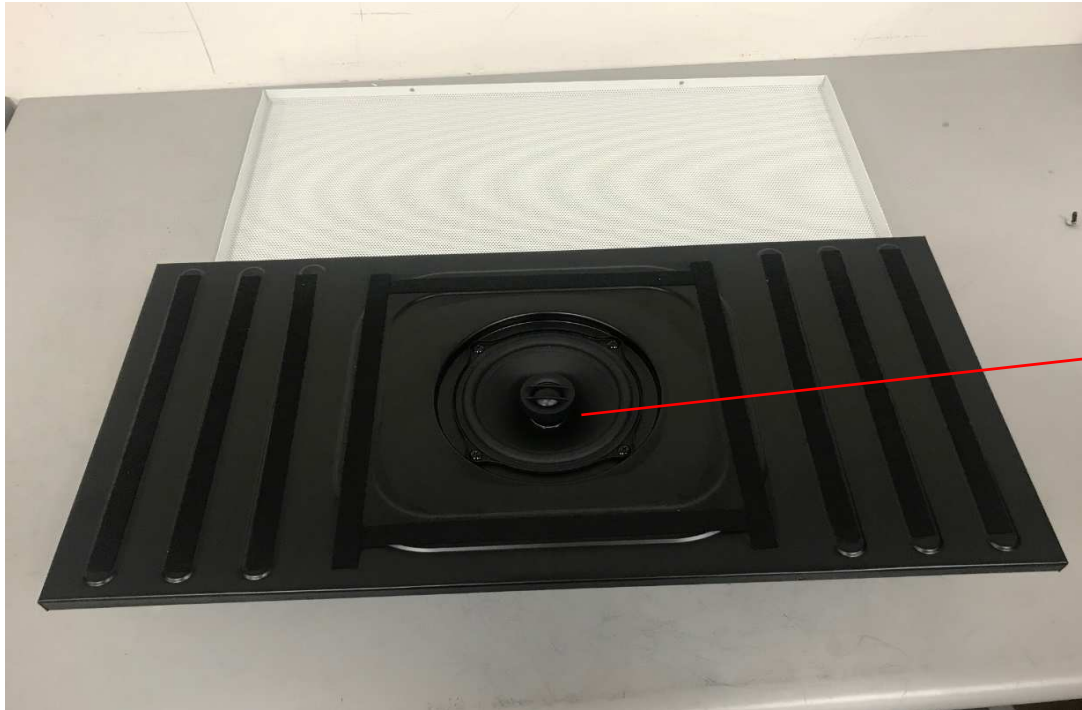
3.0 Product Photographs

Photo 3b - Terminal Block



3.0 Product Photographs

Photo 4 - top view of model SAROS ICT5T-12-W-T-EACH with the grill removed



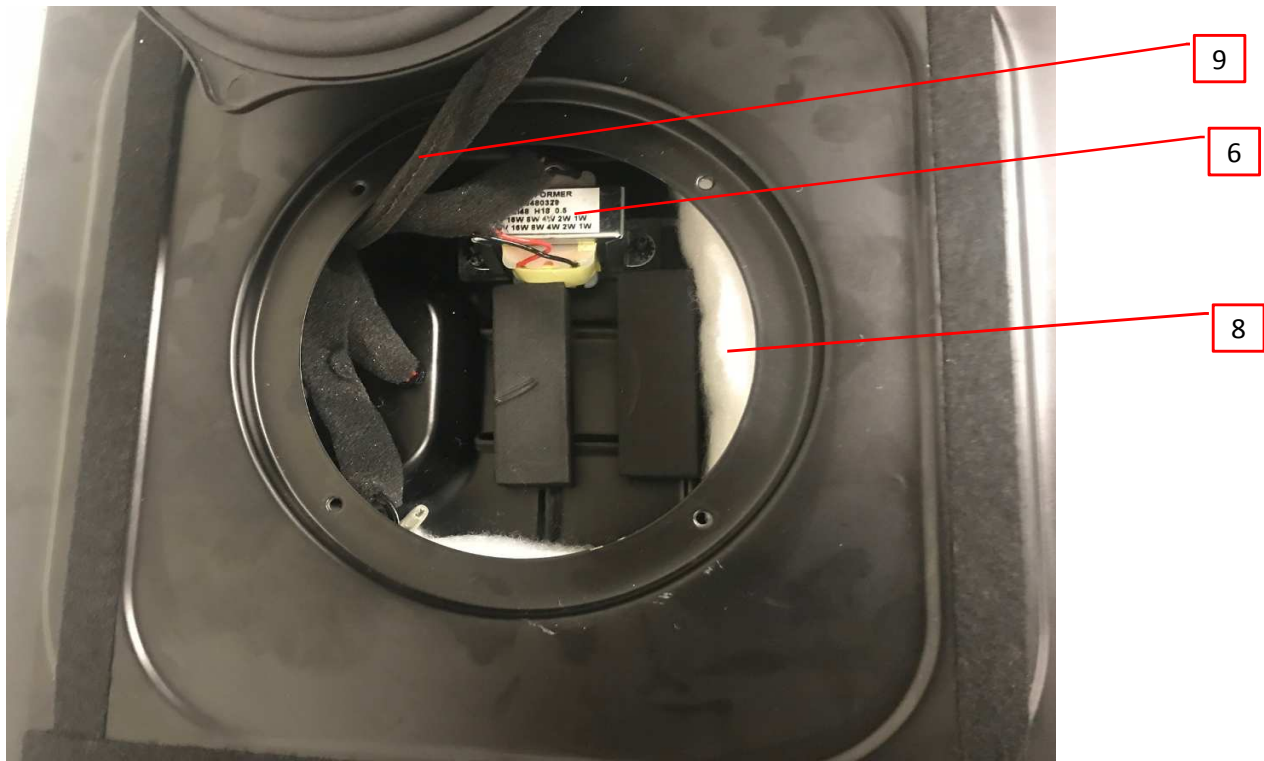
3.0 Product Photographs

Photo 5 - Top internal view of model SAROS ICT5T-12-W-T-EACH



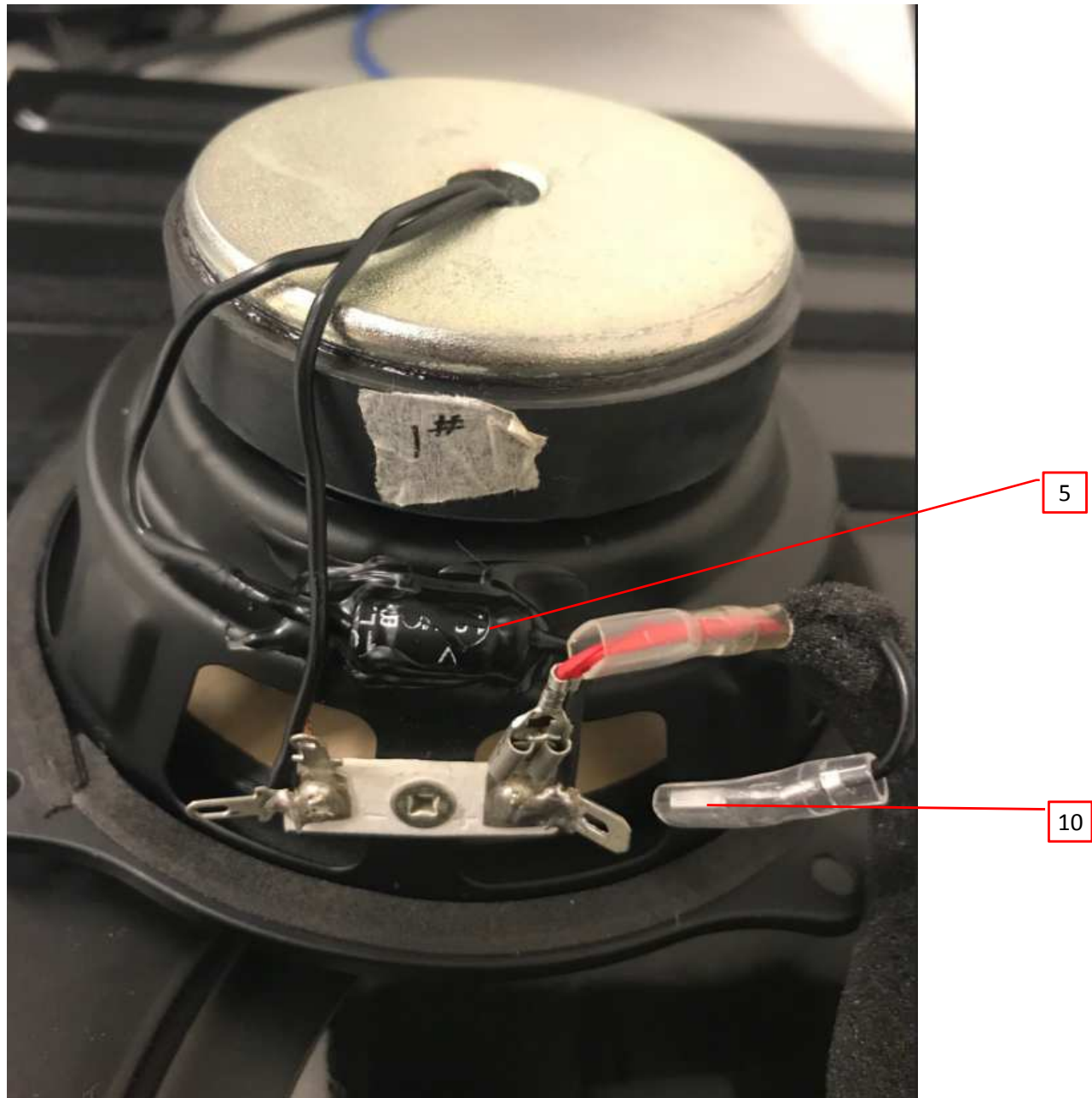
3.0 Product Photographs

Photo 6 - Top internal view of model SAROS ICT5T-12-W-T-EACH



3.0 Product Photographs

Photo 7 -Side view of the speaker



4.0 Critical Components						
Photo #	Item no. ¹	Name	Manufacturer/ trademark ²	Type / model ²	Technical data and securement means	Mark(s) of conformity ³
1, 1a	1	Metal grill	Various	Various	SPCC Refer to illustrations # 1 and 1a	NR
2, 2a	2	Enclosure	Various	Various	SPCC, black powder coated Refer to illustration # 2 and 2a	NR
3a	3	Terminal Block	Various	PA66	12-28AWG, 15A, 300V, V-0, 105°C.	cURus
4, 5	4	Speaker woofer	Meiloon	WF	5.25" woofer 8ohm. Refer to illustration # 4	NR
5, 7	5	Capacitor	Shenzhen Hao Junxing Electronics Co., Ltd.	YC2018091101	1uF/100V	NR
5, 6	6	Matching transformer	Shanghai Sucheng Electric Co., LTD	WJ0480329	70/100Vac, 16W refer to illustration # 3	NR
3a	7	Internal Wires (Not Shown)	Various	AWM 1007	300V, 22AWG, VW-1, 80°C	cURus
6	8	Insulation	Suzhou Banlan Electronic Technology co. LTD	Various	Sound-absorbing cotton . Rated V-0.	cURus
6	9	Wires insulation	Suzhou Shun hon Eletronics	EVA Foam	Polymer of polyvinyl acetate. Rated V-0	cURus
7	10	Terminal Insulation	Yueqing Tianda Electronic Sheath CO., LTD	Various	Rated V-0	cURus
1	11	Marking Label (Not Shown)	Various	Various	SILVER POLYESTER, .002" THK WITH PERMANENT ACRYLIC ADHESIVE	cURus
3a	12	Rotary Switch	Taiwan SWVR Enterprise Co. Ltd.	SR25	125Vac, 0.3A, 55°C,	NR

NOTES:

- 1) Not all item numbers are indicated (called out) in the photos, as their location is obvious.
- 2) "Various" means any type, from any manufacturer that complies with the "Technical data and securement means" and meets the "Mark(s) of conformity" can be used.
- 3) Indicates specific marks to be verified, which assures the agreed level of surveillance for the component. "NR" - indicates Unlisted and only visual examination is necessary. "See 5.0" indicates Unlisted components or assemblies to be evaluated periodically refer to section 5.0 for details.

5.0 Critical Unlisted CEC Components

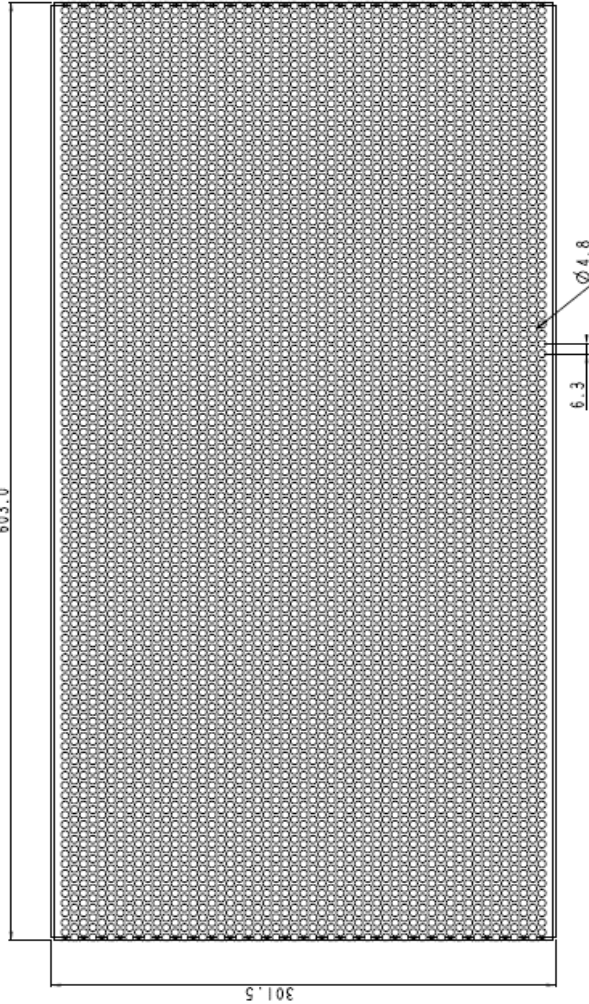
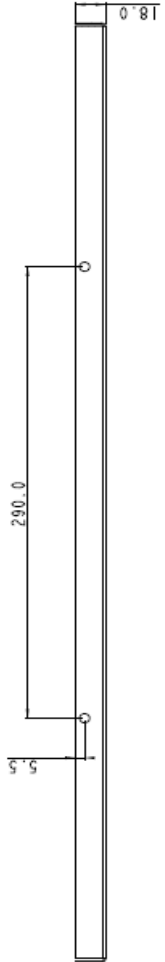
No Unlisted CEC components are used in this report.

6.0 Critical Features
<p><u>Recognized Component</u> - A component part, which has been previously evaluated by an accredited certification body with restrictions and must be evaluated as part of the basic product considering the restrictions as specified by the Conditions of Acceptability.</p>
<p><u>Listed Component</u> - A component part, which has been previously Listed or Certified by an accredited Certification Organization with no restrictions and is used in the intended application within its ratings.</p>
<p><u>Unlisted Component</u> - A part that has not been previously evaluated to the appropriate designated component standard. It may also be a Listed or Recognized component that is being used outside of its evaluated Listing or component recognition.</p>
<p><u>Critical Features/Components</u> - An essential part, material, subassembly, system, software, or accessory of a product that has a direct bearing on the product's conformance to applicable requirements of the product standard.</p>
<p><u>Construction Details</u> - For specific construction details, reference should be made to the photographs and descriptions. All dimensions are approximate unless specified as exact or within a tolerance. In addition to the specific construction details described in this Report, the following general requirements also apply.</p>
<p>1. <u>Spacing</u> - In primary circuits, 1.6 mm minimum spacing are maintained through air and over surfaces of insulating material between current-carrying parts of opposite polarity and 12.7 mm minimum between such current-carrying parts and dead-metal parts or low voltage isolated circuits.</p>
<p>2. <u>Mechanical Assembly</u> - Components such as switches, fuseholders, connectors, wiring terminals and display lamps are mounted and prevented from shifting or rotating by the use of lockwashers, starwashers, or other mounting format that prevents turning of the component.</p>
<p>3. <u>Corrosion Protection</u> - All ferrous metal parts are protected against corrosion by painting, plating or the equivalent.</p>
<p>4. <u>Accessibility of Live Parts</u> - All uninsulated live parts in primary circuitry are housed within a metal enclosure constructed with no openings other than those specifically described in Sections 4 and 5.</p>
<p>5. <u>Grounding</u> - This product is not provided with a means of grounding as it is not required to be grounded since connected to low voltage audio circuits.</p>
<p>6. <u>Polarized Connection</u> - NA</p>
<p>7. <u>Internal Wiring</u> - Internal wiring is routed away from sharp or moving parts. Internal wiring leads terminating in soldered connections are made mechanically secure prior to soldering. Recognized Component separable (quick disconnect) connectors of the positive detent type, closed loop connectors, or other types specifically described in the text of this report are also acceptable as internal wiring terminals. At points where internal wiring passes through metal walls or partitions, the wiring insulation is protected against abrasion or damage by plastic bushings or grommets. All wiring is minimum 22 AWG, with a minimum rating of 300V, 80°C.</p>
<p>8. <u>Schematics</u> - NA</p>
<p>9. <u>Markings</u> - The product is marked on a labeling system as described in item no. 11 of Section 4.0 as follows: brand name, model number, date of manufacturer, electrical ratings.</p>
<p>10. <u>Cautionary Markings</u> - N/A</p>
<p>11. <u>Installation, Operating and Safety Instructions</u> - Instructions for installation and use of this product are provided by the manufacturer. Refer to Illustration No(s). 5 and 6 for details.</p>

7.0 Illustrations

Illustration 1 - Metal Grill

編號 NO.	版本 REVISION	日期 DATE	訂正者 NAME
A01	初次發行	Sep-27-17	

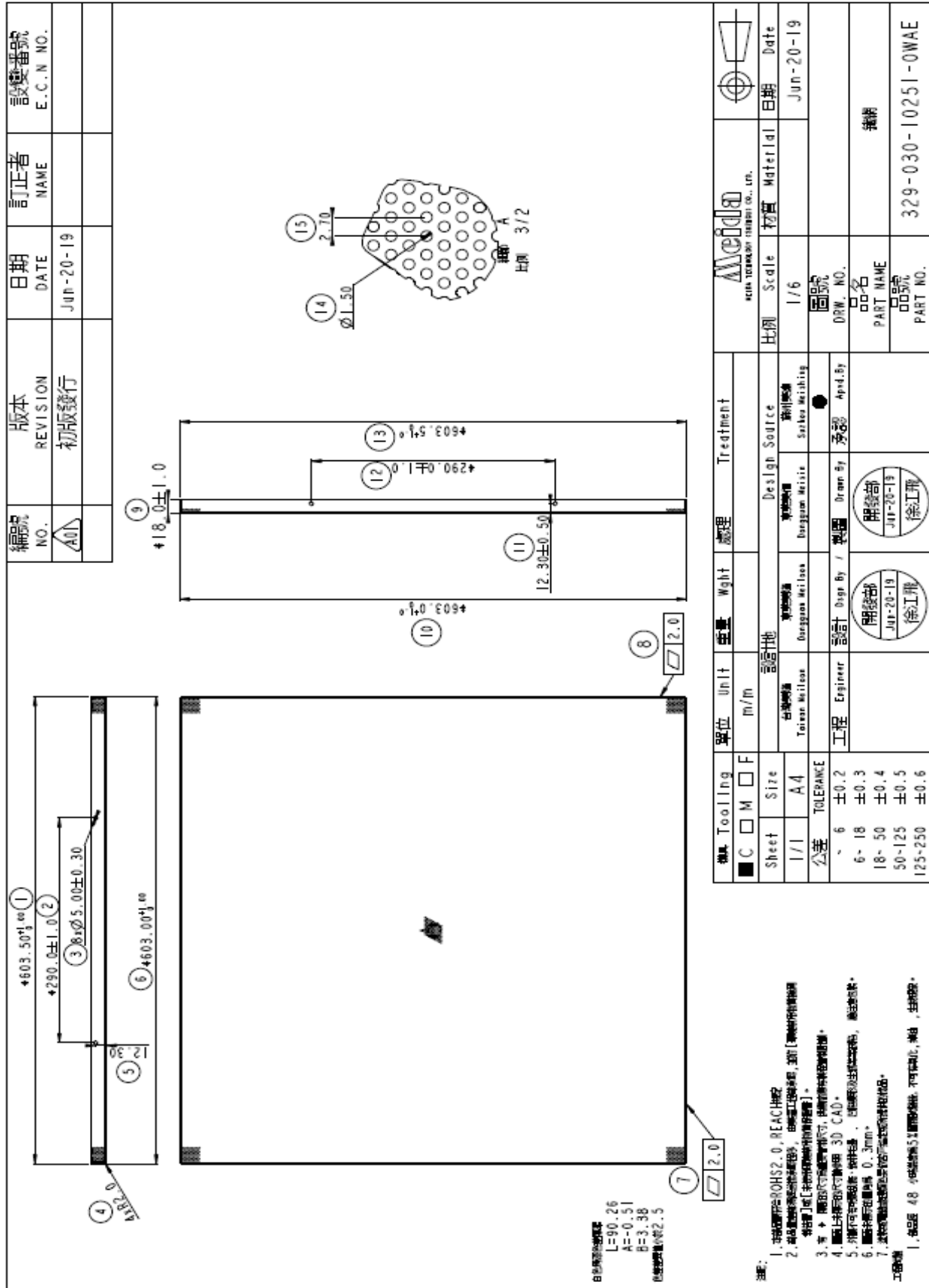


- 註:
1. 本規格符合RoHS2.0限制REACH 規定
 2. 產品應符合RoHS2.0限制REACH 規定，在製造工廠時，並持【RoHS2.0限制REACH 符合聲明】或【RoHS2.0限制REACH 符合聲明】。
 3. 至 4 種送貨方式，請洽詢代理商，以瞭解詳情。
 4. 本規格以 AutoCAD 3D CAD。
 5. 外圍尺寸應符合。
 6. 本規格應在製造時，應持【RoHS2.0限制REACH 符合聲明】。
 7. 應持【RoHS2.0限制REACH 符合聲明】。
- 工廠備
1. 產品 48 小時內，應持【RoHS2.0限制REACH 符合聲明】。

Tooling	單位	重量	處理	Treatment
OC	M	OF		表面噴漆
Sheet	Size	Design	Source	材料
1/1	A3	1/3	SPCC 0.	

7.0 Illustrations

Illustration 1a - Metal Grill of model SAROS ICT5T-22-W-T-EACH

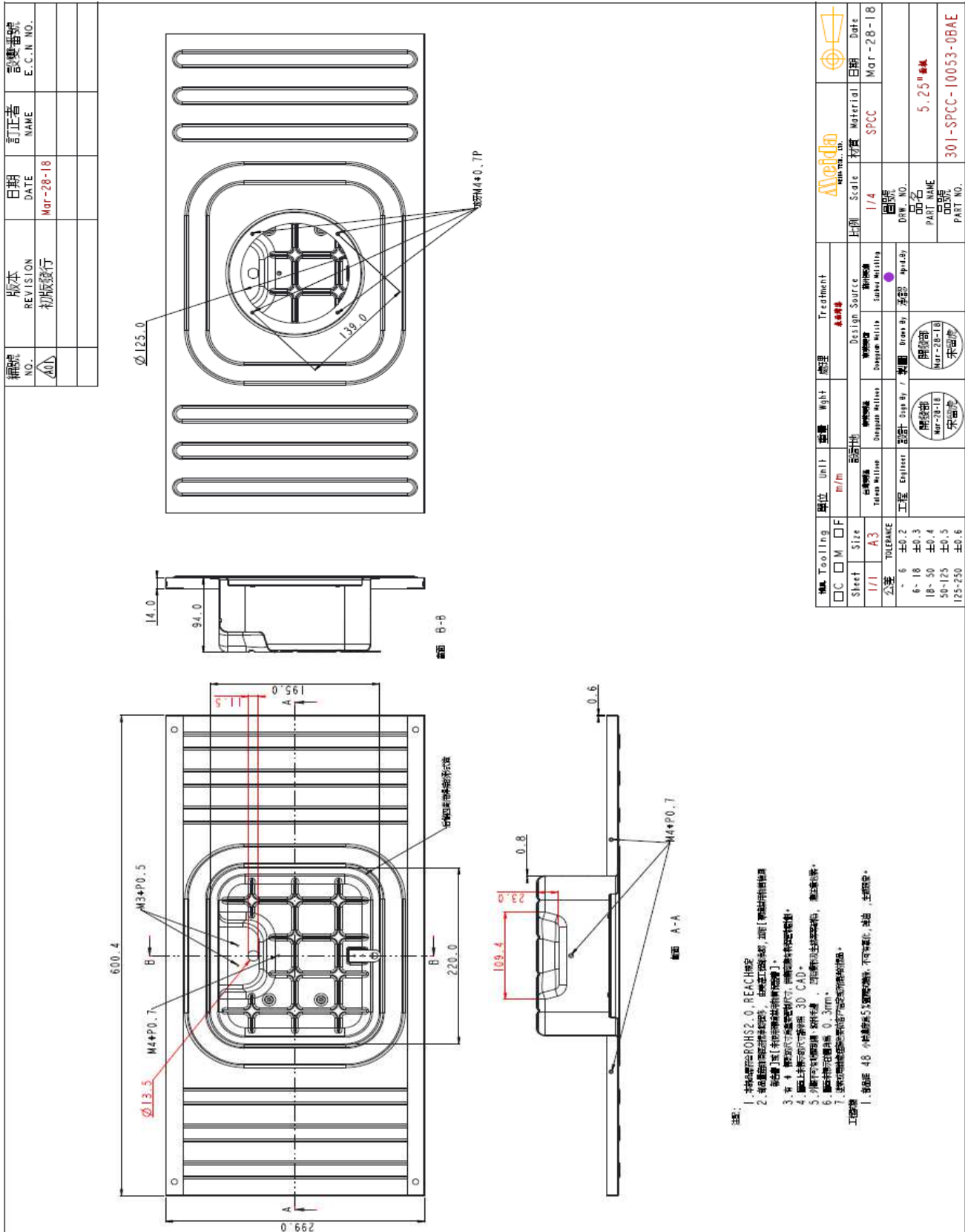


編號 NO.	版本 REVISION	日期 DATE	訂正者 NAME	設變番號 E.C.N NO.
401	初版發行	JUN-20-19		
物料 MATERIAL	單位 UNIT	重量 WGT	處理 TREATMENT	圖號 DRAW. NO.
C	m/m			329-030-10251-0WAE
Sheet	Size	公差	工程	備用
1/1	A4	±0.2	18-50	
1/1	A4	±0.3	50-125	
1/1	A4	±0.4	125-250	
1/1	A4	±0.5		
1/1	A4	±0.6		
圖號 DRAW. NO.	比例 SCALE	材質 MATERIAL	日期 DATE	
329-030-10251-0WAE	1/6		Jun-20-19	
品名 PART NAME	品號 PART NO.	品名 PART NAME	品號 PART NO.	
金屬網	329-030-10251-0WAE	金屬網	329-030-10251-0WAE	
設計 DESIGN	製圖 DRAW	承認 APPROVE	日期 DATE	
徐江飛	徐江飛	徐江飛	JUN-20-19	

注：
1. 本圖係採用PROHS2.0, REAC繪製
2. 本圖係採用PROHS2.0, REAC繪製，由電腦生成，並非【繪圖軟件繪製】。
3. 本圖係採用PROHS2.0, REAC繪製，由電腦生成，並非【繪圖軟件繪製】。
4. 圖上所有尺寸均採用 3D CAD。
5. 所有尺寸均採用公制，單位為 mm。
6. 圖上所有尺寸均採用 0.3mm。
7. 本圖係採用PROHS2.0, REAC繪製，由電腦生成，並非【繪圖軟件繪製】。
工程號
1. 備品 48 小區號 51 圖號 329-030-10251-0WAE, 備品, 生料號-

7.0 Illustrations

Illustration 2 - Enclosure Drawing



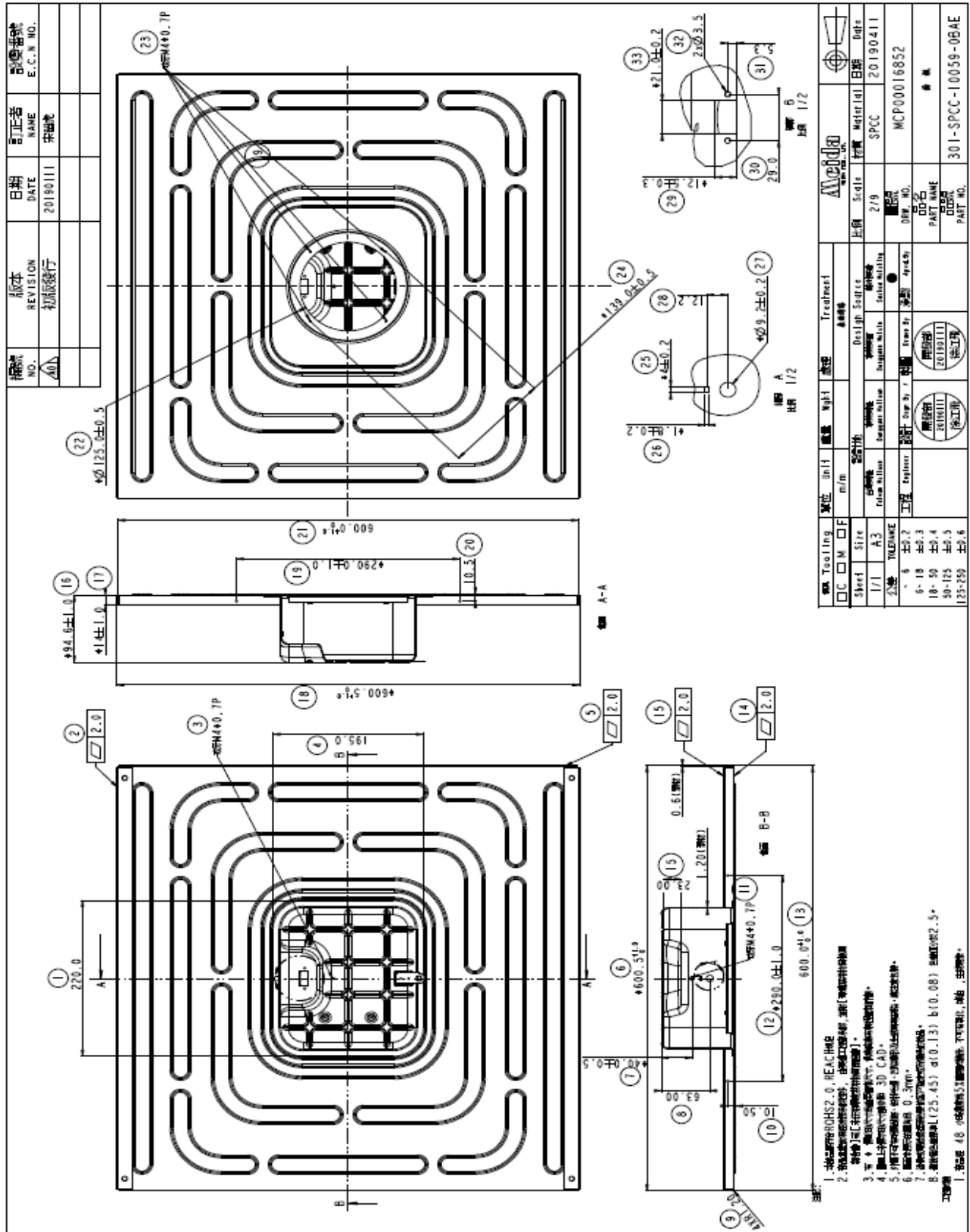
編號 NO.	版本 REVISION	日期 DATE	訂正者 NAME	圖號 E.C.N. NO.
ADN	初版發行	Mar-28-18		

Max. Tooling	單位	重量	處理	Treatment
<input type="checkbox"/> C <input type="checkbox"/> M <input type="checkbox"/> F	m/m		▲噴漆	
Sheet	設計地	製圖地	Design Source	比例
1/1	A3			1/4
公差	TOLERANCE	公差	公差	材料
-6 ±0.2	±0.2	±0.3	±0.4	SPCC
6-18 ±0.3	±0.4	±0.5	±0.6	5.25" 鋼板
18-50 ±0.4	±0.5	±0.6	±0.7	301-SPCC-10053-0BAE
50-125 ±0.5	±0.6	±0.7	±0.8	
125-250 ±0.6	±0.7	±0.8	±0.9	
工程	工程師	設計	設計	日期
				Mar-28-18
圖名	零件號	零件號	零件號	圖號
				10053-0BAE

- 注意:
1. 本規格符合ROHS2.0, REACH規定
 2. 所有圖面均採用公制單位, 除特別註明外, 均採用公制單位
 3. 所有尺寸均採用公制單位, 除特別註明外, 均採用公制單位
 4. 圖上所有尺寸均採用3D CAD
 5. 所有尺寸均採用公制單位, 除特別註明外, 均採用公制單位
 6. 圖面所有尺寸均採用公制單位, 除特別註明外, 均採用公制單位
 7. 圖面所有尺寸均採用公制單位, 除特別註明外, 均採用公制單位
- 工程師: 1. 圖面係 4B 小繪圖紙, 5% 縮小繪圖, 不可放大, 輸出, 印刷等。

7.0 Illustrations

Illustration 2a - Enclosure Drawing of model SAROS ICT5T-22-W-T-EACH



7.0 Illustrations

Illustration 3 - Transformer internal component

JUST-FOR-YOU ENTERPRISE CO., LTD.

WJ0480327

ITEM	PART NAME	Material	Safety Standard	Manufacture
1	Core	E-I Laminated Silicon Steel. EI-48 (18/0.5A)		Nippon Steel Corporation.
2	Priamry winding	Polyurethane Enameled Copper Wire. xUEW/130 MW 75-C UEW(MW75 130°C)	E227047 E214423	NINGBO JINTIAN NEW MATERIAL CO LTD Shang Hai Pacific Electric Co., Ltd
3	Bobbin	UL Recognized Plastic. PA66 101L (+) (F1)	E 41938	EI DUPONT DE NEMOURS & CO., INC.
4	Secondary Winding	Polyurethane Enameled Copper Wire. xUEW/130 MW 75-C UEW(MW75 130°C)	E227047 E214423	NINGBO JINTIAN NEW MATERIAL CO LTD Shang Hai Pacific Electric Co., Ltd
5	Input Lead Wire	UL&CSA 1007AWG22	E251538 E170689	JIANGSU ELECO ELECTRONICS TECHNOLOGY CO LTD. ZHEJING XINYA ELECTRNIC CO., LTD or EQUAL
6	Pri. Outer Wrap	Polyester Insulating Tape 0.025mm Polyester Tape/5 Turns. Cat. No. :P2XXF (b) RATED 130C Cat. No. CT-280B 0.38mm Pressed Paper/4 Pieces.	E81174 E165111	CHYUN YIH TAPE CO LTD JINGJIANG YAHUA PRESSURE SENSITIVE GLUE CO., Ltd
7	Sec. Outer Wrap	Polyester Insulating Tape 0.025mm Polyester Tape/3 Turns. Cat. No. :P2XXF (b) RATED 130C Cat. No. . CT-280B	E81174 E165111	CHYUN YIH TAPE CO LTD JINGJIANG YAHUA PRESSURE SENSITIVE GLUE CO., Ltd
8	Crossover insulation	0.18*2 or 0.35mm Acetate Cloth tape Cat. No. :AC-403-1 RATED 105°C Cat. No. :ACO*rated 130 C	E81174 E50292	CHYUN YIH TAPE CO LTD SYMBIO INC
9	Output Lead Wire	UL&CSA AWG 1007#22	E251538 E170689	JIANGSU ELECO ELECTRONICS TECHNOLOGY CO LTD. ZHEJING XINYA ELECTRNIC CO., LTD or EQUAL
10	Endbell`	Steel		De Shuen Metal Manu Factory.
11	Varnishes	T4260 (a)	E228349	SUZHOU TAIHU ELECTRIC ADVANCED MATERIAL CO LTD

7.0 Illustrations

Illustration 4 - Woofer

編號 NO.	版本 REVISION	日期 DATE	訂正者 NAME	設變番號 E.C.N. NO.
AD1	初版發行	Jul-19-18		

鋼 Tooling <input type="checkbox"/> C <input type="checkbox"/> M <input type="checkbox"/> F	單位 Unit m/m	重量 Weight	處理 Treatment
Sheet Size I/I A4	設計地 Design Source Taiwan Mellrose Design Melrose Design Melrose	設計 Design By 宋留虎	製圖 Drawn By 宋留虎
公差 TOLERANCE 6 ±0.2 18-50 ±0.3 50-125 ±0.4 125-250 ±0.6	工程 Engineer	審核 Check By 宋留虎	製圖 Date Jul-19-18

Medlan
WORLD TRADEMARK TRADESHOW CO., LTD.

比例 Scale: 1/1
 日期 Date: Jul-19-18
 品名 PART NAME: woofer 6510077
 品號 PART NO.

7.0 Illustrations

Illustration 5a -Installation Instructions

SAROS ICT15T-12-W-T-EACH+*/SAROS ICT15T-22-W-T-EACH+*

Saros® In-Ceiling Tile Loudspeakers

The Saros ICT15T loudspeakers are designed for installation in a suspended ceiling grid using TE/TH or, in some cases, 2 ft x 2 ft or 2 ft x 4 ft tiles. With a 4 in. overall height, the loudspeaker has a very low profile and can be installed in a standard grid with no down space.

The ICT15T-Q is a 1 ft x 2 ft in-ceiling tile loudspeaker while the ICT15T is a 2 ft x 2 ft in-ceiling tile loudspeaker.

Quick Start

Check the Box

Item	Qty
SAROS ICT15T-12-W-T-EACH+*	2
Cross Tee, 2 ft	2
SAROS ICT15T-22-W-T-EACH+*	2
Cross Tee, 2 ft	2

Install the Speaker

Required Tools/Recommended Accessories

- Utility knife
- Flat blade screwdriver
- #1 Phillips screwdriver
- SIWA-S1-15 Safety Tether/Tie Down Kit (sold separately)

Install the Loudspeaker

The ICT15T-Q loudspeaker has the following dimensions for installation in a 2 ft x 2 ft or 2 ft x 4 ft suspended ceiling grid.

The ICT15T-22 loudspeaker has the following dimensions for installation in a 2 ft x 2 ft or 2 ft x 4 ft suspended ceiling grid.

- Remove a 2 ft x 2 ft or 2 ft x 4 ft tile from the suspended ceiling grid.
- When installing the loudspeaker in a tile space that is larger than the loudspeaker, use a utility knife to cut a 1 ft x 2 ft (for the 1 ft x 2 ft loudspeaker) or a 2 ft x 2 ft (for the 2 ft x 2 ft loudspeaker) section from the end of the tile.
- When installing the loudspeaker in a tile space that is larger than the loudspeaker, install the included cross tee in the grid so the loudspeaker and ceiling tiles are supported on four sides.

Install cross tee (ICT15T-Q shown)

NOTE: The loudspeaker is designed for use with a suspended ceiling grid with 15/16 in. cross tees.

- Return the remaining ceiling tile to the suspended ceiling grid and place the loudspeaker in the new opening on the grid.
- To secure the loudspeaker and make the loudspeaker terminations, temporarily remove an adjacent tile for access to the area above the loudspeaker.
- Secure the loudspeaker to the building structure above using SIWA-S1-15 Safety Tether/Tie Down Kit (sold separately) or ceiling grid hanger wire.

7.0 Illustrations

Illustration 6a -Installation Instructions (Continues)

Secure the Loudspeaker (ICT5T-12 shown)

CAUTION: When attaching the loudspeaker to the building structure, always observe local building codes for compliance with the authority having jurisdiction.

NOTE: Secure the loudspeaker at the corner points for optimal installation. At a minimum, secure the tab located at the top of the loudspeaker.

Connect the Loudspeaker

- Use a #1 Phillips screwdriver to remove the two screws securing the terminal block cover, and remove the terminal block cover as shown in the diagram below. The terminal block is revealed.

Remove terminal block cover (ICT5T-12 shown)

5. The loudspeaker uses a rotary switch to select between low impedance and high impedance operation. Turn the knob to select the operating mode.

6. Replace all wiring that was removed during installation.

Additional Information

Scan or click the QR code for detailed product information.

SAROS ICT5T-12-W-1-EACH* SAROS ICT5T22-W1-EACH*

2. Remove a knot/loop from the terminal block cover and feed the speaker wire through the terminal block cover to the terminal block. Use a screw (not included) to secure the cable to the terminal block cover.

NOTE: For distributed systems with additional loudspeakers, the second knot/loop can be removed.

3. Terminate the speaker wire to the terminal block.

INSERT PICTURE OF TERMINAL BLOCK

4. Replace the terminal block cover.

8.0 Test Summary			
Evaluation Period	04/10/2018 -12/10/2018		Project No. G103669881
Sample Rec. Date	10-Apr-2018	Condition Production	Sample ID. LAN1810090826-001
Test Location	25800 Commercenter Dr, Lake Forest, CA 92630		
Test Procedure	Testing Lab		
Determination of the result includes consideration of measurement uncertainty from the test equipment and methods. The product was tested as indicated below with results in conformance to the relevant test criteria.			
The following tests were performed:			
Test Description	UL 1480A:2016 Ed.1		
Input	21		
Component Temperature Test	22		
Abnormal Opertaion	23		
Jarring Test	24.1		
Impact	24.2		
Mounting/handle securement test	24.3		
Speaker grill test	24.4		
Dielectric Voltage-Withstand Test	29		
Speaker Burnout	27		
Evaluation Period	6/13/2019		Project No. G103971148LAX
Sample Rec. Date	10-Jun-2019	Condition Production	Sample ID. LAN1905231006-001
Test Location	25800 Commercenter Dr, Lake Forest, CA 92630		
Test Procedure	Testing Lab		
Determination of the result includes consideration of measurement uncertainty from the test equipment and methods. The product was tested as indicated below with results in conformance to the relevant test criteria.			
The following tests were performed:			
Test Description	UL 1480A:2016 Ed.1		
Dielectric Voltage-Withstand Test	29		
8.1 Signatures			
A representative sample of the product covered by this report has been evaluated and found to comply with the applicable requirements of the standards indicated in Section 1.0.			
Completed by:	Hristomir Guenov	Reviewed by:	Richard Dobberstein
Title:	Engineer	Title:	Technical Lead
Signature:	<i>Signature on file</i>	Signature:	<i>Signature on file</i>

9.0 Correlation Page For Multiple Listings

The following products, which are identical to those identified in this report except for model number and Listee name, are authorized to bear the ETL label under provisions of the Intertek Multiple Listing Program.

BASIC LISTEE	Crestron Electronics Inc
Address	15 Volvo Rockleigh, NJ 07647
Country	USA
Product	In-Ceiling Tile Loudspeaker

MULTIPLE LISTEE 1	None
Address	
Country	
Brand Name	
ASSOCIATED MANUFACTURER	
Address	
Country	
MULTIPLE LISTEE 1 MODELS	
BASIC LISTEE MODELS	

MULTIPLE LISTEE 2	None
Address	
Country	
Brand Name	
ASSOCIATED MANUFACTURER	
Address	
Country	
MULTIPLE LISTEE 2 MODELS	
BASIC LISTEE MODELS	

MULTIPLE LISTEE 3	None
Address	
Country	
Brand Name	
ASSOCIATED MANUFACTURER	
Address	
Country	
MULTIPLE LISTEE 3 MODELS	
BASIC LISTEE MODELS	

10.0 General Information

The Applicant and Manufacturer have agreed to produce, test and label ETL Listed products in accordance with the requirements of this Report. The Manufacturer has also agreed to notify Intertek and to request authorization prior to using alternate parts, components or materials.

COMPONENTS

Components used shall be those itemized in this Intertek report covering the product, including any amendments and/or revisions.

LISTING MARK

The ETL Listing mark applied to the products shall either be separable in form, such as labels purchased from Intertek, or on a product nameplate or other media only as specifically authorized by Intertek. Use of the mark is subject to the control of Intertek.

The mark must include the following four items:

- 1) applicable country identifiers "US" and/or "C" or "US", "C" and "EU"
- 2) the word "Listed" or "Classified" or "Recognized Component" (whichever is appropriate)
- 3) a control number issue by Intertek
- 4) a product descriptor that identifies the standards used for certification. Example:

For US standards, the words, "Conforms to" shall appear with the standard number along with the word, "Standard" or "Std." Example: "Conforms to ANSI/UL Std. XX."

For Canadian standards, the words "Certified to CAN/CSA Standard CXX No. XX." shall be used, or abbreviated, "Cert. to CAN/CSA Std. CXX No. XX."

Can be used together when both standards are used.

Note: A facsimile must be submitted to Intertek, Attn: Follow-up Services for approval prior to use.

The facsimile need not have a control number. A control number will be issued **after signed Certification Agreements** have been received by the Follow-up Services office, approval of the facsimile of your proposed Listing Mark, satisfactory completion of the Listing Report, and scheduling of a factory assessment in your facility.

MANUFACTURING AND PRODUCTION TESTS

Manufacturing and Production Tests shall be performed as required in this Report.

FOLLOW-UP SERVICE

Periodic unannounced audits of the manufacturing facility (and any locations authorized to apply the mark) shall be scheduled by Intertek. An audit report shall be issued after each visit. Special attention will be given to the following:

1. Conformance of the manufactured product to the descriptions in this Report.
2. Conformance of the use of the ETL mark with the requirements of this Report and the Certification Agreement.
3. Manufacturing changes.
4. Performance of specified Manufacturing and Production Tests.

In the event that the Intertek representative identifies non-conformance(s) to any provision of this Report, the Applicant shall take one or more of the following actions:

1. Correct the non-conformance.
2. Remove the ETL Mark from non-conforming product.
3. Contact the issuing product safety evaluation center for instructions.

10.1 Evaluation of Unlisted Components

Because Unlisted Components are uncontrolled, and they do not fall under a third party follow up program, Intertek may require these components to be tested and/or evaluated at least once annually, more often for certain components, as part of the independent certification process. The Unlisted Components in Section 5.0 require testing and/or evaluation as indicated.

Note to Intertek Follow Up Inspector: The Component Evaluation Center, CEC, will notify you in writing when these components must be selected and sent to the CEC for re-evaluation

Ship the samples to:

Intertek Testing Services NA Inc.
ETL Component Evaluation Center
45000 Helm Street, Suite 150
Plymouth Twp., MI 48170 USA
Attn: Component Evaluation Center



Sample Disposition: Due to the destructive nature of the testing, all samples will be discarded at the conclusion of testing unless, the manufacturer specifically requests the return of the samples. The request for return must accompany the initial component shipment.

11.0 Manufacturing and Production Tests

The manufacturer agrees to conduct the following Manufacturing and Production Tests as specified:

Required Tests

None

12.0 Revision Summary				
The following changes are in compliance with the declaration of Section 8.1:				
Date/ Proj # Site ID	Project Handler/ Reviewer	Section	Item	Description of Change
11-Jul-2019	H. Guenov R. Dobberstein	2	--	Changed Models From: "SAROS ICT5T-12-W-T-EACH" To: "SAROS ICT5T-12-W-T-EACH, SAROS ICT5T-22-W-T-EACH"
G103971148LAX		2	--	Change Model Similarities From: "NA" To: "Model SAROS ICT5T-22-W-T-EACH is identical to model SAROS ICT5T-12-W-T-EACH, except for the 2x2 construction of the baffle and grill. "
		3	1a, 2a	Added Photos 1a and 2a.
		3	3	Removed Photo 3 and added Photo 3a
		4	1	Updated the Technical Data From: "SPCC Refer to illustrations # 1" To: "SPCC Refer to illustrations # 1 and 1a"
		4	2	Updated the Technical Data From: "SPCC, black powder coated Refer to illustration # 2" To: "SPCC, black powder coated Refer to illustration # 2 and 2a"
		4	3	Updated the Technical Data From: "14-22AWG, 17.5Am 450V, V-2." To: "12-28AWG, 15A, 300V, V-0, 105°C."
		4	12	Added Rotary Switch component
		7	1a, 2a	Added Illustrations 1a and 2a
		7	5,6	Removed Illustrations 5 and 6 Added Illustrations 5a and 6a
		8	--	Added new test block
		8	1	Added new signatures
		21-Aug-2019	M. Yacoub 	3
			3b	Added Photo 3b
G103971148PRT	R. Dobberstein 	4	4	Updated Manufacturer From: Crestron To: Meiloon
			5	Updated Technical data From: 100UF/100V To: 1uF/100V